



GOLD AND COMPANY, LLC

WWW.GOLDCOMMERCIAL.NET

Commercial Real Estate in the Baltimore Metropolitan Area



1620 W. 41st St. Baltimore, MD 21211

Gold And Company, LLC

For More Information:

Jim Chivers
443.928.7522 cell
jim@goldcommercial.net

Gary Glover
443.629.2133 cell
gary@goldcommercial.net

Alex Simone
443.845.4413 cell
alex@goldcommercial.net

- **Industrial Site FOR SALE in Baltimore City**
- **1.7 Total Acres**
- **I-1 Zoning—Baltimore City Industrial**
- **Short Term Leases in Place**
- **Central Location in Baltimore City**
- **+/- 4,600 sf Buildings**
- **Drive-In Access**
- **Visibility from the JFX**
- **Contact us for More Information**

This property offering is subject to change without notice. All information is deemed reliable but not guaranteed.

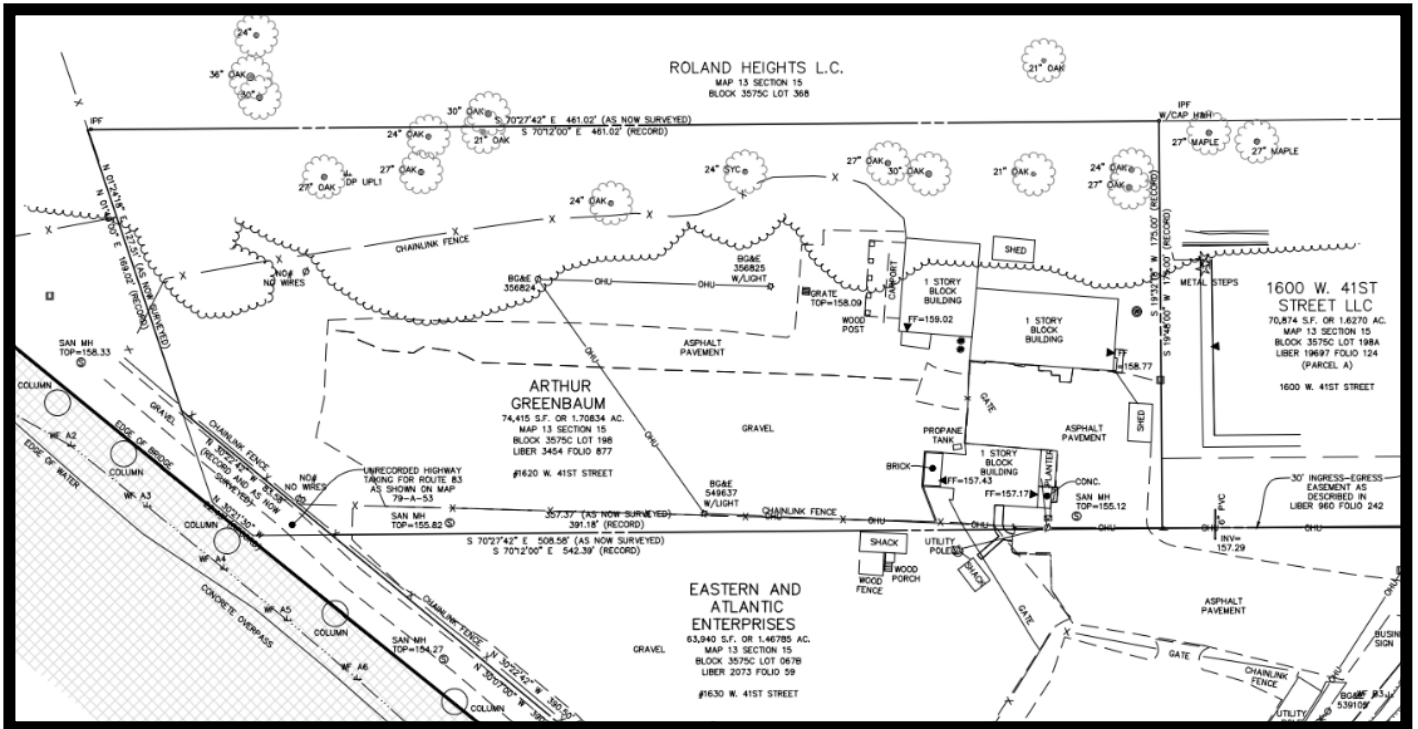


Gold And Company

Commercial Real Estate in the Baltimore Metropolitan Area

1620 W. 41st St. Baltimore, MD 21211

Property Survey



Jim Chivers / Gary Glover / Alex Simone
Gold And Company, LLC
5601 Newbury St. Baltimore, MD 21209
www.goldcommercial.net
410.578.1300



Gold And Company

Commercial Real Estate in the Baltimore Metropolitan Area

1620 W. 41st St. Baltimore, MD 21211

Map



Jim Chivers / Gary Glover / Alex Simone
Gold And Company, LLC
5601 Newbury St. Baltimore, MD 21209
www.goldcommercial.net
410.578.1300