



GOLD AND COMPANY, LLC

WWW.GOLDCOMMERCIAL.NET

Commercial Real Estate in the Baltimore Metropolitan Area



10940 Beaver Dam Rd. Hunt Valley, MD 21030

Gold And Company, LLC

**5601 Newbury St.
Baltimore, MD 21209**

For More Information:

**Jim Chivers
443.928.7522 cell
jim@goldcommercial.net**

www.goldcommercial.net

- **Freestanding Building Available FOR SALE / LEASE**
- **+/- 2,800 sf Building**
- **0.38 Acre / Paved Lot**
- **ML-IM Zoning—Baltimore County Light Industrial**
- **Private Offices w/ Open Bullpen Area**
- **+/- 12 Off Street Parking Spaces**
- **Easy Access to I-83**
- **Hunt Valley Route 83 Corridor**
- **Ideal For Contractors Office**
- **Contact For More Information**

This property offering is subject to change without notice. All information is deemed reliable but not guaranteed.

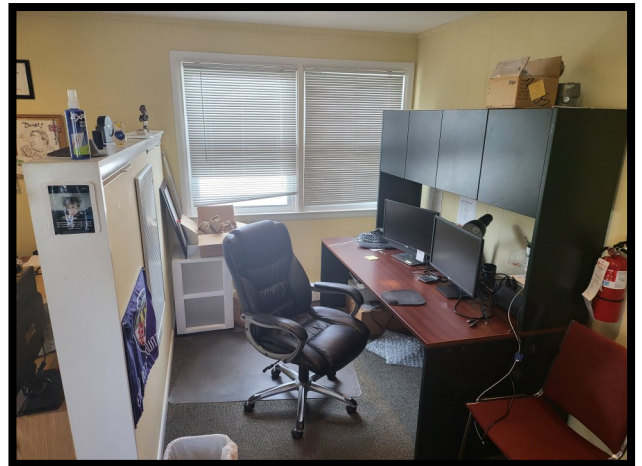


Gold And Company

Commercial Real Estate in the Baltimore Metropolitan Area

10940 Beaver Dam Rd. Hunt Valley, MD

Interior Pictures



Jim Chivers
Gold And Company, LLC
5601 Newbury St.
Baltimore, MD 21209

410.578.1300 (Office)

www.goldcommercial.net

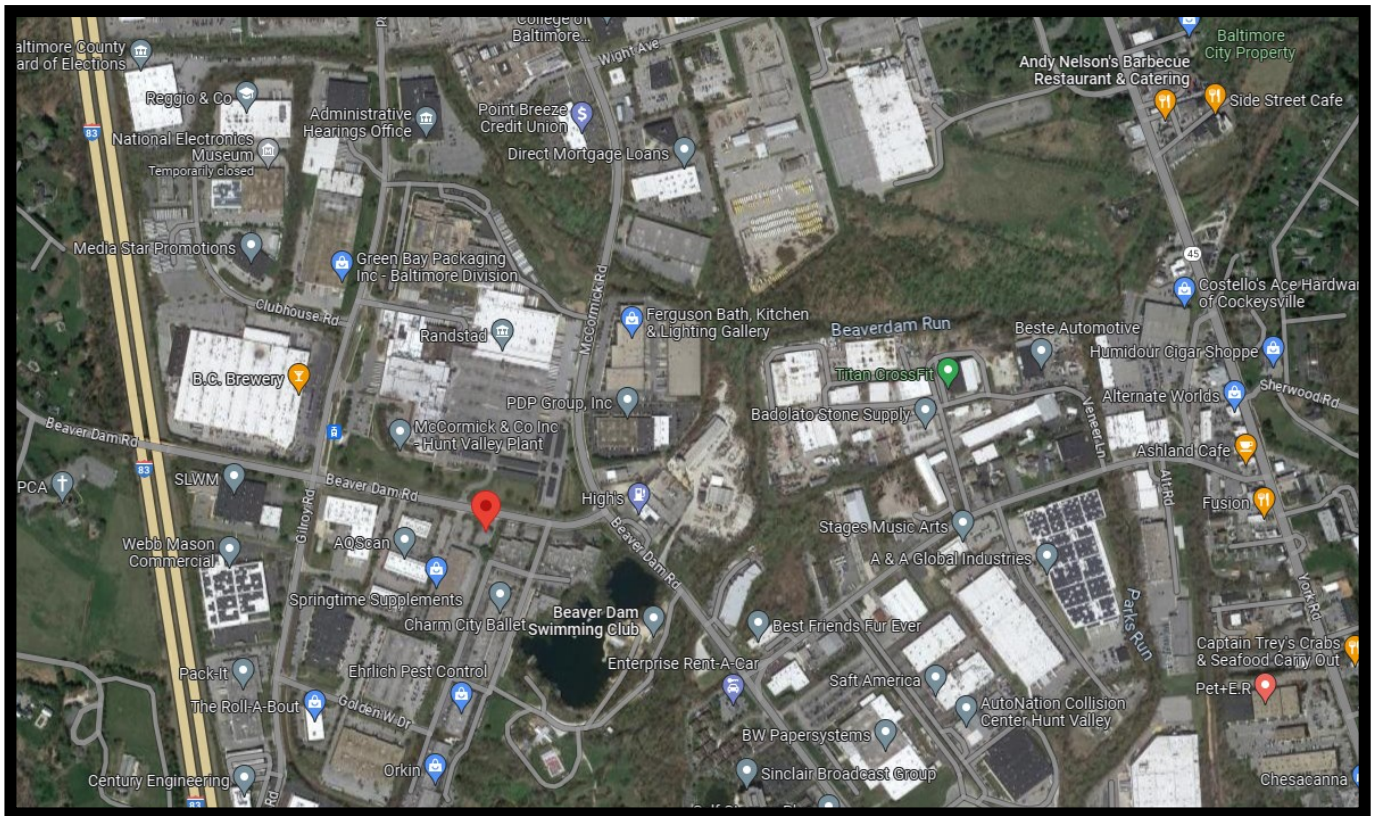


Gold And Company

Commercial Real Estate in the Baltimore Metropolitan Area

10940 Beaver Dam Rd. Hunt Valley, MD

Map



Jim Chivers
Gold And Company, LLC
5601 Newbury St.
Baltimore, MD 21209

410.578.1300 (Office)

www.goldcommercial.net