



GOLD AND COMPANY, LLC

WWW.GOLDCOMMERCIAL.NET

Commercial Real Estate in the Baltimore Metropolitan Area



5518 Harford Rd. Baltimore, MD 21214

Gold And Company, LLC

5601 Newbury St.
Baltimore, MD 21209

For More Information:

Jim Chivers
443.928.7522 cell
jim@goldcommercial.net

www.goldcommercial.net

- **Commercial Building Available FOR SALE**
- **+/- 11,100 Total Square Feet**
- **C-1 Zoning**
- **Leased by Lincare Holdings, Inc and Kim's Tailor**
- **92' Frontage on Harford Rd.**
- **The Heart of the Hamilton Neighborhood**
- **High Walkable and Public Transit Score**
- **Well Maintained**
- **Contact for Financials / Lease Information**

This property offering is subject to change without notice. All information is deemed reliable but not guaranteed.

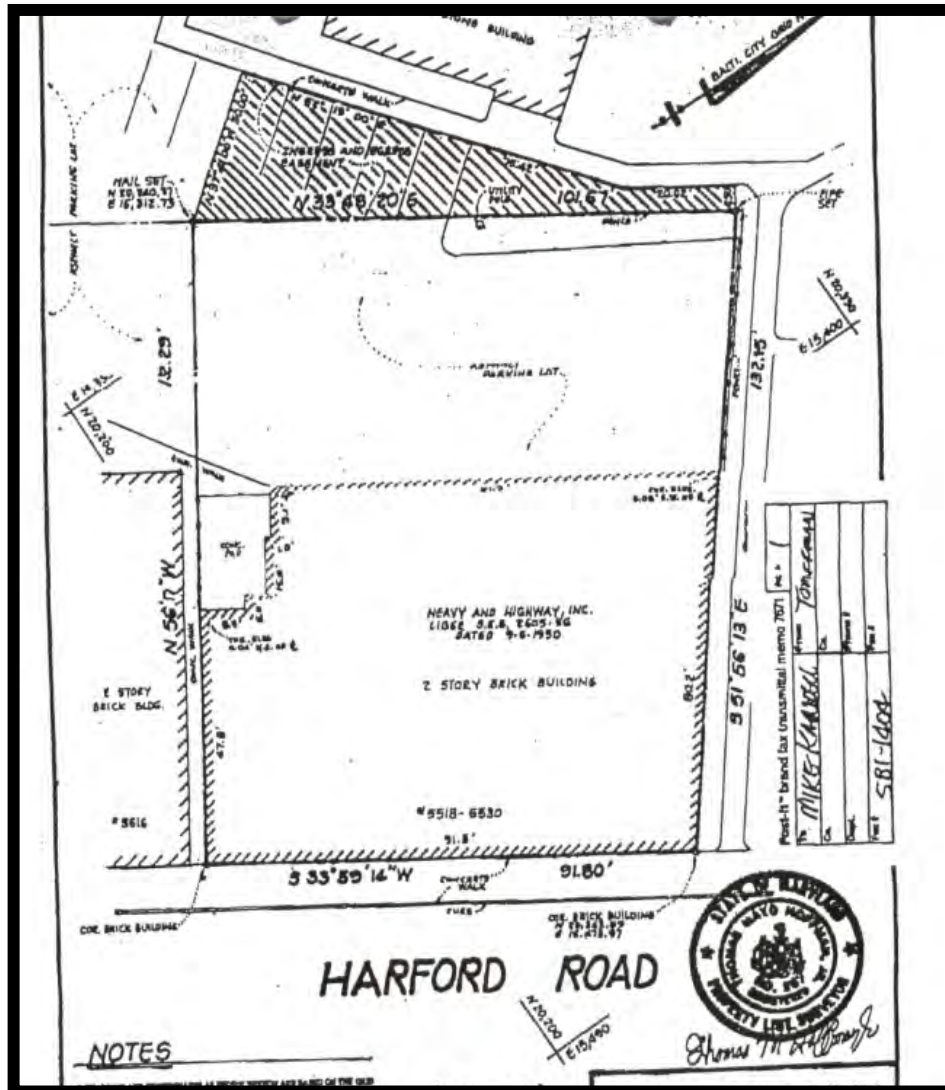


Gold And Company

Commercial Real Estate in the Baltimore Metropolitan Area

5518 Harford Rd. Baltimore, MD 21214

Property Survey



Jim Chivers
Gold And Company, LLC
5601 Newbury St.
Baltimore, MD 21209

410.578.1300 (Office)

www.goldcommercial.net

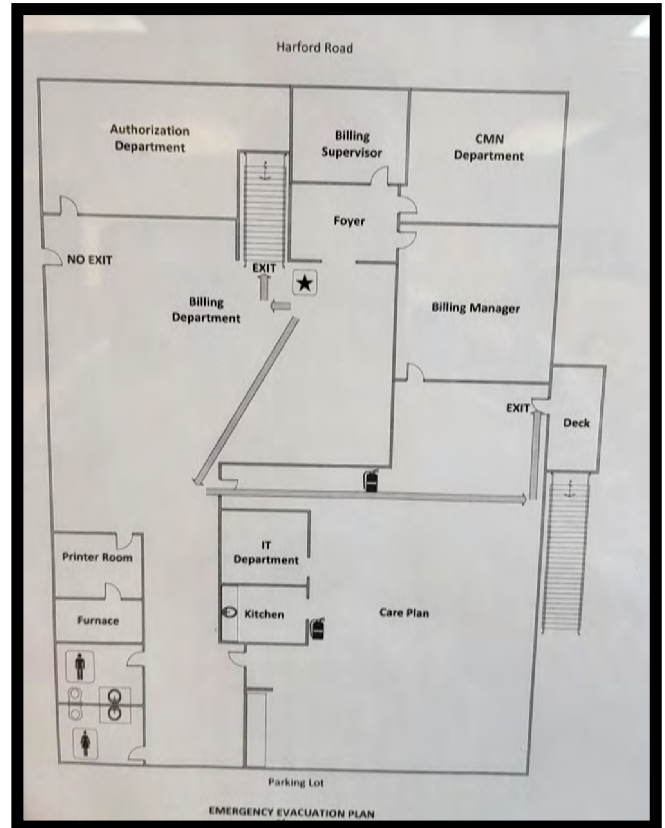
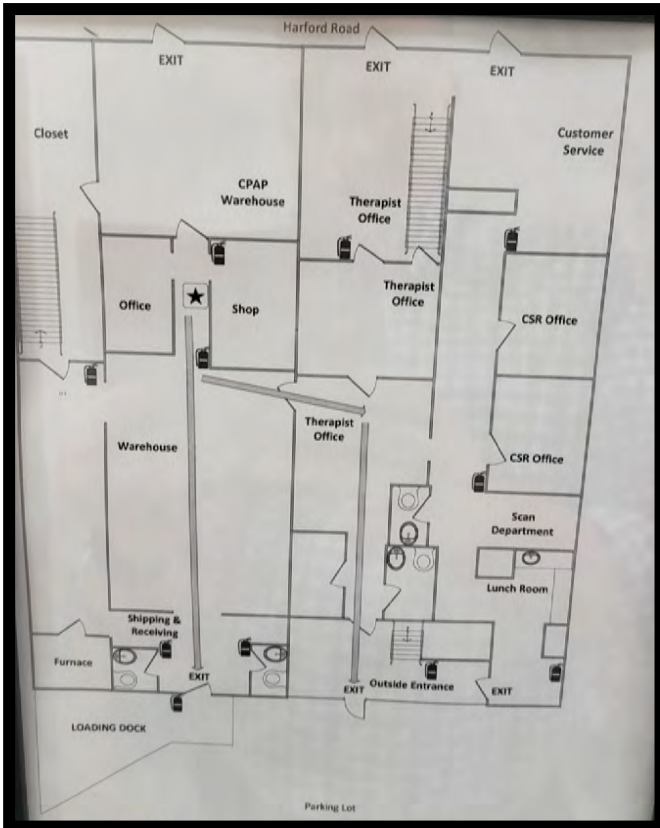


Gold And Company

Commercial Real Estate in the Baltimore Metropolitan Area

5518 Harford Rd. Baltimore, MD 21214

Floor Layouts



Jim Chivers
Gold And Company, LLC
5601 Newbury St.
Baltimore, MD 21209

410.578.1300 (Office)

www.goldcommercial.net



Gold And Company

Commercial Real Estate in the Baltimore Metropolitan Area

Additional Aerials



Jim Chivers

410.578.1300 (Office)

Gold And Company, LLC—Commercial Real Estate in the Baltimore Area