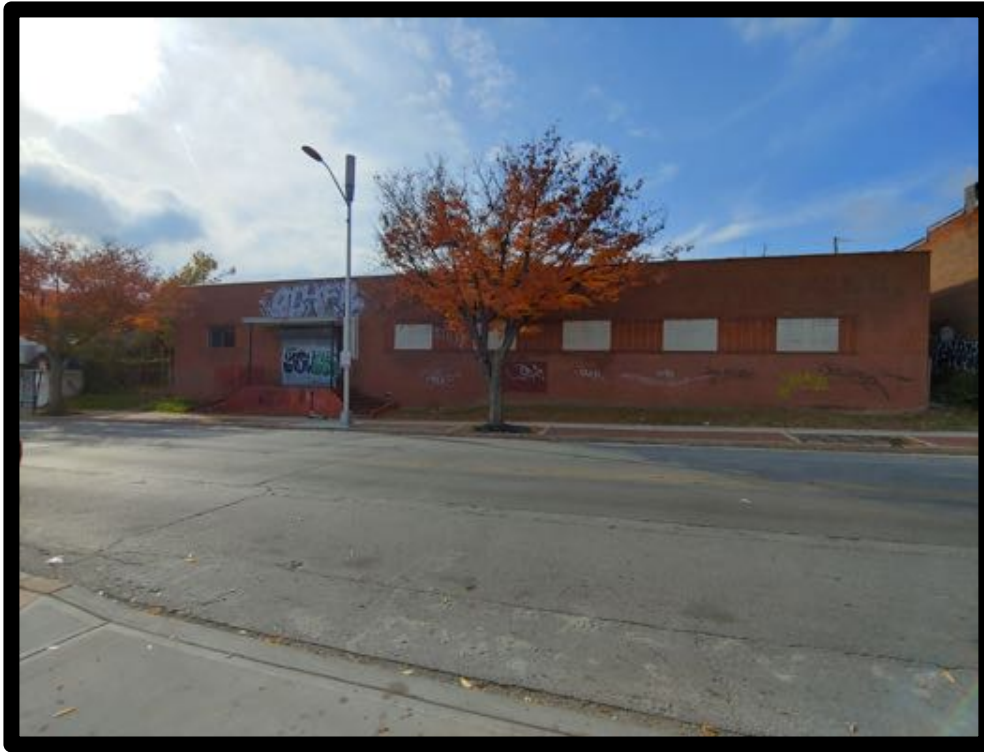




GOLD AND COMPANY, LLC



2920 Greenmount Avenue, Baltimore, MD 21218

Gold and Company, LLC

**5601 Newbury St.
Baltimore, MD 21209**

**Alex Simone
443.845.4413
Alex@goldcommercial.net**

**Mitch Gold
410.456.2492
Mitch@goldcommercial.net**

**Office: 410.578.1300
www.goldcommercial.net**

- **Warehouse FOR SALE**
- **Greenmount Ave and 29th St**
- **8,760 sf +/-**
- **C-1 zoning**
 - **Neighborhood Businesses**
- **Dock Loading**
- **Additional basement storage**
 - **With drive-in loading**
- **Fenced rear parking lot**
- **HUB Zone**
- **Enterprise Zone**



Gold and Company

Commercial Real Estate in the Baltimore Metropolitan Area

2920 Greenmount Avenue, Baltimore, MD 21218

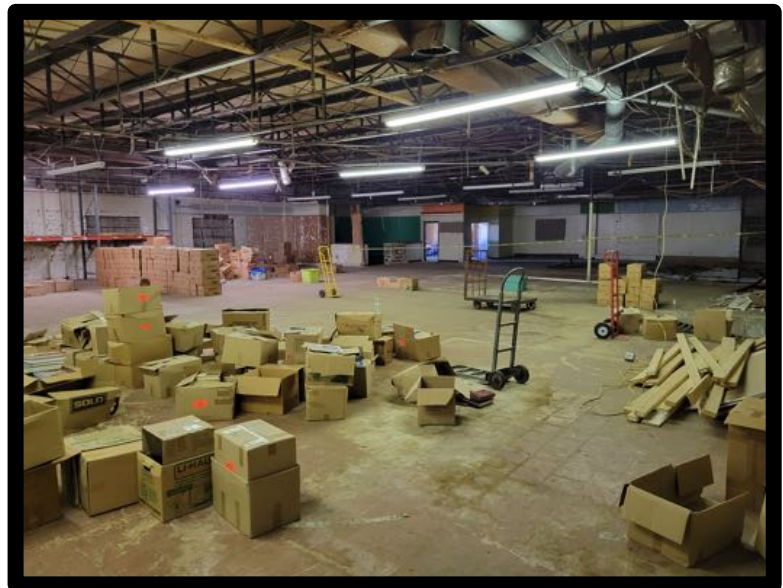


Ground Floor - Dock

Basement - Drive-in

12' clear height

14' ceilings



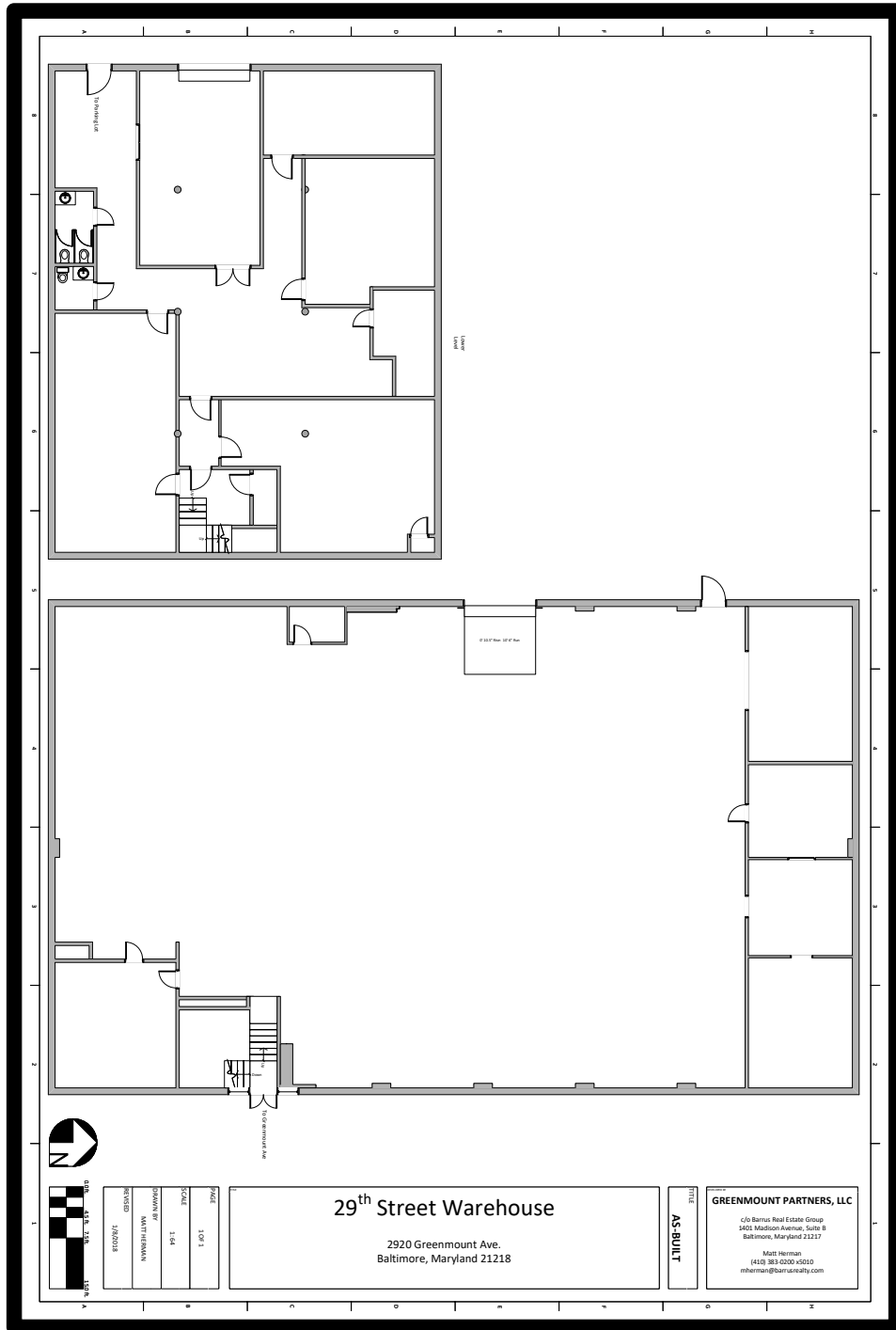
**Alex Simone / Mitch Gold
Gold and Company, LLC
5601 Newbury St.
Baltimore, MD 21209**

**410.578.1300
www.goldcommercial.net**



Gold and Company

Commercial Real Estate in the Baltimore Metropolitan Area



Alex Simone / Mitch Gold
Gold and Company, LLC
5601 Newbury St.
Baltimore, MD 21209

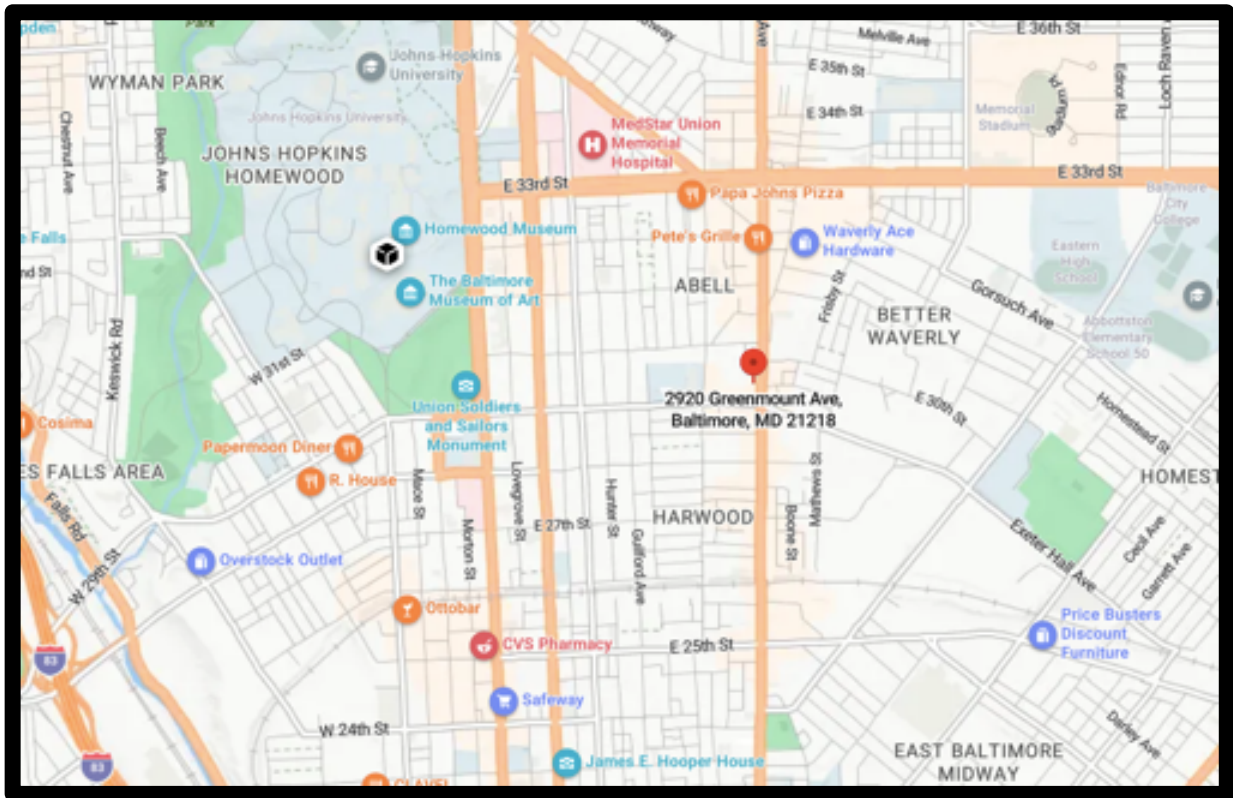
410.578.1300
www.goldcommercial.net



Gold and Company

Commercial Real Estate in the Baltimore Metropolitan Area

2920 Greenmount Avenue, Baltimore, MD 21218



Alex Simone / Mitch Gold
Gold and Company, LLC
5601 Newbury St.
Baltimore, MD 21209

410.578.1300
www.goldcommercial.net