



# GOLD AND COMPANY, LLC

[WWW.GOLDCOMMERCIAL.NET](http://WWW.GOLDCOMMERCIAL.NET)

*Commercial Real Estate in the Baltimore Metropolitan Area*



**9813 Philadelphia Rd. Baltimore, MD 21237**

## Gold And Company, LLC

5601 Newbury St.  
Baltimore, MD 21209

*For More Information:*

Jim Chivers  
443.928.7522 cell  
[jim@goldcommercial.net](mailto:jim@goldcommercial.net)

[www.goldcommercial.net](http://www.goldcommercial.net)

- **INDUSTRIAL PROPERTY FOR SALE**
- **Fully Leased**
- **Tenant: CarMax Superstores, Inc.**
- **+/- 20 Acres**
- **+/- 15,000 sf Drive-In Buildings**
- **ML-IM Zoning—Baltimore County**
- **Lease Type: NNN**
- **Yearly Rent Increases**
- **Contact for Financials / More Information**

This property offering is subject to change without notice. All information is deemed reliable but not guaranteed.

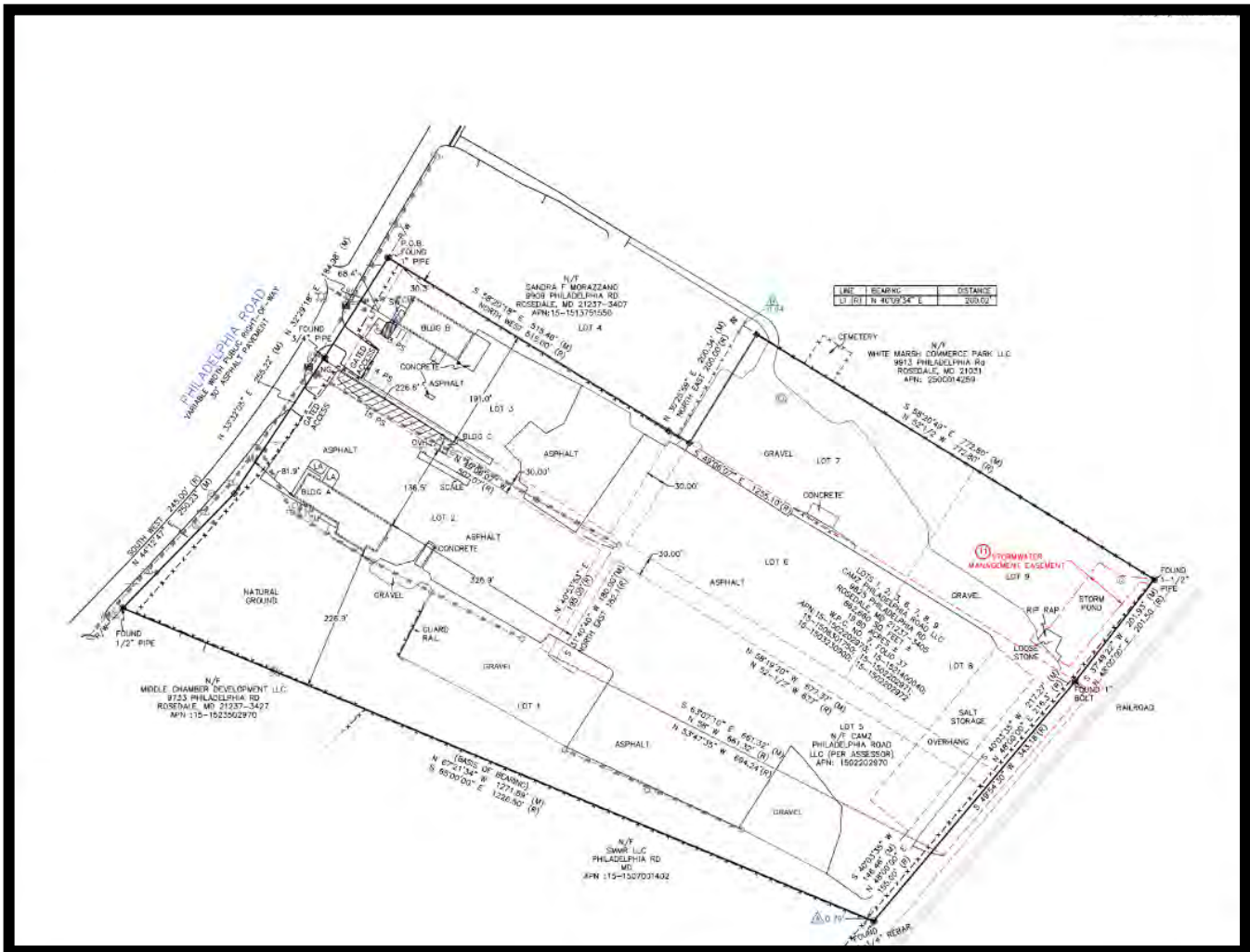


# Gold And Company

Commercial Real Estate in the Baltimore Metropolitan Area

## 9813 Philadelphia Rd. Baltimore, MD

### Property Survey



**Jim Chivers**  
**Gold And Company, LLC**  
**5601 Newbury St.**  
**Baltimore, MD 21209**

**410.578.1300 (Office)**  
**www.goldcommercial.net**



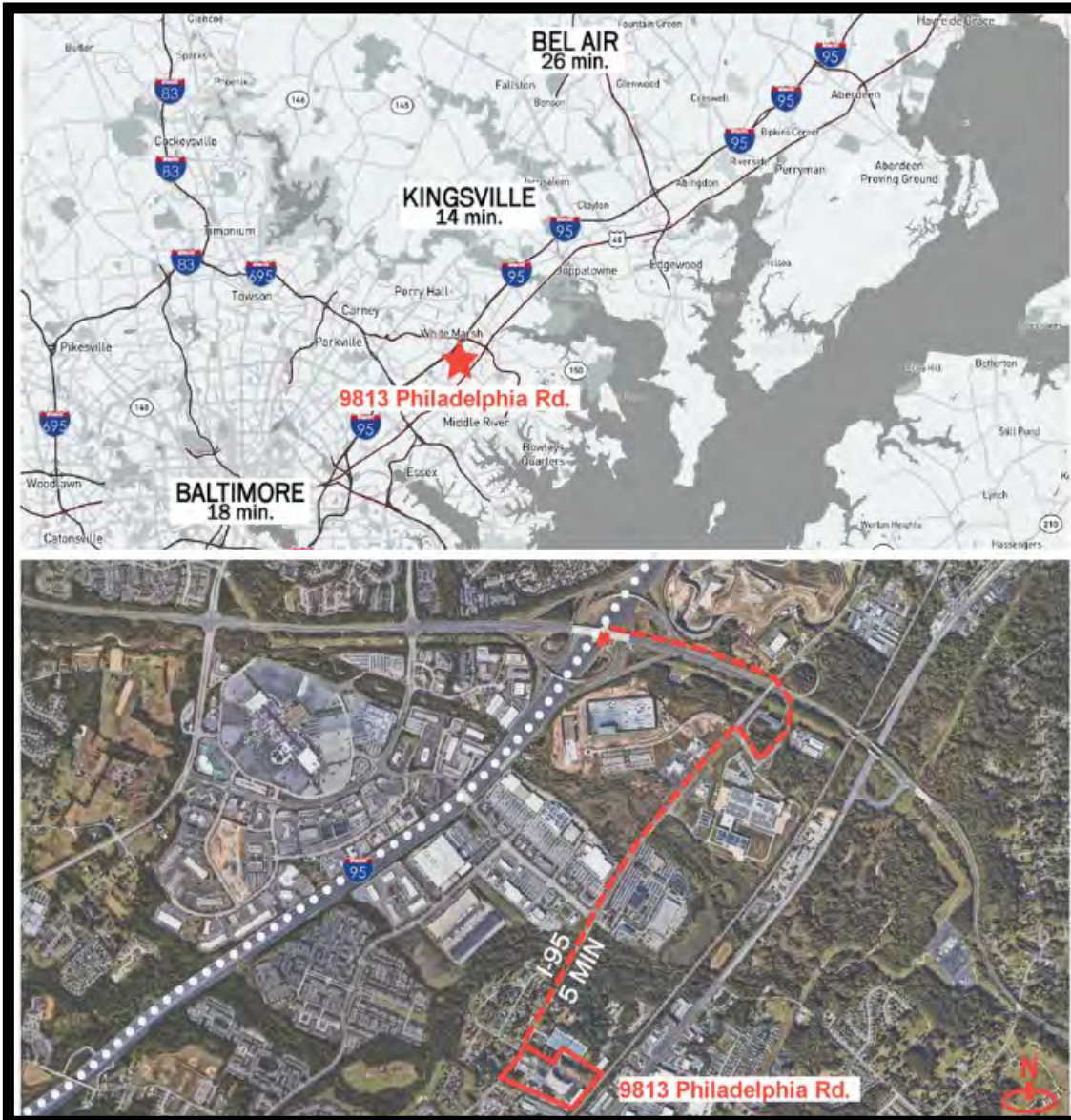


# **Gold And Company**

**Commercial Real Estate in the Baltimore Metropolitan Area**

## **9813 Philadelphia Rd. Baltimore, MD**

### **Map**



**Jim Chivers**  
**Gold And Company, LLC**  
**5601 Newbury St.**  
**Baltimore, MD 21209**

**410.578.1300 (Office)**

**[www.goldcommercial.net](http://www.goldcommercial.net)**