



# **GOLD AND COMPANY, LLC**

**WWW.GOLDCOMMERCIAL.NET**

***Commercial Real Estate in the Baltimore Metropolitan Area***



## **1900 Frankfurst Ave. Baltimore, MD 21226**

### **Gold And Company, LLC**

**5601 Newbury St.  
Baltimore, MD 21209**

***For More Information:***

**Jim Chivers  
443.928.7522 cell  
jim@goldcommercial.net**

**[www.goldcommercial.net](http://www.goldcommercial.net)**

- **Fairfield Marine Terminal Property FOR SALE**
- **+/- 13.2 acres**
- **+/- 73,000 sf Total Building in Two Structures**
- **+/- 50,000 sf Crane Served Building w/+/- 36' Clear Height**
- **Minimum 25' x 25' Drive-In Doors**
- **Fenced, Lit, and Paved**
- **MI Zoning—Maritime Industrial**
- **South Baltimore City**
- **Short Term Lease in Place**
- **Contact For More Information**





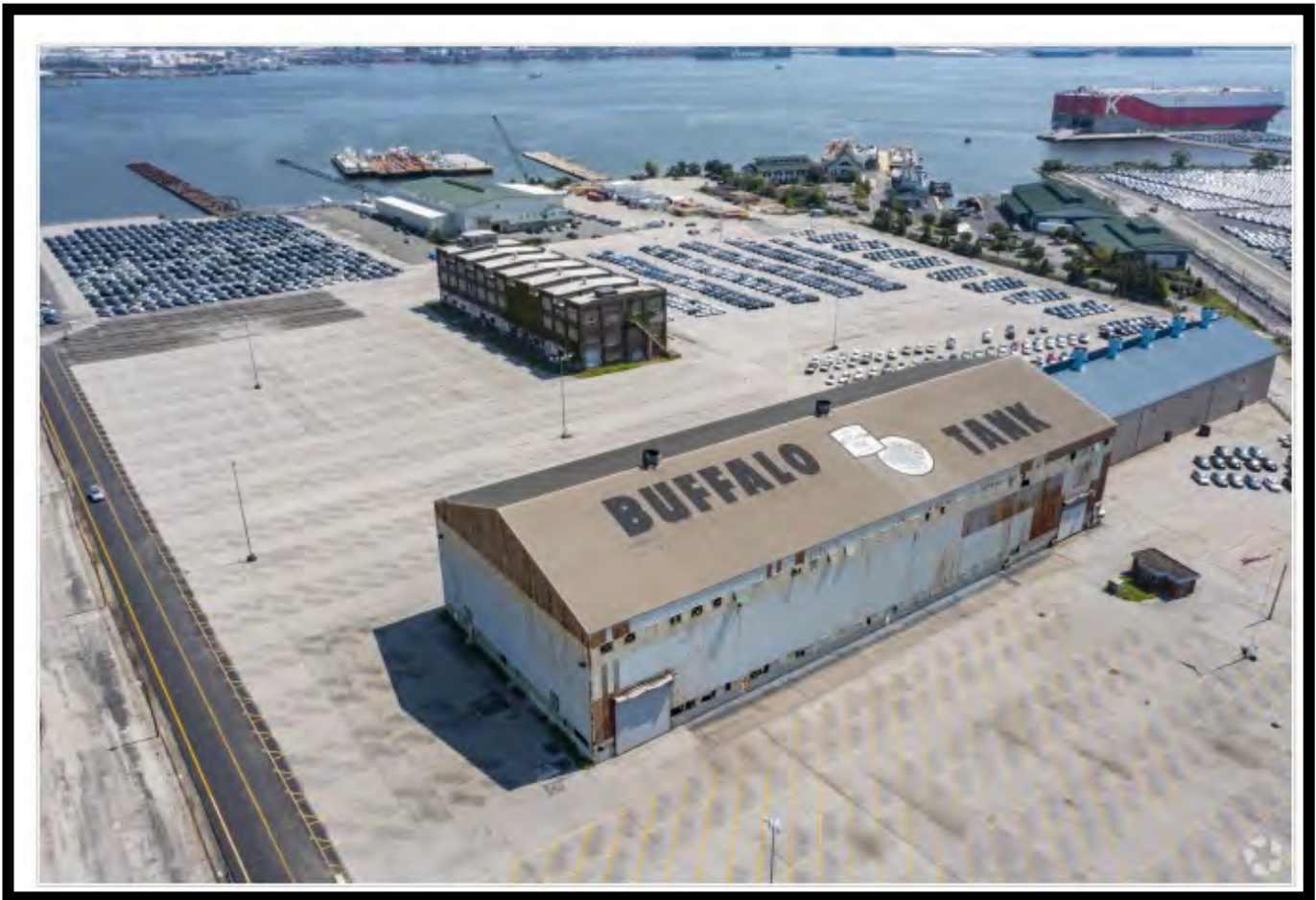


# ***Gold And Company***

***Commercial Real Estate in the Baltimore Metropolitan Area***

**1900 Frankfurst Ave. Baltimore, MD 21226**

## **Birds Eye View**



**Jim Chivers  
Gold And Company, LLC  
5601 Newbury St.  
Baltimore, MD 21209**

**410.578.1300 (Office)**

**[www.goldcommercial.net](http://www.goldcommercial.net)**



# **Gold And Company**

**Commercial Real Estate in the Baltimore Metropolitan Area**

**1900 Frankfurst Ave. Baltimore, MD 21226**

## **Map**



**Jim Chivers**  
**Gold And Company, LLC**  
**5601 Newbury St.**  
**Baltimore, MD 21209**

**410.578.1300 (Office)**

**[www.goldcommercial.net](http://www.goldcommercial.net)**