



GOLD AND COMPANY, LLC

WWW.GOLDCOMMERCIAL.NET

Commercial Real Estate in the Baltimore Metropolitan Area



3501 Sinclair Ln., Baltimore, MD 21213

Gold And Company, LLC

5601 Newbury St.
Baltimore, MD 21209

For More Information:

Jim Chivers
443.928.7522 cell
jim@goldcommercial.net

Alex Simone
443.845.4413
alex@goldcommercial.net

www.goldcommercial.net

- Available FOR SALE / LEASE
- Freestanding 3 Story Building
- +/- 19,500 SF Building
- 1.23 Acres
- I-2—Heavy Industrial Zoning
- East Baltimore City Industrial Submarket
- Rear Drive-In Loading Door
- Office / Laboratory Build-Out
- Outside Storage Area / 60+ Parking Spaces
- Call For More Information

This property offering is subject to change without notice. All information is deemed reliable but not guaranteed.

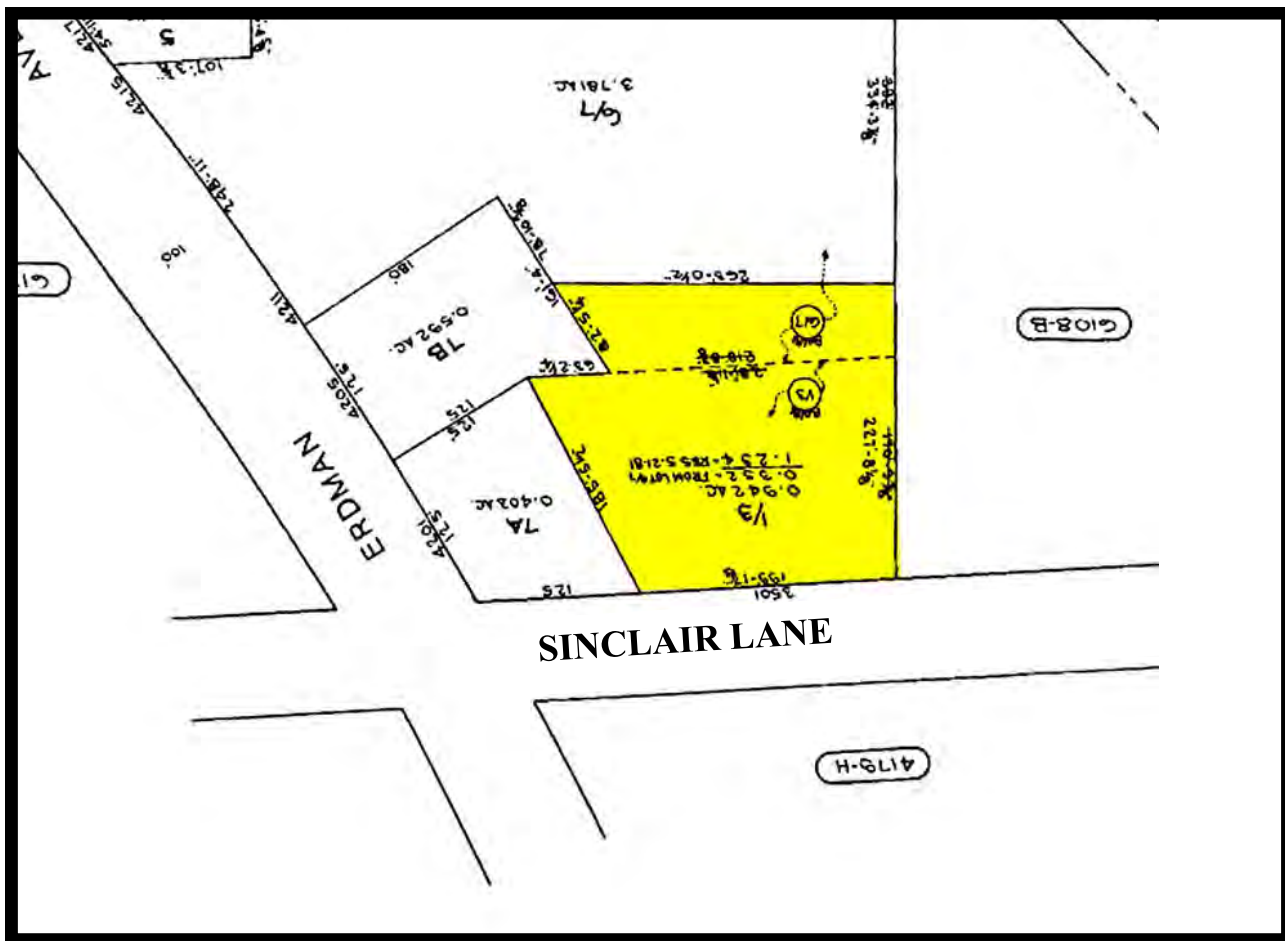


Gold And Company

Commercial Real Estate in the Baltimore Metropolitan Area

3501 Sinclair Ln., Baltimore, MD 21213

Block Map



Jim Chivers / Alex Simone
Gold And Company, LLC
5601 Newbury St.
Baltimore, MD 21209

410.578.1300 (Office)

www.goldcommercial.net

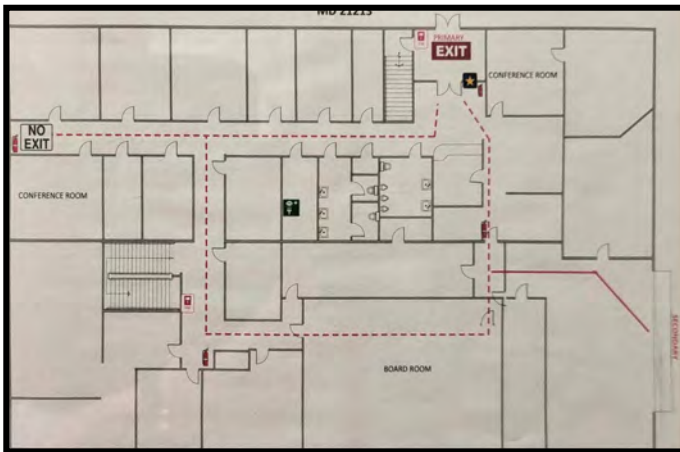


Gold And Company

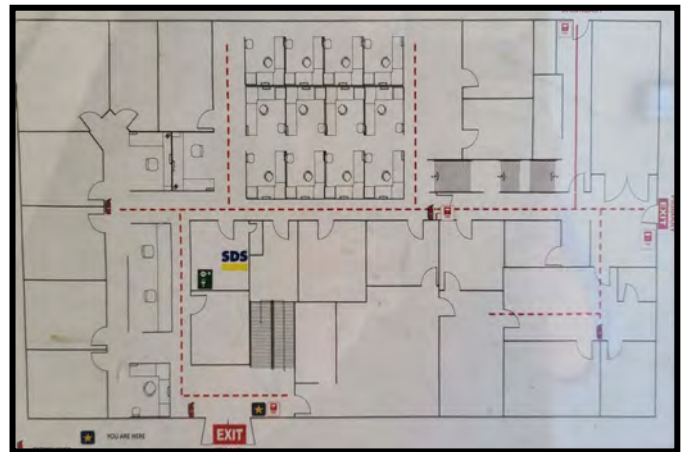
Commercial Real Estate in the Baltimore Metropolitan Area

3501 Sinclair Ln., Baltimore, MD 21213

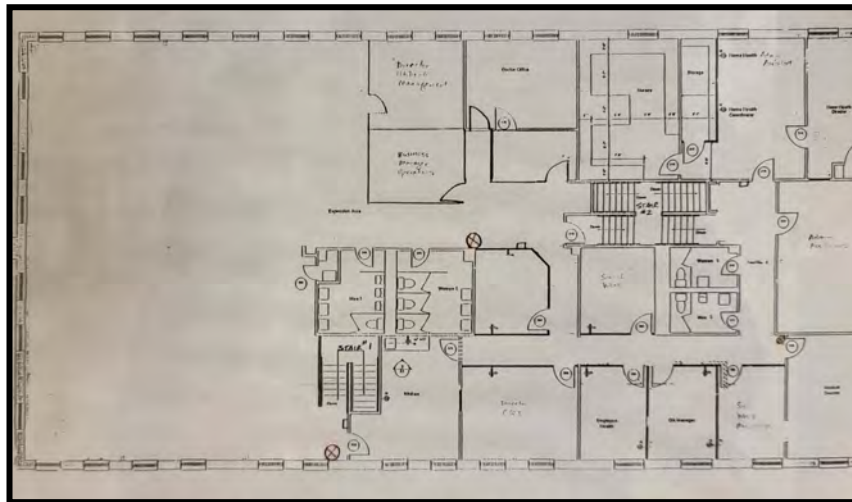
Floor Layouts



1st Level



2nd Level



3rd Level

Jim Chivers / Alex Simone
Gold And Company, LLC
5601 Newbury St.
Baltimore, MD 21209

410.578.1300 (Office)

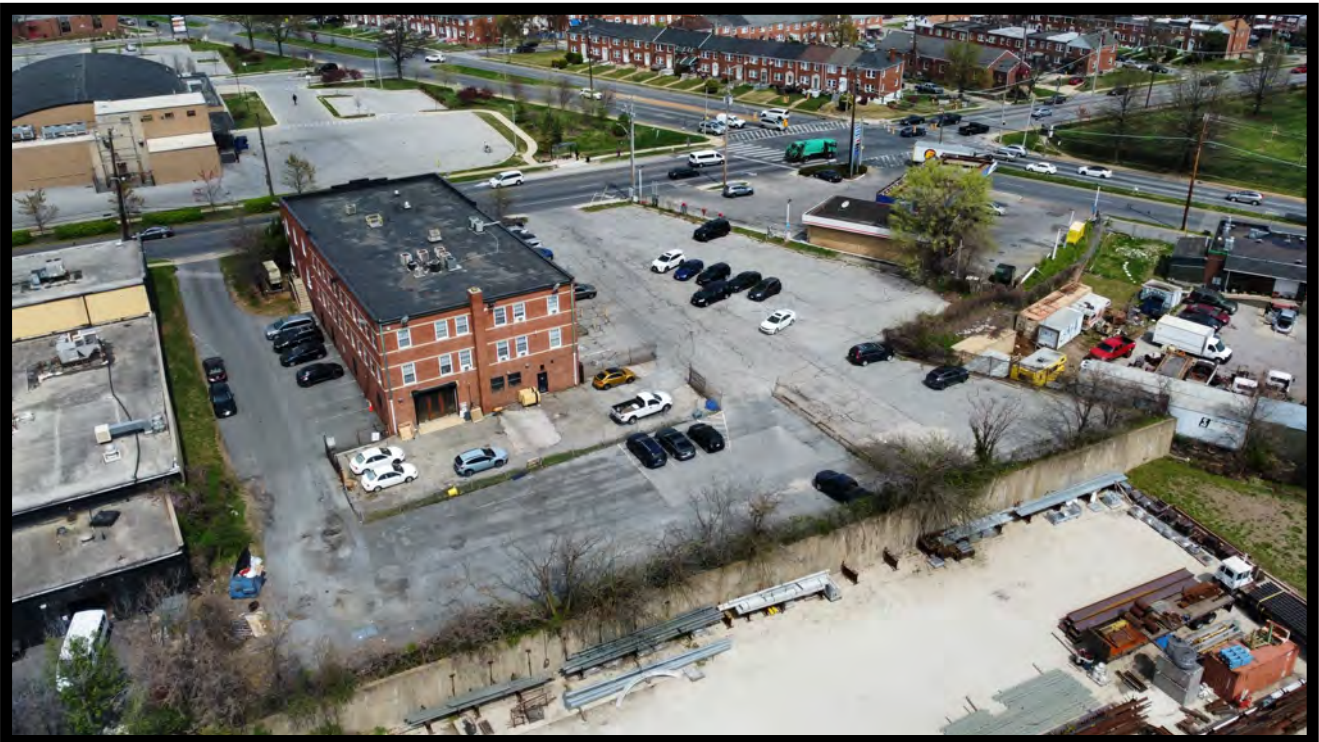
www.goldcommercial.net



Gold And Company

Commercial Real Estate in the Baltimore Metropolitan Area

Additional Aerials



Jim Chivers / Alex Simone

410.578.1300 (Office)

Gold And Company, LLC—Commercial Real Estate in the Baltimore Area