



GOLD AND COMPANY, LLC

WWW.GOLDCOMMERCIAL.NET

Commercial Real Estate in the Baltimore Metropolitan Area



800 Debelius Ave. Baltimore, MD 21205

Gold And Company, LLC

**5601 Newbury St.
Baltimore, MD 21209**

**Jim Chivers
443.928.7522 cell
jim@goldcommercial.net**

www.goldcommercial.net

- **Flex Building Available FOR LEASE**
- **+/- 19,000 SF Building**
- **Completely Renovated**
- **I-2—Heavy Industrial Zoning**
- **East Baltimore City Industrial Submarket**
- **Drive-In and Dock Loading Platform**
- **Some Outside Parking / Storage Area**
- **Heavy Power**
- **+/- 18' Ceiling Height**
- **Call For More Information**

This property offering is subject to change without notice. All information is deemed reliable but not guaranteed.

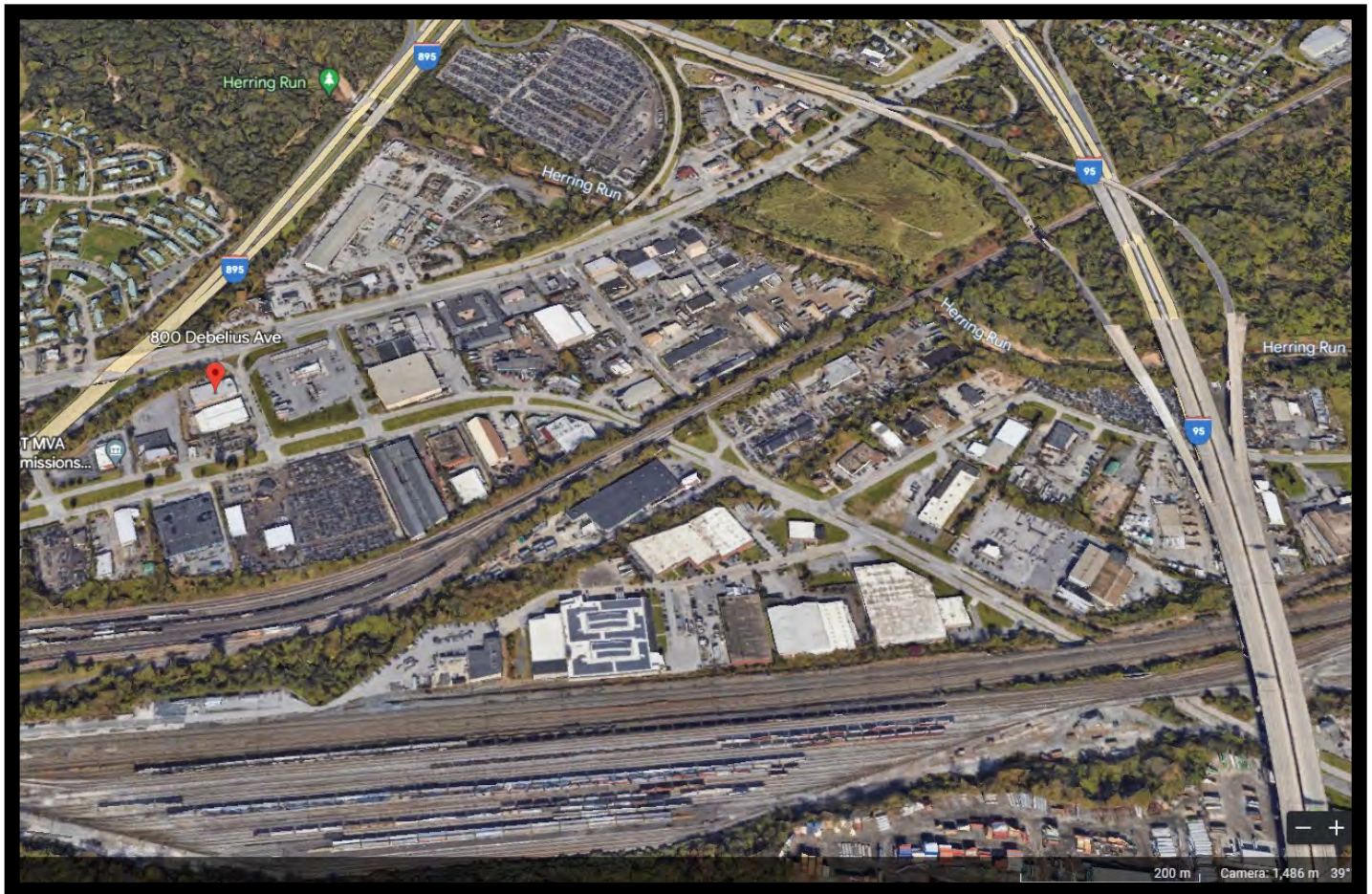


Gold And Company

Commercial Real Estate in the Baltimore Metropolitan Area

800 Debelius Ave. Baltimore, MD 21205

MAP



Jim Chivers
Gold And Company, LLC
5601 Newbury St.
Baltimore, MD 21209

410.578.1300 (Office)

www.goldcommercial.net