



GOLD AND COMPANY, LLC

WWW.GOLDCOMMERCIAL.NET

Commercial Real Estate in the Baltimore Metropolitan Area



7518-7526 Harford Rd. Baltimore, MD 21234

Gold And Company, LLC

**5601 Newbury St.
Baltimore, MD 21209**

**Jim Chivers
443.928.7522 cell
jim@goldcommercial.net**

www.goldcommercial.net

- **Office Building Available FOR SALE / LEASE**
- **+/- 10,000 sf Building**
- **Partitioned Offices w/ Open Bullpen Area**
- **Kitchen Area / Break Room**
- **3 Stories**
- **R-O Zoning—Baltimore City**
- **Warehouse / Drive-In For Additional Storage**
- **Off Street Parking Available**
- **Located 5 Mins from 695 / Easy Access to City**
- **CALL FOR MORE INFORMATION**

This property offering is subject to change without notice. All information is deemed reliable but not guaranteed.



Gold And Company

Commercial Real Estate in the Baltimore Metropolitan Area

7518-7526 Harford Rd. Baltimore, MD

Interior Pictures



Jim Chivers
Gold And Company, LLC

410.578.1300 (Office)
jim@goldcommercial.net

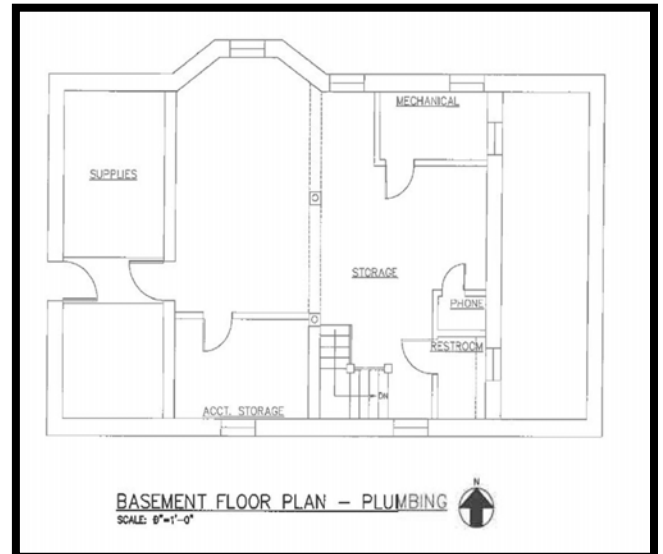
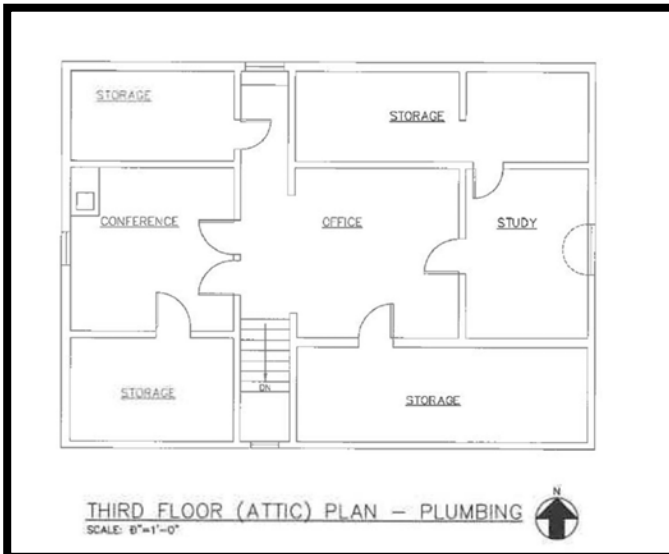
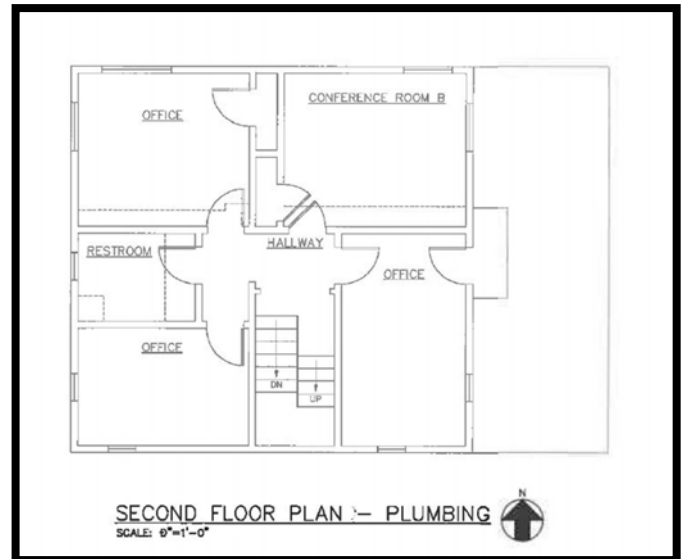
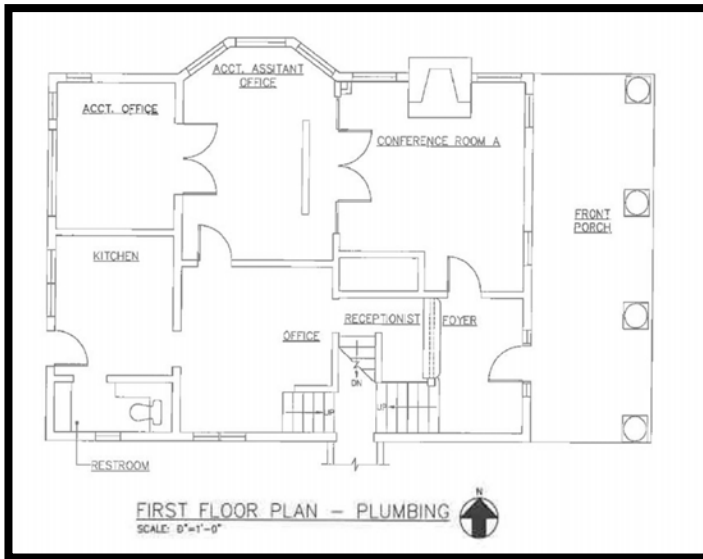


Gold And Company

Commercial Real Estate in the Baltimore Metropolitan Area

7518-7526 Harford Rd. Baltimore, MD

Floor Layout



Jim Chivers
Gold And Company, LLC

410.578.1300 (Office)
jim@goldcommercial.net

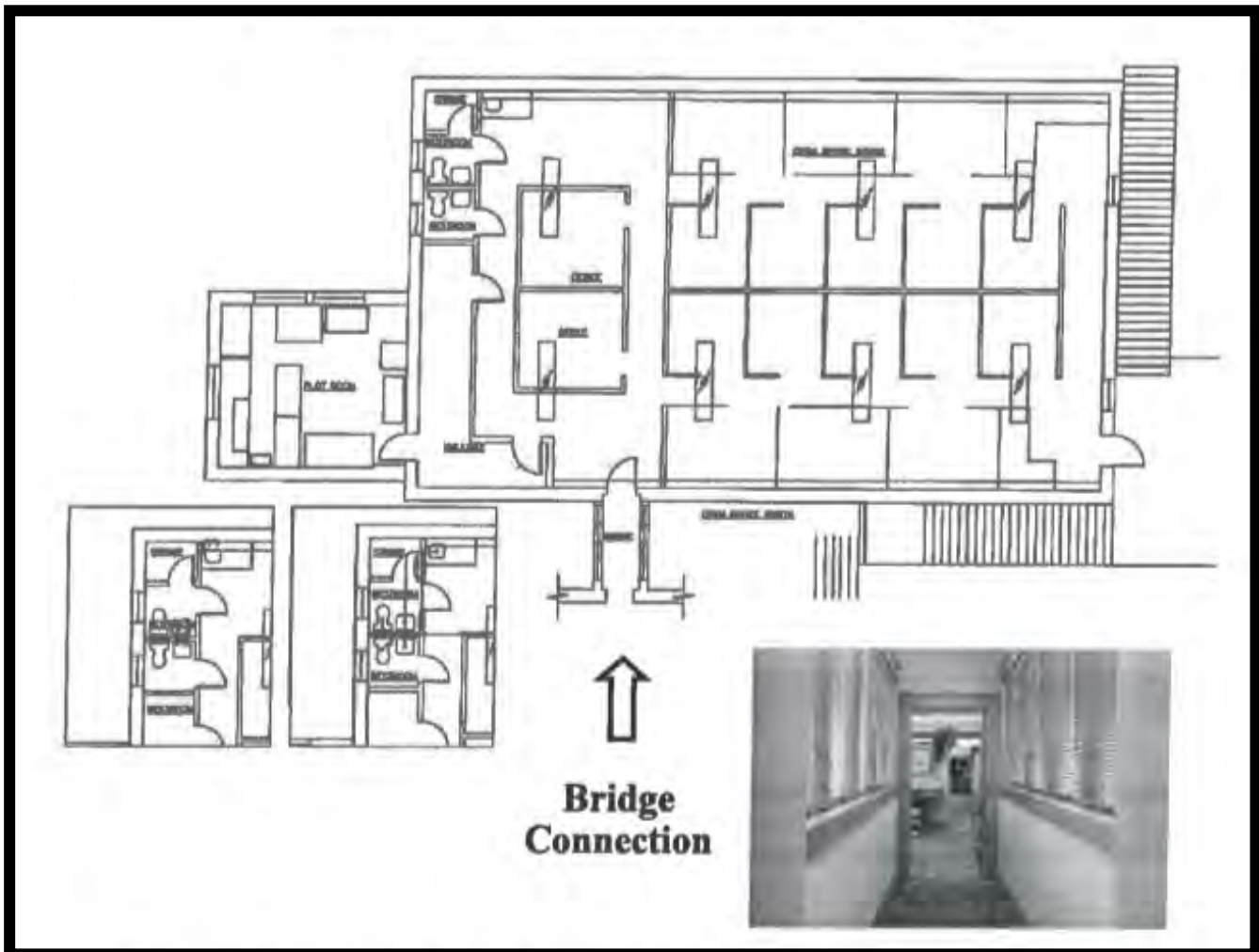


Gold And Company

Commercial Real Estate in the Baltimore Metropolitan Area

7518-7526 Harford Rd. Baltimore, MD

Open Bullpen Layout 2nd Floor



Jim Chivers
Gold And Company, LLC

410.578.1300 (Office)
jim@goldcommercial.net

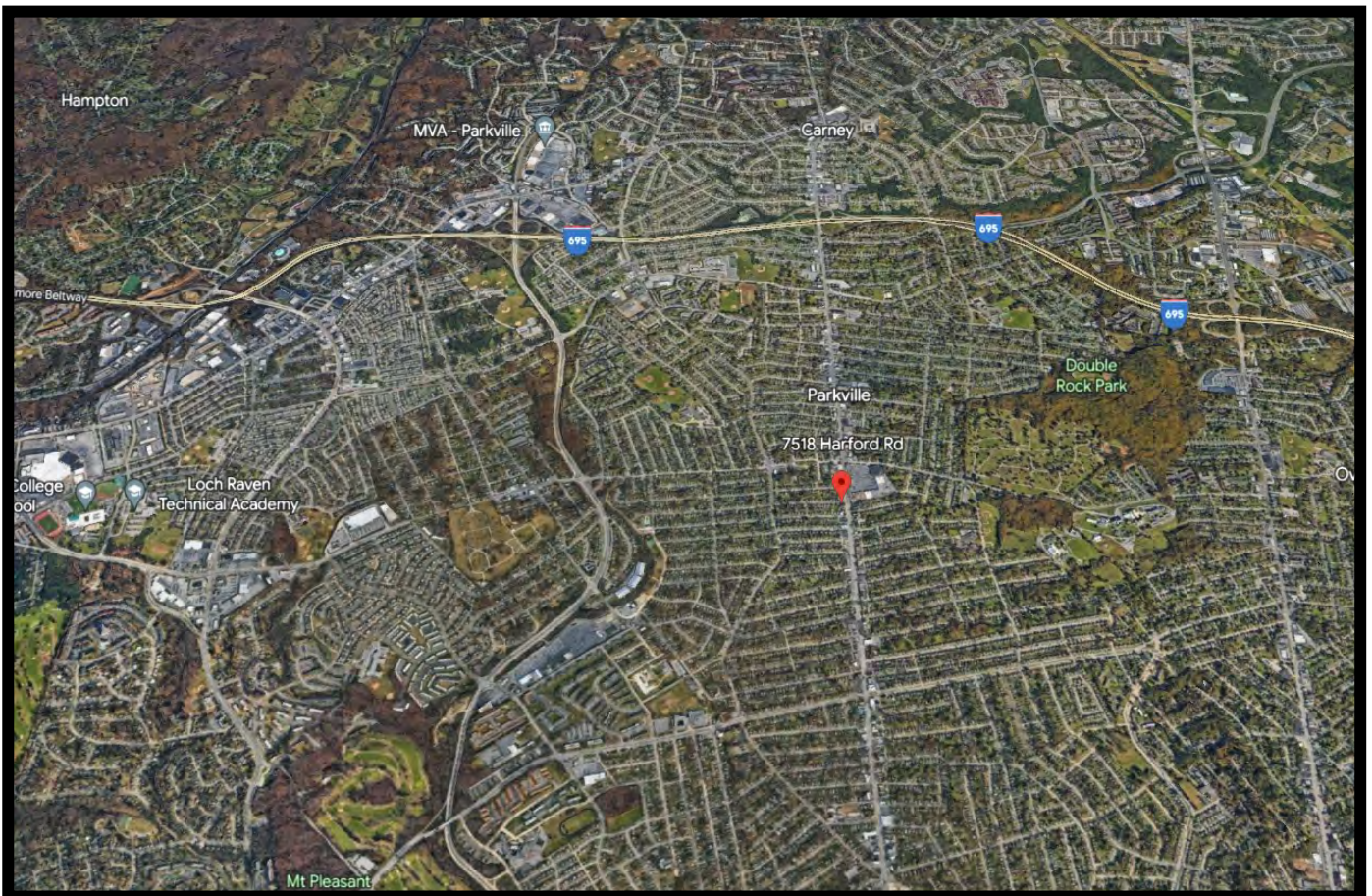


Gold And Company

Commercial Real Estate in the Baltimore Metropolitan Area

7518-7526 Harford Rd. Baltimore, MD

MAP



Jim Chivers
Gold And Company, LLC
5601 Newbury St.
Baltimore, MD 21209

410.578.1300 (Office)

www.goldcommercial.net