



GOLD AND COMPANY, LLC

WWW.GOLDCOMMERCIAL.NET

Commercial Real Estate in the Baltimore Metropolitan Area



6624 Quad Ave. Baltimore, MD 21237

Gold And Company, LLC

**5601 Newbury St.
Baltimore, MD 21209**

**Jim Chivers
443.928.7522 cell
jim@goldcommercial.net**

www.goldcommercial.net

- **Industrial Buildings Available FOR SALE**
- **+/- 15,000 sf in Two Buildings**
- **I-2—Heavy Industrial Zoning**
- **East Baltimore City Industrial Submarket**
- **0.991 Acres**
- **Drive-In and Dock Loading Platform**
- **Ideal for Owner-User or Redevelopment**
- **Rough Shell Condition**
- **Call For More Information**

This property offering is subject to change without notice. All information is deemed reliable but not guaranteed.

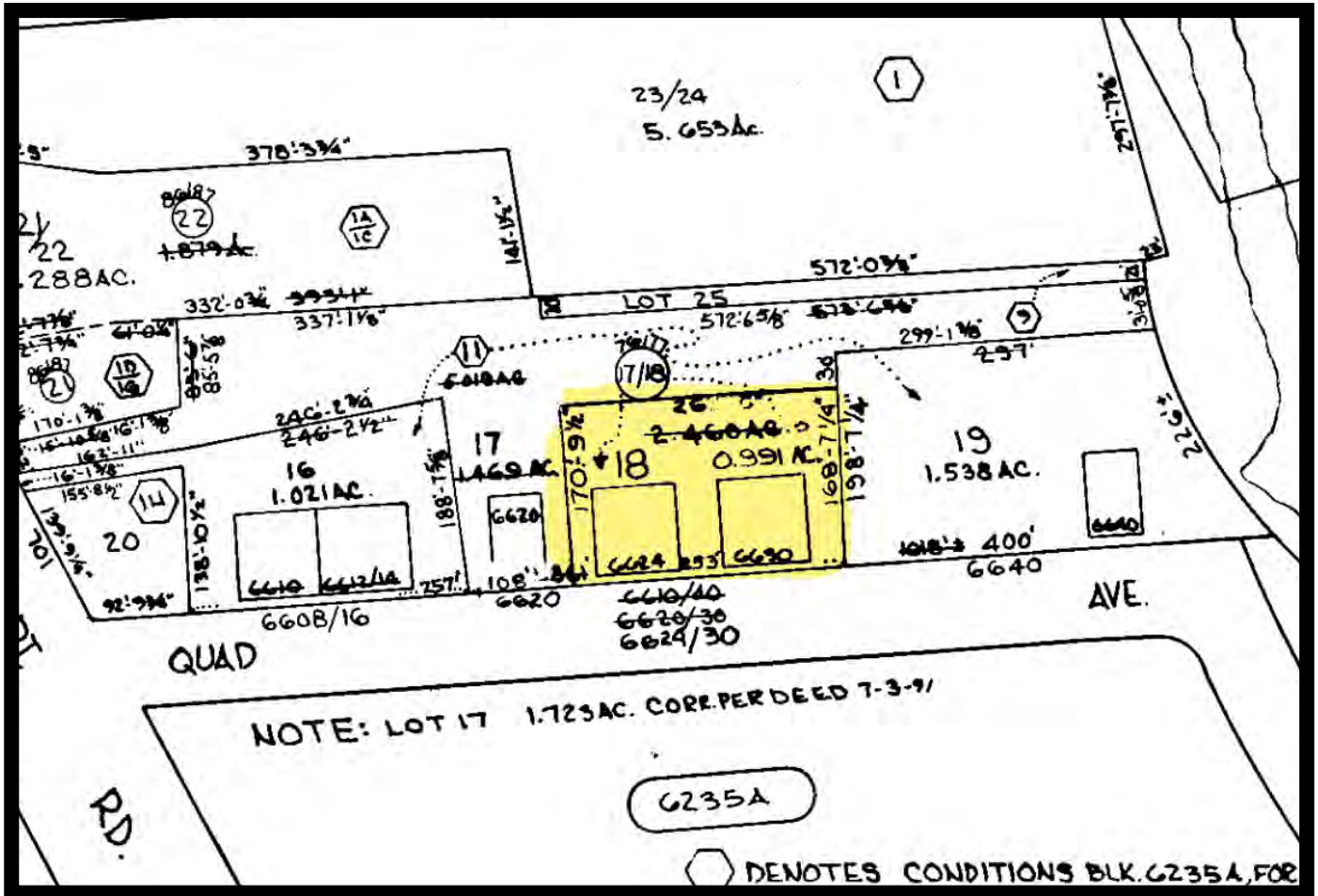


Gold And Company

Commercial Real Estate in the Baltimore Metropolitan Area

6624 Quad Ave. Baltimore, MD 21237

Block Map



Jim Chivers
Gold And Company, LLC
5601 Newbury St.
Baltimore, MD 21209

410.578.1300 (Office)

www.goldcommercial.net

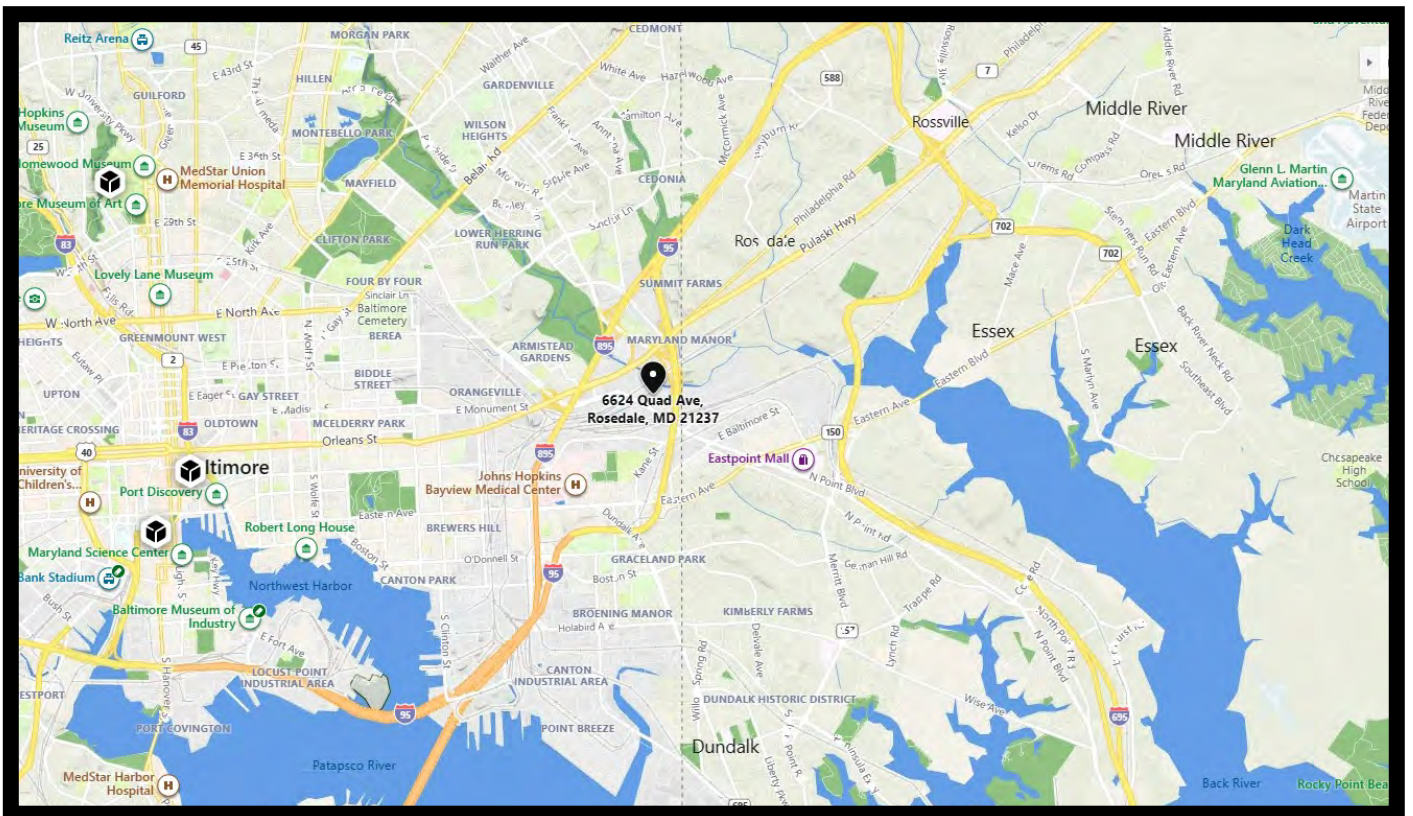


Gold And Company

Commercial Real Estate in the Baltimore Metropolitan Area

6624 Quad Ave. Baltimore, MD 21237

MAP



Jim Chivers
Gold And Company, LLC
5601 Newbury St.
Baltimore, MD 21209

410.578.1300 (Office)

www.goldcommercial.net