



GOLD AND COMPANY, LLC



629 West 36th Street, Baltimore, Maryland 21211

Gold and Company, LLC

**5601 Newbury St.
Baltimore, MD 21209**

Alex Simone
443.845.4413
[**Alex@goldcommercial.net**](mailto:Alex@goldcommercial.net)

Mitch Gold
410.456.2492
[**Mitch@goldcommercial.net**](mailto:Mitch@goldcommercial.net)

Office: 410.578.1300
www.goldcommercial.net

- **2,184 sf +/- Office/Warehouse**
- **Available for sale or lease**
- **Quiet end of the Avenue in Hampden near Wyman Park**
- **2 off-street parking spaces**
- **Recent renovations**
- **Conference room+kitchenette**
- **Secure access**
- **C-1 zoning**
- **Convenient walk to JHU**

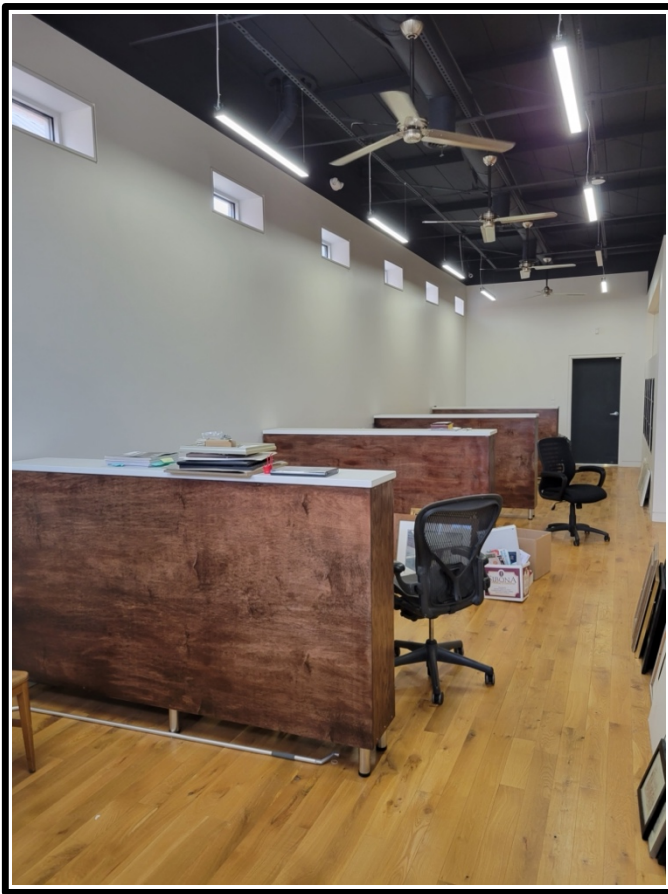


Gold and Company

Commercial Real Estate in the Baltimore Metropolitan Area

629 West 36th Street, Baltimore, Maryland 21211

LED Lights



Alex Simone / Mitch Gold
Gold and Company, LLC
5601 Newbury St.
Baltimore, MD 21209

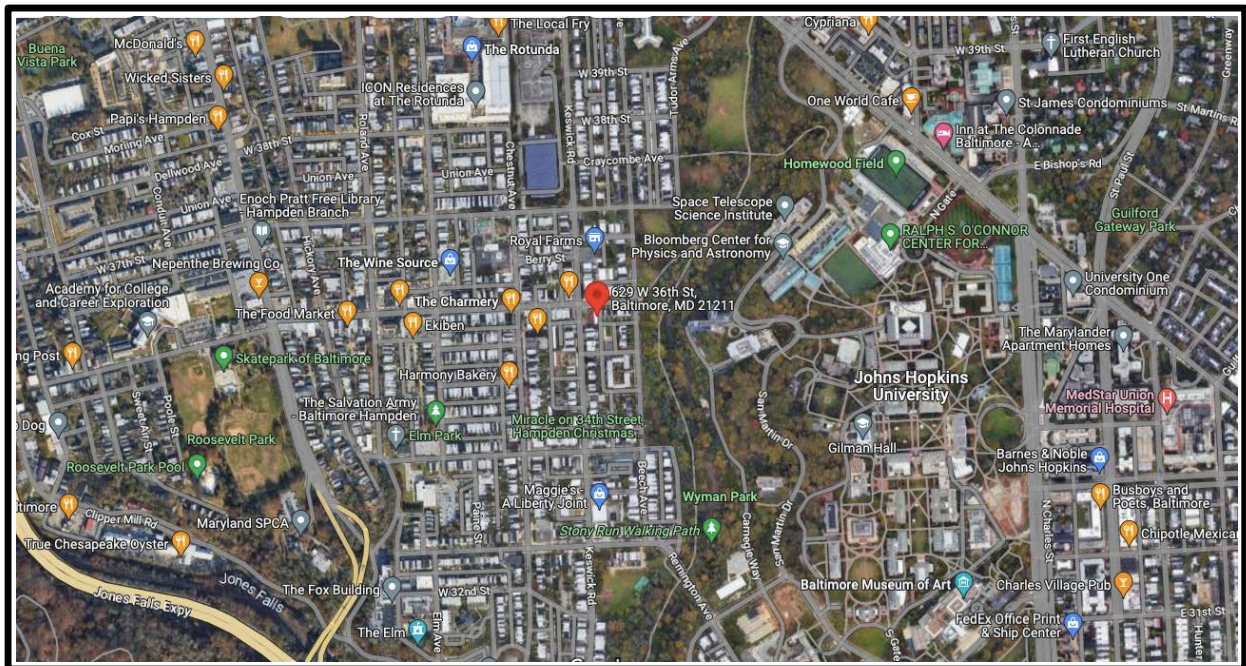
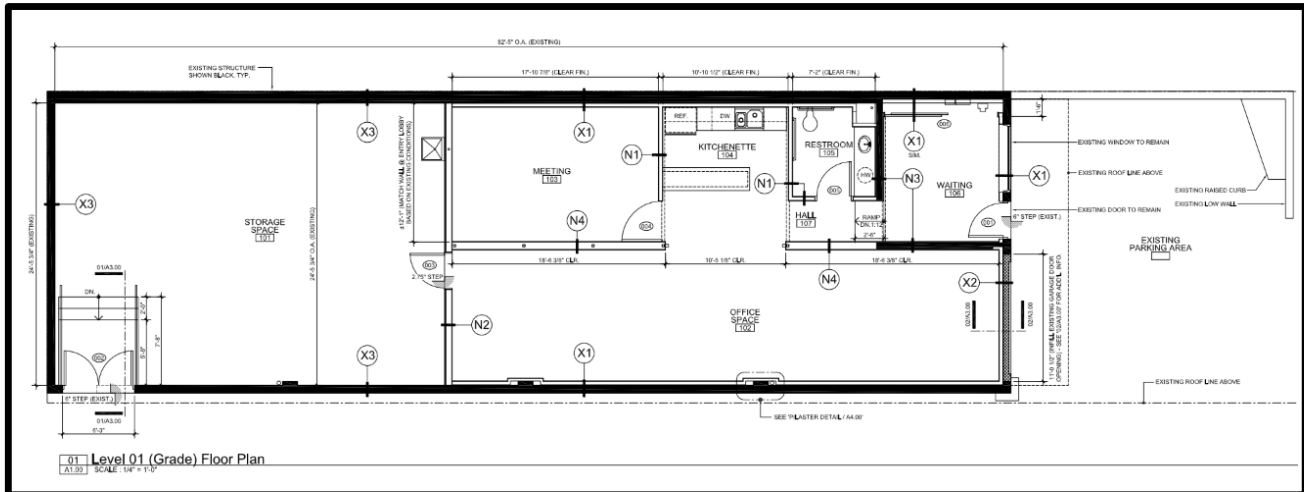
410.578.1300
www.goldcommercial.net



Gold and Company

Commercial Real Estate in the Baltimore Metropolitan Area

629 West 36th Street, Baltimore, Maryland 21211



Alex Simone / Mitch Gold
Gold and Company, LLC
5601 Newbury St.
Baltimore, MD 21209

410.578.1300
www.goldcommercial.net