



GOLD AND COMPANY, LLC



414 S Bond St. Baltimore MD 21231

Gold and Company, LLC

**5601 Newbury St.
Baltimore, MD 21209**

Mike Sontag
443.324.0077
[**Mike@goldcommercial.net**](mailto:Mike@goldcommercial.net)

Mitch Gold
410.456.2492
[**Mitch@goldcommercial.net**](mailto:Mitch@goldcommercial.net)

Office: 410.578.1300
www.goldcommercial.net

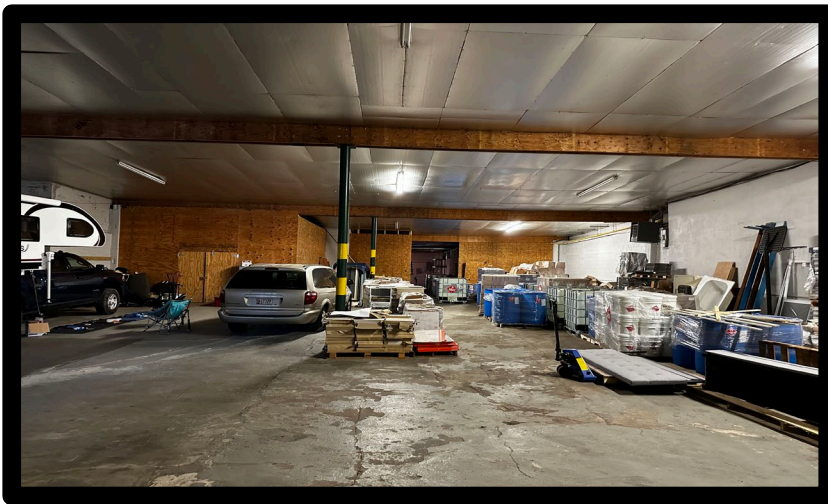
- **Office & Warehouse for Lease**
- **Fully Renovated Offices**
- **Fells Point Location**
- **R-8 Zoning with Warehouse Exception**
- **8,246 sf with Drive-In**
- **3,697 sf Office**
- **Excellent Access to Downtown and I-95**



Gold and Company

Commercial Real Estate in the Baltimore Metropolitan Area

414 S Bond St. Baltimore MD 21231



**Mike Sontag/ Mitch Gold
Gold and Company, LLC
5601 Newbury St.
Baltimore, MD 21209**

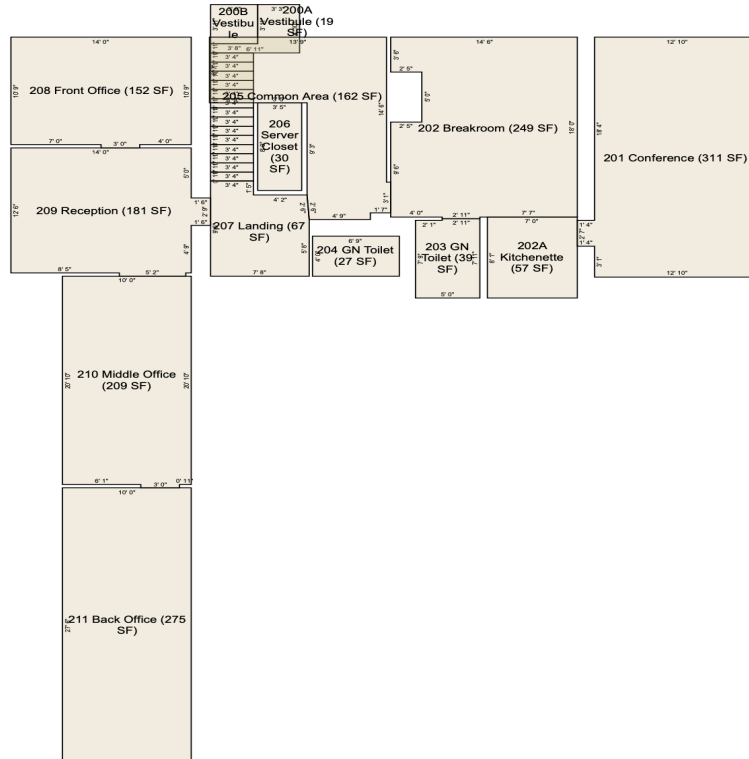
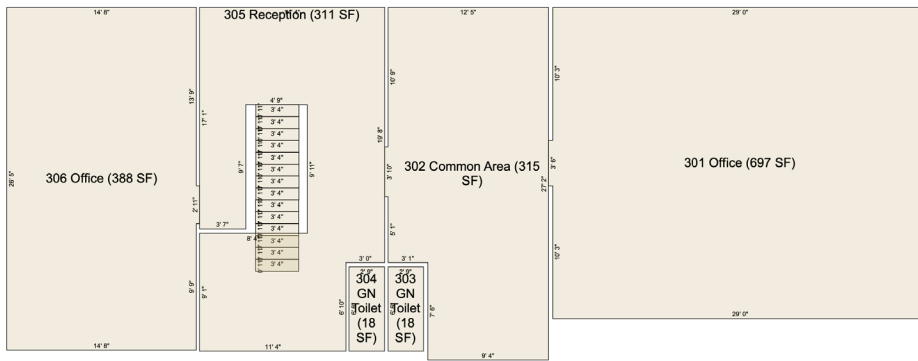
www.goldcommercial.net



Gold and Company

Commercial Real Estate in the Baltimore Metropolitan Area

414 S Bond St. Baltimore MD 21231

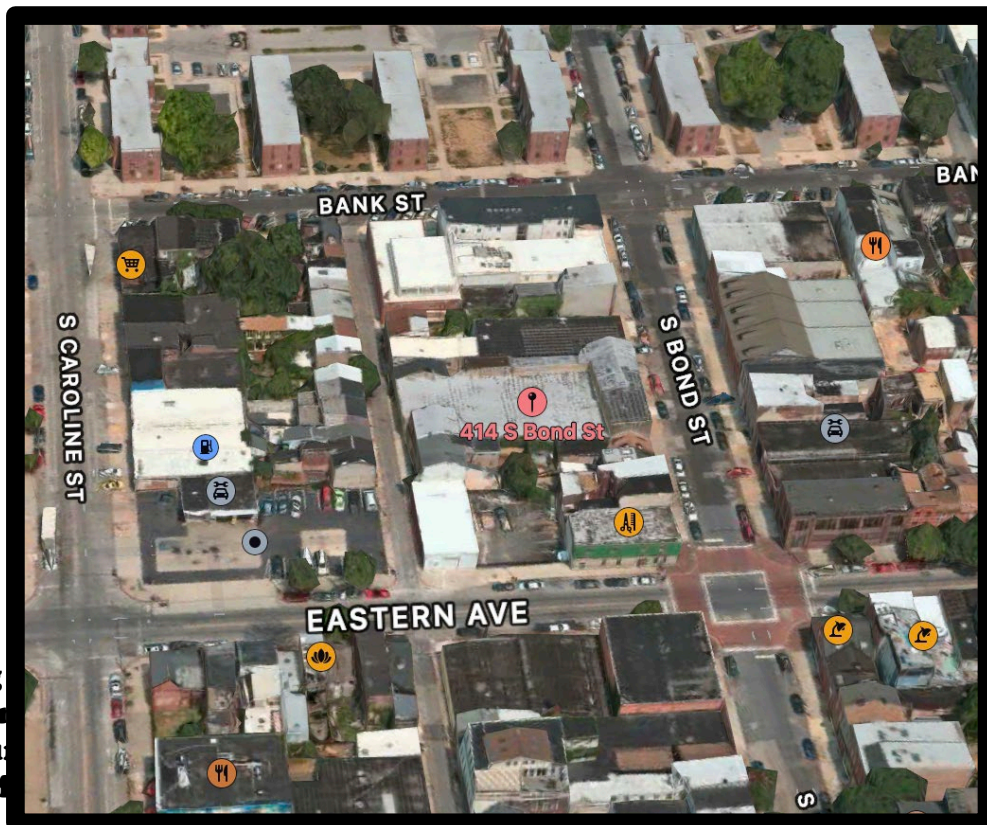




Gold and Company

Commercial Real Estate in the Baltimore Metropolitan Area

414 S Bond St. Baltimore MD 21231



Mike Sontag
Gold and Company
5601 Newburg Ave
Baltimore, MD 21286

www.mikesontag.com