



GOLD AND COMPANY, LLC

WWW.GOLDCOMMERCIAL.NET

Commercial Real Estate in the Baltimore Metropolitan Area



4100-4112 Aquarium Pl. MD 21215

Gold And Company, LLC

**5601 Newbury St.
Baltimore, MD 21209**

**Jim Chivers
443.928.7522 cell
jim@goldcommercial.net**

**Mike Sontag
443.324.0077 cell
mike@goldcommercial.net**

www.goldcommercial.net

- **Drive-In Flex Building Available**
- **17,580 sf Total Building Size**
- **Available from 2,580, 5,160 sf, 17,580 sf bays**
- **All At Grade Drive-In Access**
- **I-1 Baltimore City—Industrial Zoning**
- **New LED Lighting**
- **+/- 16' Ceiling Height**
- **2.5 Miles to I-83 / 4 Miles to I-695**
- **NW Baltimore City Industrial Submarket**
- **Ideal For Contractors, Light Manufacturing, Auto, Etc..**
- **Contact us for More Information**

This property offering is subject to change without notice. All information is deemed reliable but not guaranteed.

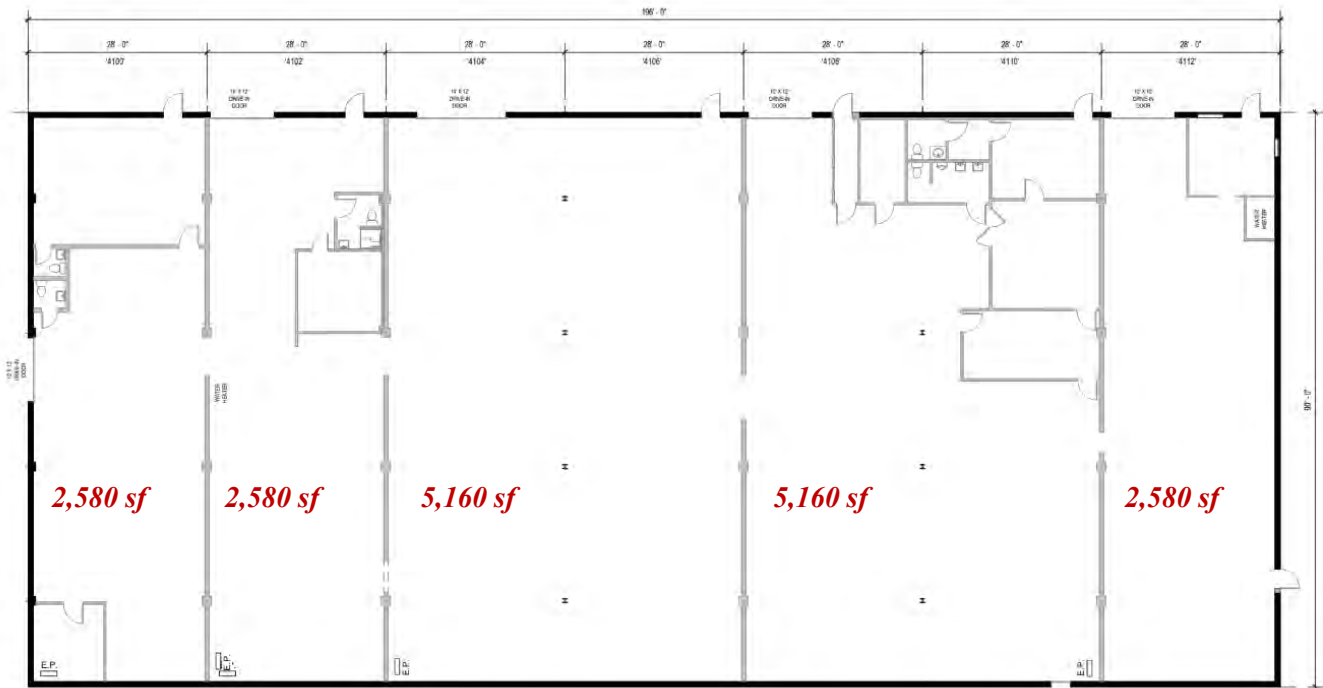


Gold And Company

Commercial Real Estate in the Baltimore Metropolitan Area

4100-4112 Aquarium Pl. MD 21215

Space Plan



Jim Chivers / Mike Sontag
Gold And Company, LLC
5601 Newbury St.
Baltimore, MD 21209

410.578.1300 (Office)

www.goldcommercial.net

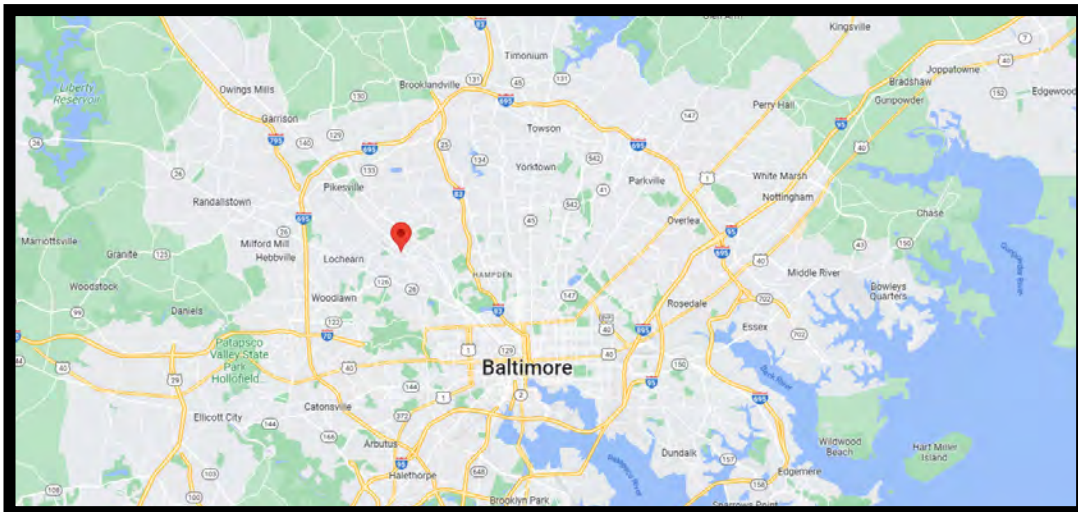


Gold And Company

Commercial Real Estate in the Baltimore Metropolitan Area

4100-4112 Aquarium Pl. MD 21215

Aerial / Map



Jim Chivers / Mike Sontag
Gold And Company, LLC
5601 Newbury St.
Baltimore, MD 21209

410.578.1300 (Office)

www.goldcommercial.net