



GOLD AND COMPANY, LLC

WWW.GOLDCOMMERCIAL.NET

Commercial Real Estate in the Baltimore Metropolitan Area



400 Myrth Ave. Essex, MD 21221

Gold And Company, LLC

**5601 Newbury St.
Baltimore, MD 21209**

**Jim Chivers
443.928.7522 cell
jim@goldcommercial.net
www.goldcommercial.net**

- **Liquor Store / Tavern Building and Business**
- **Available FOR SALE**
- **East Baltimore County / Essex Submarket**
- **+/- 3,500 sf Building**
- **Includes Walk-In Coolers and Hood Systems**
- **BL—Baltimore County Zoning**
- **Class D—7 Day BWL License**
- **Turn-Key Liquor Store and Bar Business**
- **Parking +/- 12 Off Street Parking Spaces**
- **Contact us For More Information**

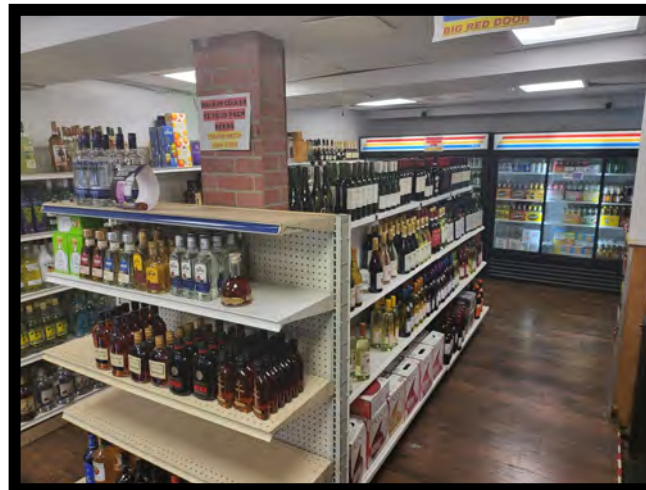
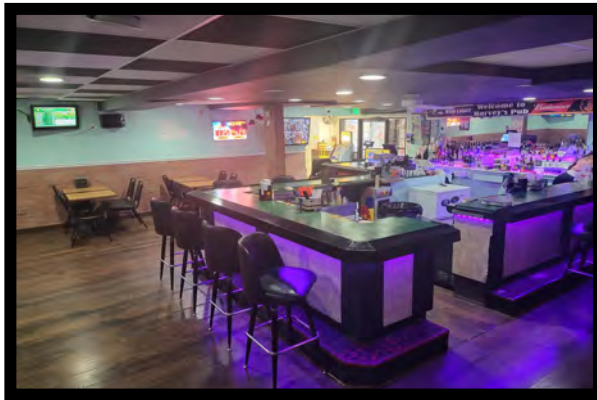
This property offering is subject to change without notice. All information is deemed reliable but not guaranteed.



Gold And Company

Commercial Real Estate in the Baltimore Metropolitan Area

Interior Pictures



Jim Chivers
Gold And Company, LLC
5601 Newbury St.
Baltimore, MD 21209

410.578.1300 (Office)

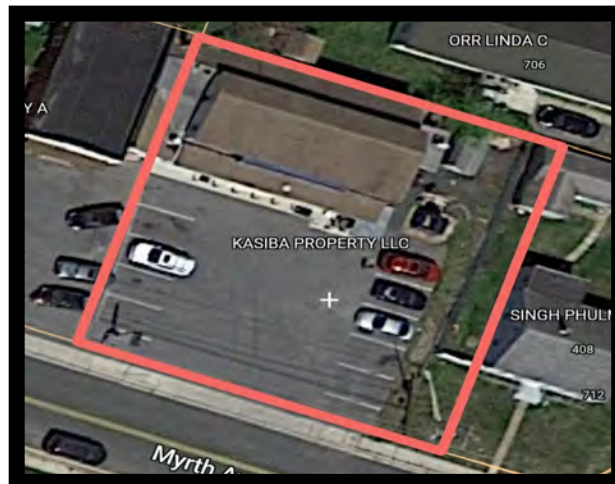
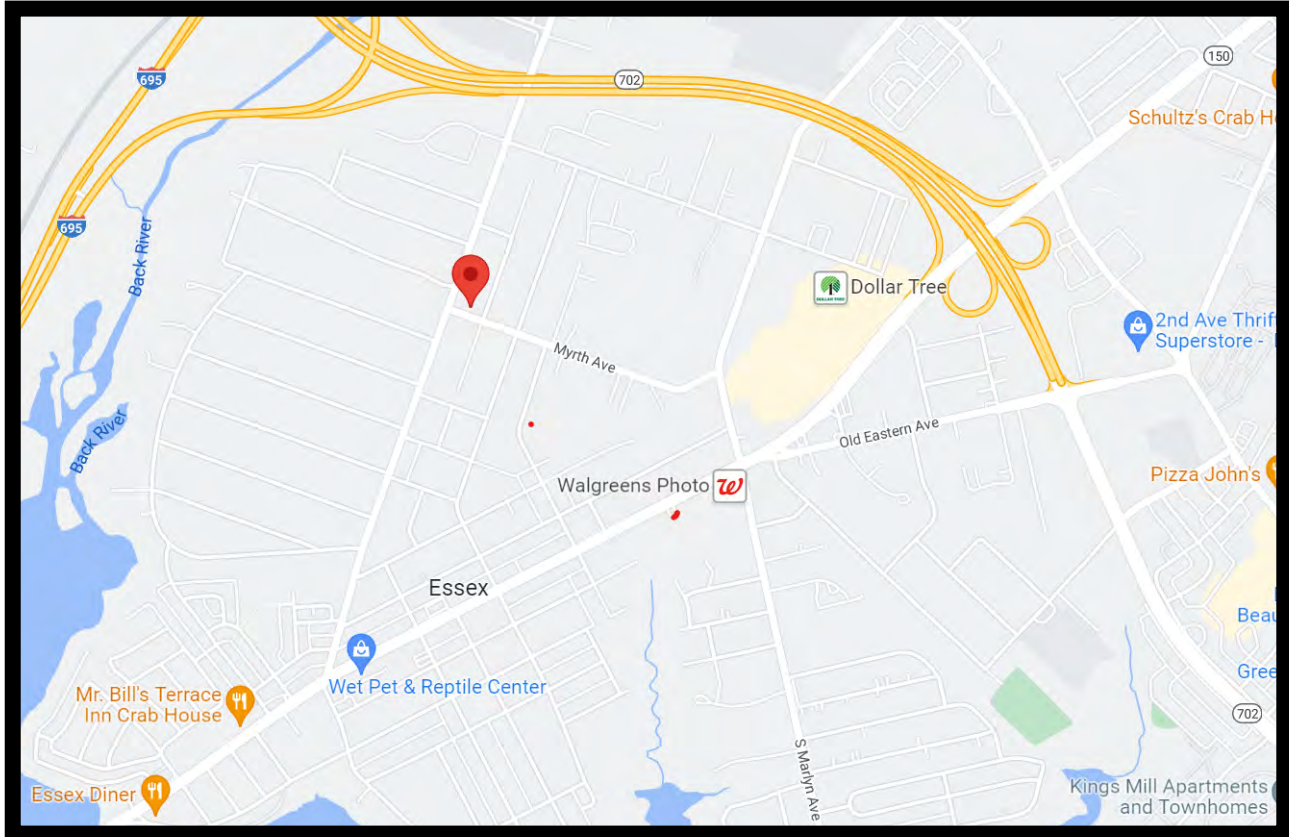
www.goldcommercial.net



Gold And Company

Commercial Real Estate in the Baltimore Metropolitan Area

Aerial and Map



Jim Chivers
Gold And Company, LLC
5601 Newbury St.
Baltimore, MD 21209

410.578.1300 (Office)

www.goldcommercial.net