



GOLD AND COMPANY, LLC

WWW.GOLDCOMMERCIAL.NET

Commercial Real Estate in the Baltimore Metropolitan Area



3432 S. Hanover St. Baltimore, MD 21225

Gold And Company, LLC

**5601 Newbury St.
Baltimore, MD 21209**

**Jim Chivers
443.928.7522 cell
jim@goldcommercial.net
www.goldcommercial.net**

- **Commercial / Tavern Building Available FOR SALE**
- **South Baltimore Submarket**
- **69' Frontage on S. Hanover and Potee St.**
- **Rear Concrete Parking Pad / Storage Area**
- **Includes Walk-In Coolers and Refrigeration Units**
- **C-2 Zoning**
- **Liquor License can be included**
- **Short Distance to Federal Hill and Baltimore Peninsula**
- **Ideal for Brewery, Tavern, Catering, Commissaries**
- **Contact us For More Information**

This property offering is subject to change without notice. All information is deemed reliable but not guaranteed.



Gold And Company

Commercial Real Estate in the Baltimore Metropolitan Area

3432 S. Hanover St. Baltimore, MD

Additional Pictures



Jim Chivers
Gold And Company, LLC
5601 Newbury St.
Baltimore, MD 21209

410.578.1300 (Office)

www.goldcommercial.net

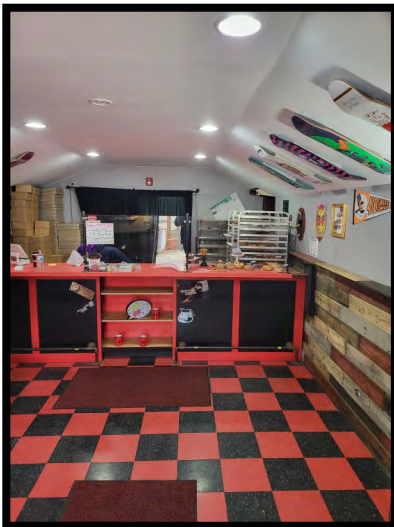


Gold And Company

Commercial Real Estate in the Baltimore Metropolitan Area

3432 S. Hanover St. Baltimore, MD

Additional Pictures



Jim Chivers
Gold And Company, LLC
5601 Newbury St.
Baltimore, MD 21209

410.578.1300 (Office)

www.goldcommercial.net



Gold And Company

Commercial Real Estate in the Baltimore Metropolitan Area

Aerials



Jim Chivers
Gold And Company, LLC

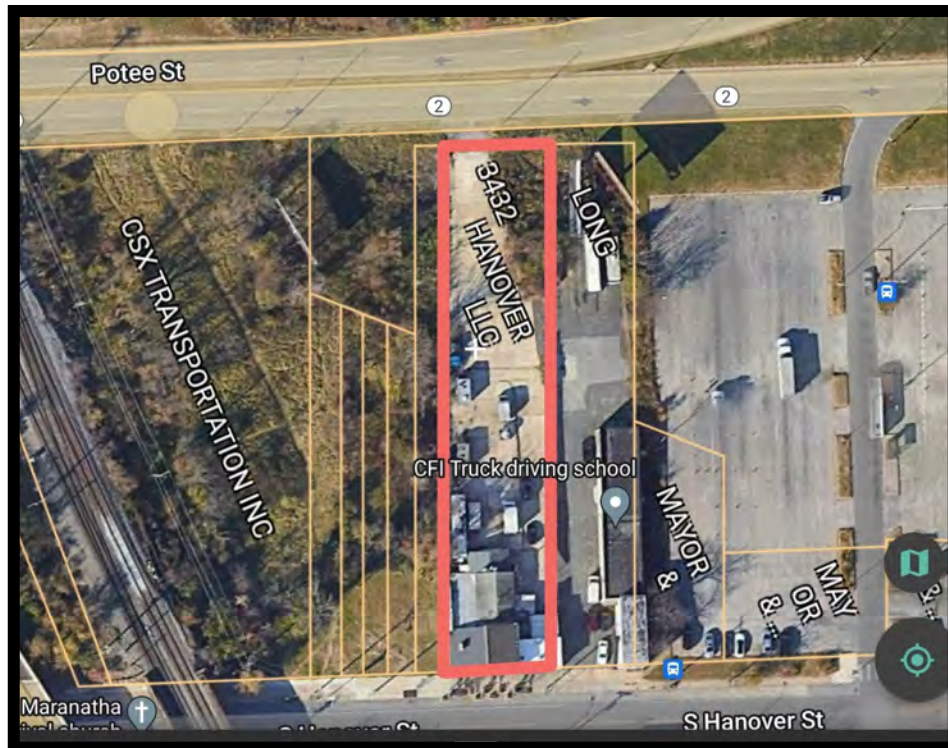
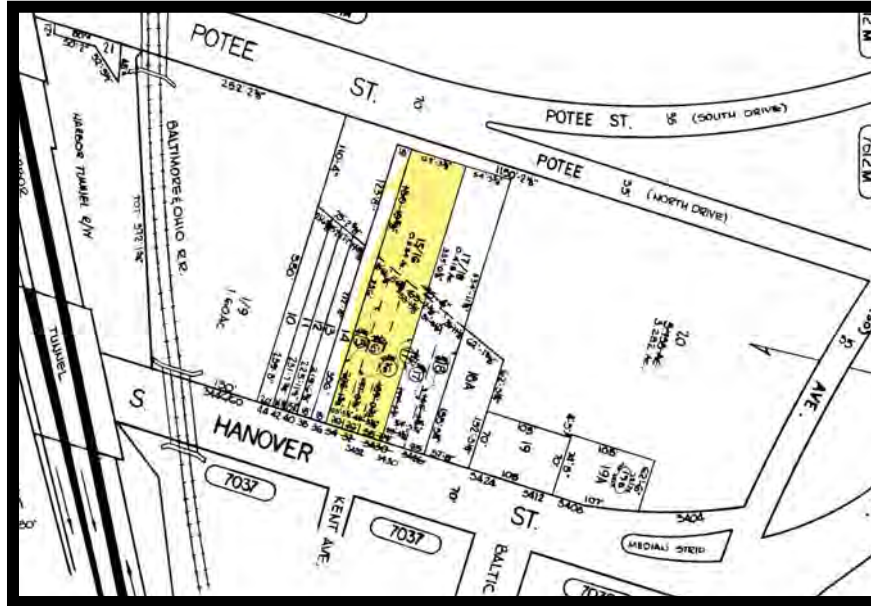
410.578.1300 (Office)



Gold And Company

Commercial Real Estate in the Baltimore Metropolitan Area

Block Map and Site



Jim Chivers
Gold And Company, LLC
5601 Newbury St.
Baltimore, MD 21209

410.578.1300 (Office)

www.goldcommercial.net