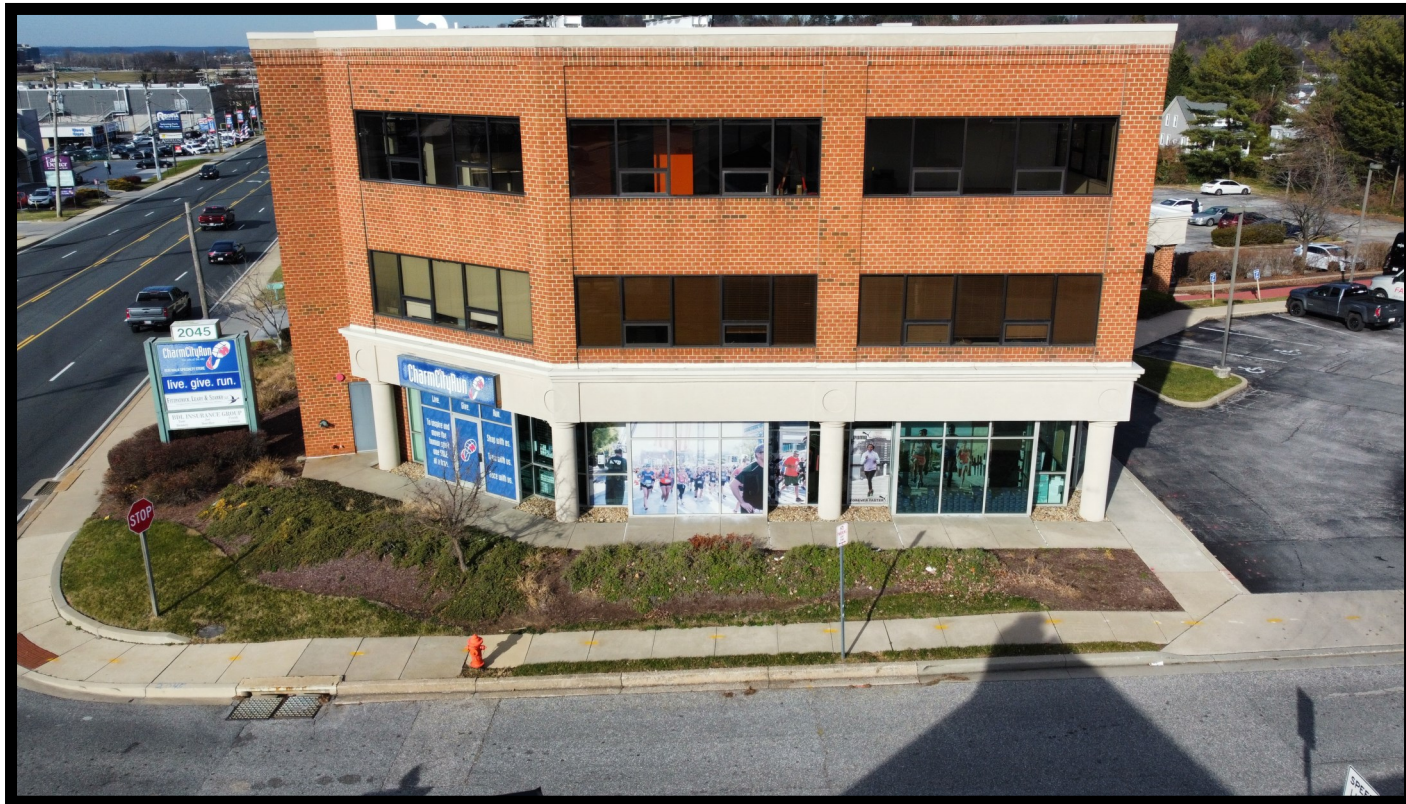




GOLD AND COMPANY, LLC

WWW.GOLDCOMMERCIAL.NET

Commercial Real Estate in the Baltimore Metropolitan Area



2045 York Rd. Timonium, MD 21093

Gold And Company, LLC

**5601 Newbury St.
Baltimore, MD 21209**

For More Information:

**Jim Chivers
443.928.7522 cell
jim@goldcommercial.net**

**Will McCullough
410.292.2985 cell
will@goldcommercial.net**

www.goldcommercial.net

- **Retail / Office Space FOR LEASE**
- **+/- 3,900 sf Space Available**
- **Street Level—Excellent Visibility**
- **Prime Location on York Rd.**
- **Open Floor Plan**
- **Off-Street Parking Available**
- **BL Zoning—Business Local**
- **Traffic Count: +/- 27,000 ADT**
- **Contact For More Information**

This property offering is subject to change without notice. All information is deemed reliable but not guaranteed.

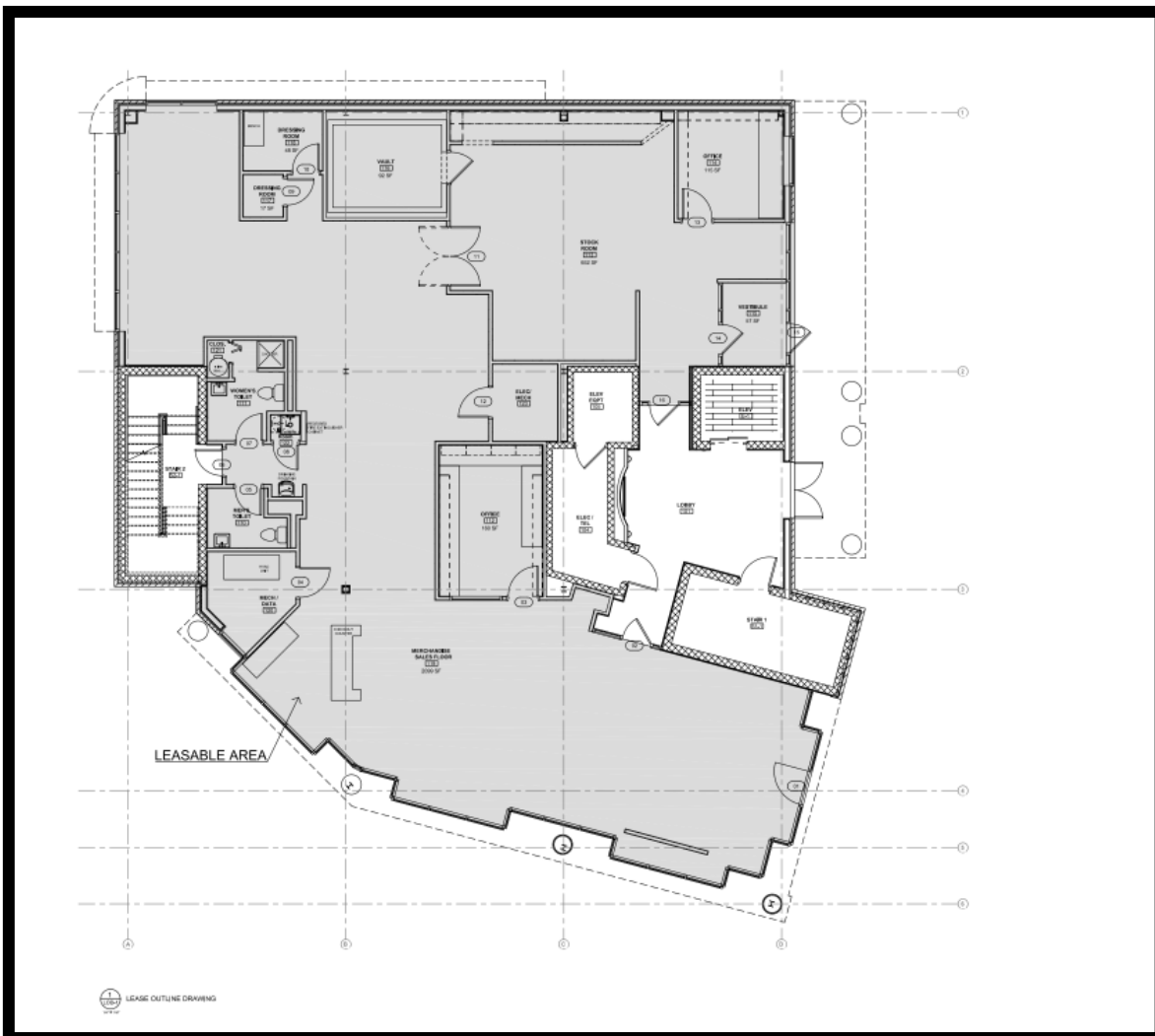


Gold And Company

Commercial Real Estate in the Baltimore Metropolitan Area

2045 York Rd. Timonium, MD 21093

Space Plan



Jim Chivers / Will McCullough
Gold And Company, LLC
5601 Newbury St.
Baltimore, MD 21209

410.578.1300 (Office)

www.goldcommercial.net



Gold And Company

Commercial Real Estate in the Baltimore Metropolitan Area

2045 York Rd. Timonium, MD 21093

Birds Eye View



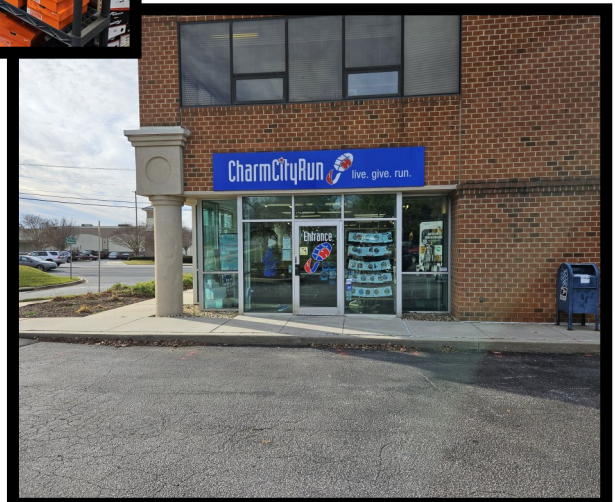
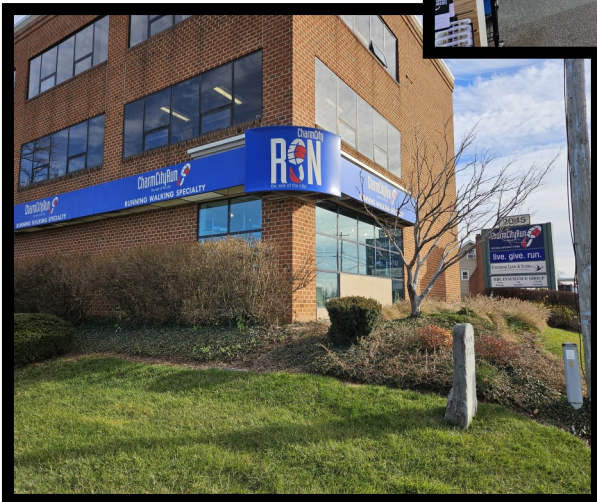


Gold And Company

Commercial Real Estate in the Baltimore Metropolitan Area

2045 York Rd. Timonium, MD 21093

Additional Pictures



Jim Chivers / Will McCullough

410.578.1300 (Office)