



GOLD AND COMPANY, LLC

WWW.GOLDCOMMERCIAL.NET

Commercial Real Estate in the Baltimore Metropolitan Area



1009 & 1011 W. Barre St. Baltimore, MD 21230

Gold And Company, LLC

**5601 Newbury St.
Baltimore, MD 21209**

For More Information:

**Jim Chivers
443.928.7522 cell
jim@goldcommercial.net**

www.goldcommercial.net

- +/- 7,000 sf Buildings in the Pigtown Neighborhood
- Available FOR SALE or LEASE
- Flex / Warehouse Buildings
- Two Parcels—Can Sell / Lease Separately
- 1009 W Barre St.— +/- 1,500 sf
- 1011 W Barre St.— +/- 5,500 sf
- Adjacent to Washington Blvd. and MLK Blvd.
- Drive-In Loading w/ Some Off Street Parking
- C-2 Zoning—Baltimore City
- +/- 14'-16' Warehouse Ceiling Height
- Call For More Information
- Contact for More Information

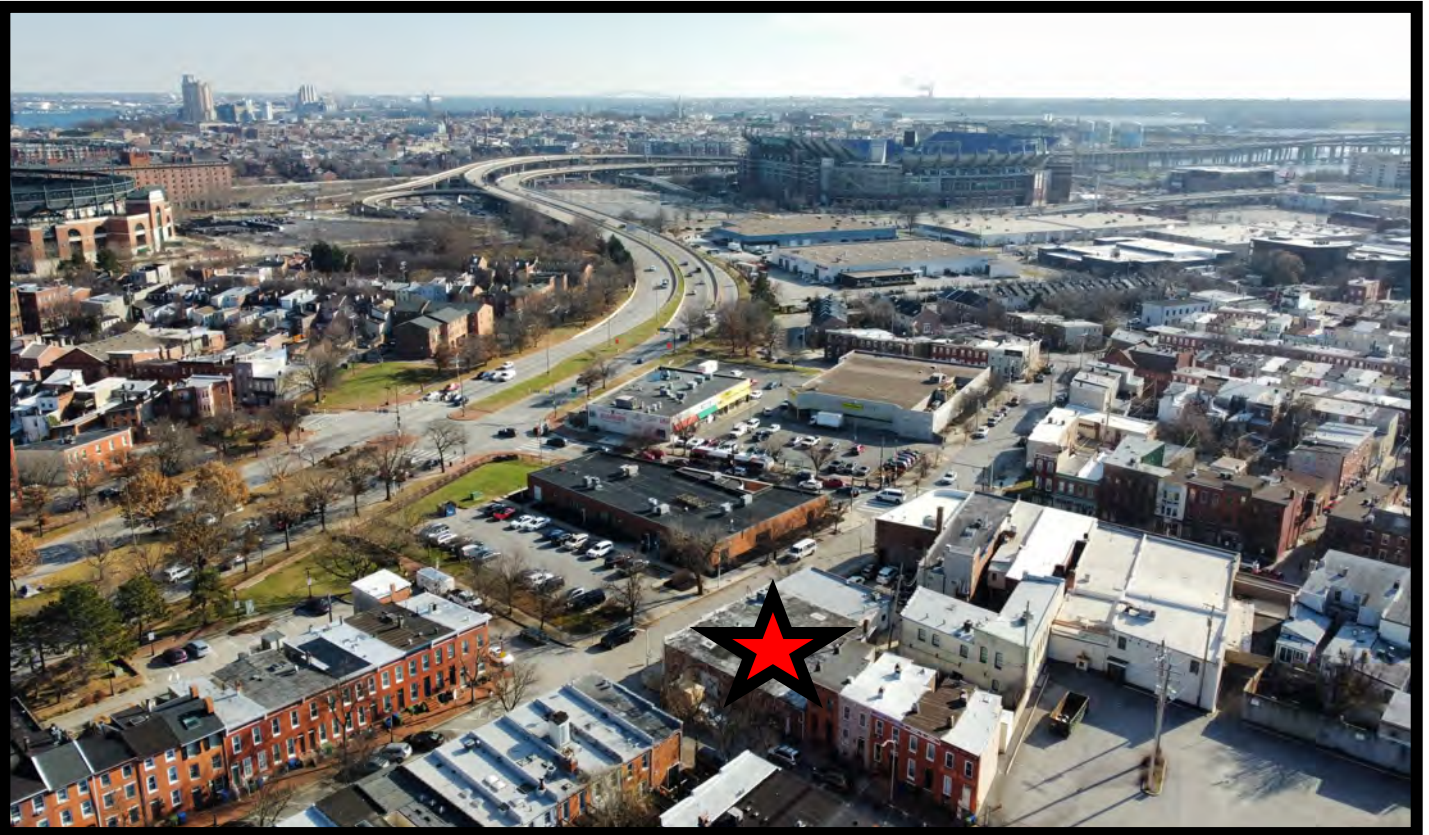
This property offering is subject to change without notice. All information is deemed reliable but not guaranteed.



Gold And Company

Commercial Real Estate in the Baltimore Metropolitan Area

Additional Pictures



Jim Chivers

Jim@goldcommercial.net

410.578.1300 (Office)

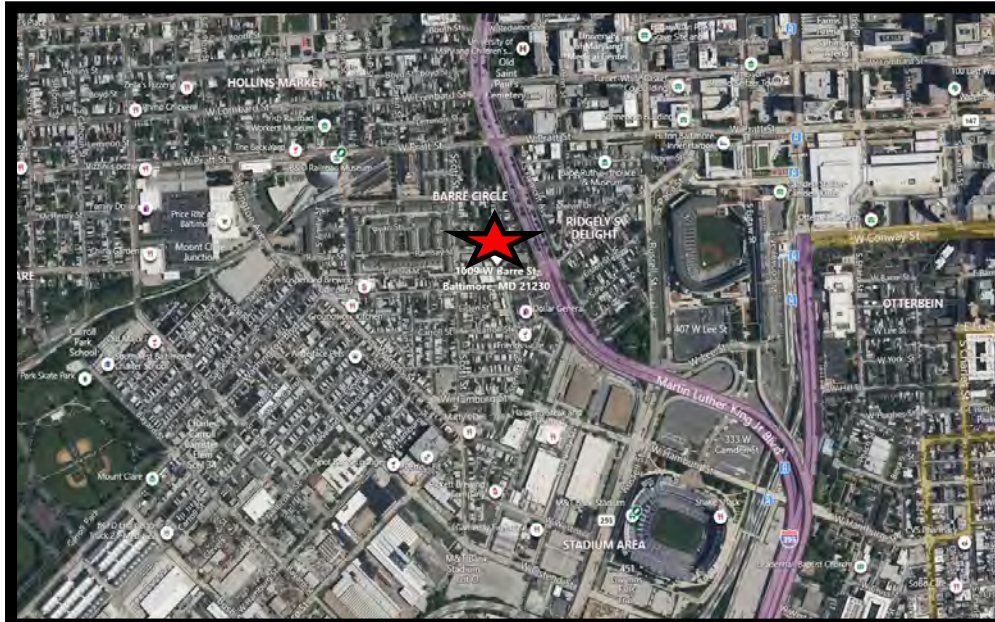
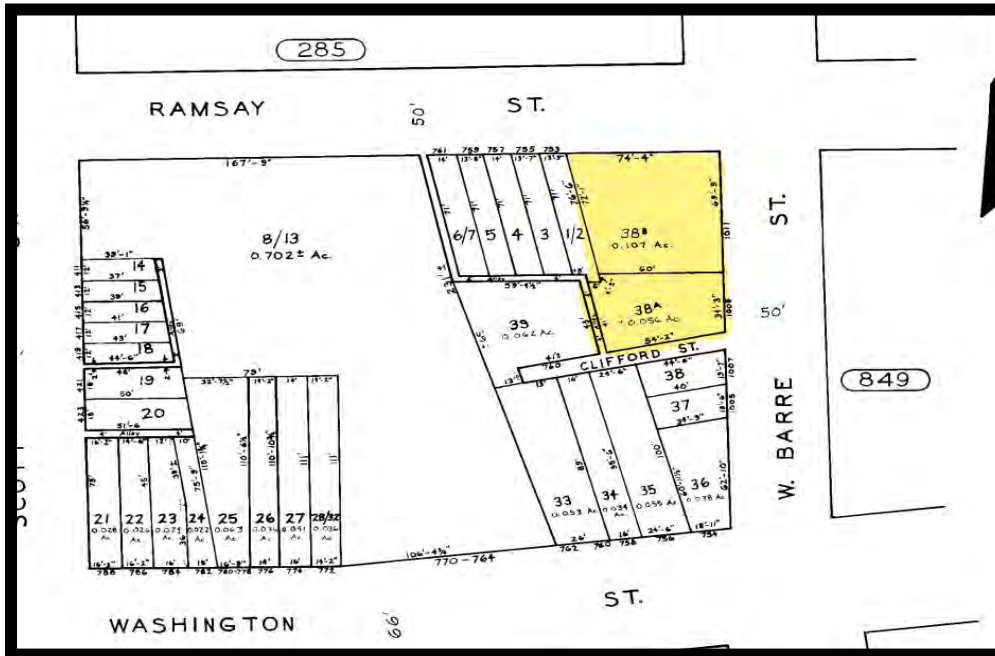


Gold And Company

Commercial Real Estate in the Baltimore Metropolitan Area

1009 & 1011 W. Barre St. Baltimore, MD 21230

BLOCK MAP AND AREA MAP



Jim Chivers
Gold And Company, LLC

410.578.1300 (Office)
www.goldcommercial.net