



GOLD AND COMPANY, LLC



120 Sister Pierre Drive, #205, Towson, MD 21204

Gold and Company, LLC

**5601 Newbury St.
Baltimore, MD 21209**

**Alex Simone
443.845.4413
Alex@goldcommercial.net**

**Mitch Gold
410.456.2492
Mitch@goldcommercial.net**

**Office: 410.578.1300
www.goldcommercial.net**

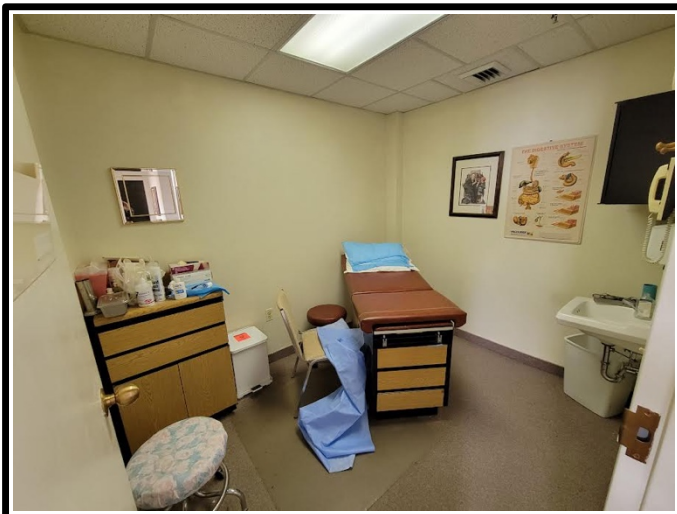
- **Medical Office Condominium
FOR SALE**
- **1,052 +/- sf**
- **4 private offices**
- **Reception + Admin area**
- **Storage unit included**
- **2 deeded parking spaces incl.**
- **Part of the UMD/St. Joseph's
Towson medical campus**
- **Convenient to downtown
Towson and many amenities**



Gold and Company

Commercial Real Estate in the Baltimore Metropolitan Area

120 Sister Pierre Drive, #205, Towson, MD 21204



**Alex Simone / Mitch Gold
Gold and Company, LLC
5601 Newbury St.
Baltimore, MD 21209**

**410.578.1300
www.goldcommercial.net**

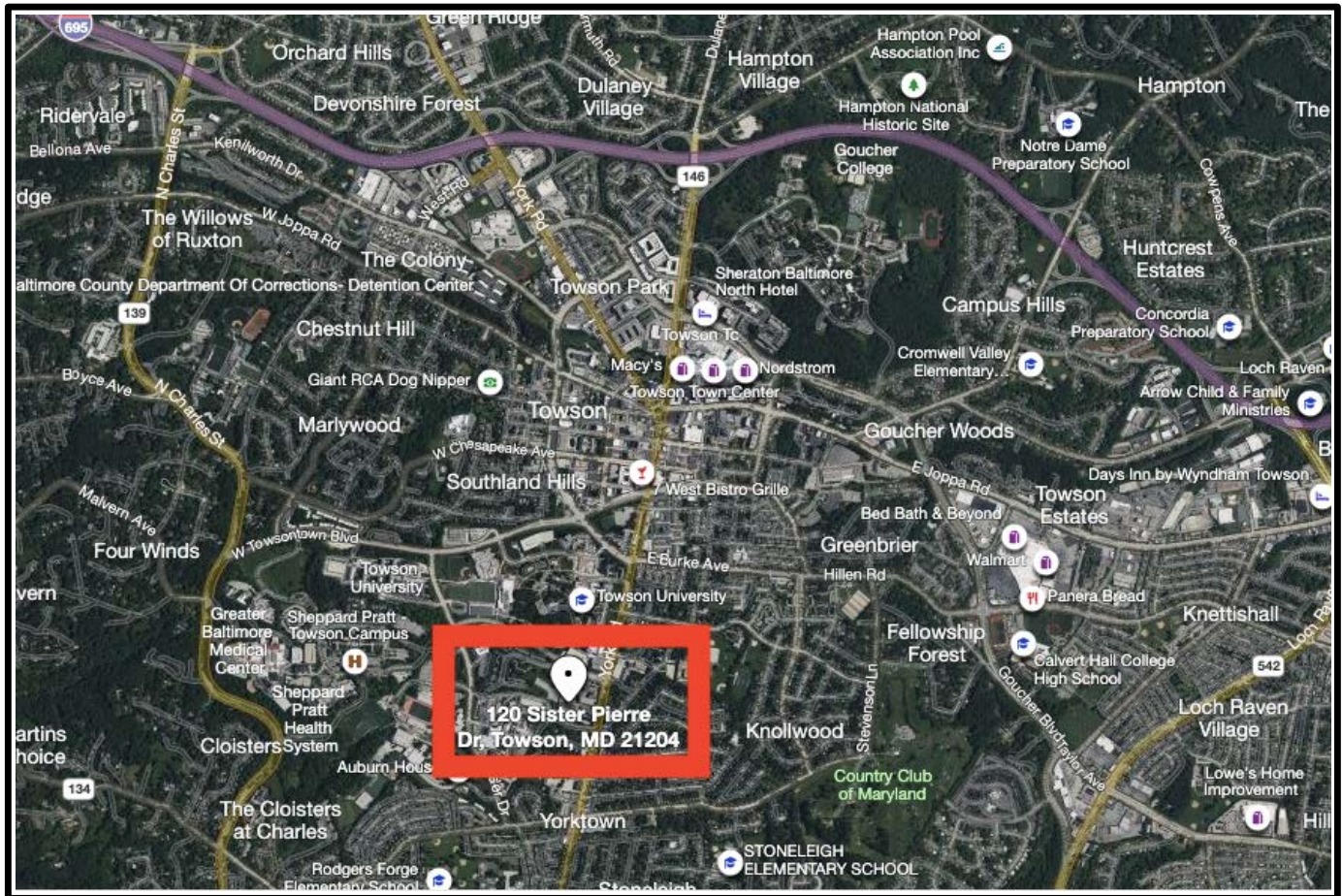


Est. 1999

Gold and Company

Commercial Real Estate in the Baltimore Metropolitan Area

120 Sister Pierre Drive, #205, Towson, MD 21204



Just a short walk to Downtown Towson

**Alex Simone / Mitch Gold
Gold and Company, LLC
5601 Newbury St.
Baltimore, MD 21209**

**410.578.1300
www.goldcommercial.net**