



GOLD AND COMPANY, LLC

WWW.GOLDCOMMERCIAL.NET

Commercial Real Estate in the Baltimore Metropolitan Area



1000 S. Linwood Ave. Baltimore, MD 21224

**Gold And
Company, LLC**

**5601 Newbury St.
Baltimore, MD 21209**

For More Information:

**Jim Chivers
443.928.7522 cell
jim@goldcommercial.net**

www.goldcommercial.net

- **+/- 11,000 sf Building in the Heart of Canton**
- **Available FOR SALE**
- **Adjacent to O'Donnell St. and the Canton Square**
- **Drive-In Loading**
- **2 Story Office**
- **+/- 16'-18' Warehouse Ceiling Height**
- **C-1 Zoning—Baltimore City**
- **Contact for More Information**

This property offering is subject to change without notice. All information is deemed reliable but not guaranteed.



Gold And Company

Commercial Real Estate in the Baltimore Metropolitan Area

Additional Pictures



Jim Chivers

Jim@goldcommercial.net

410.578.1300 (Office)

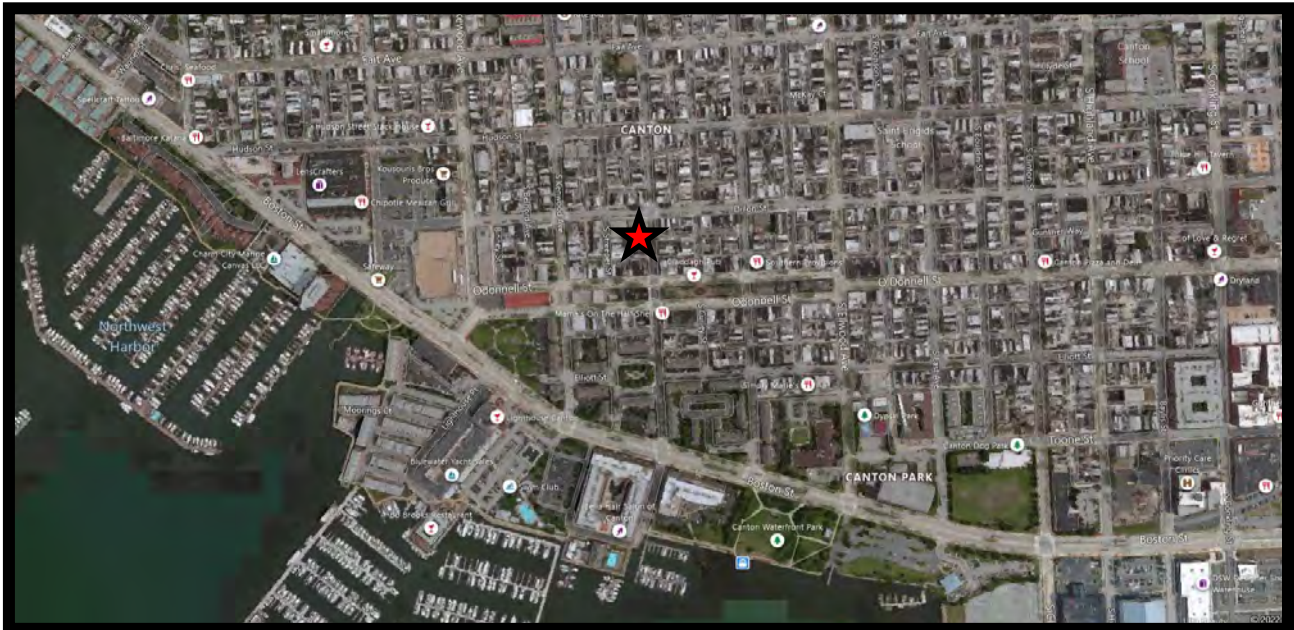
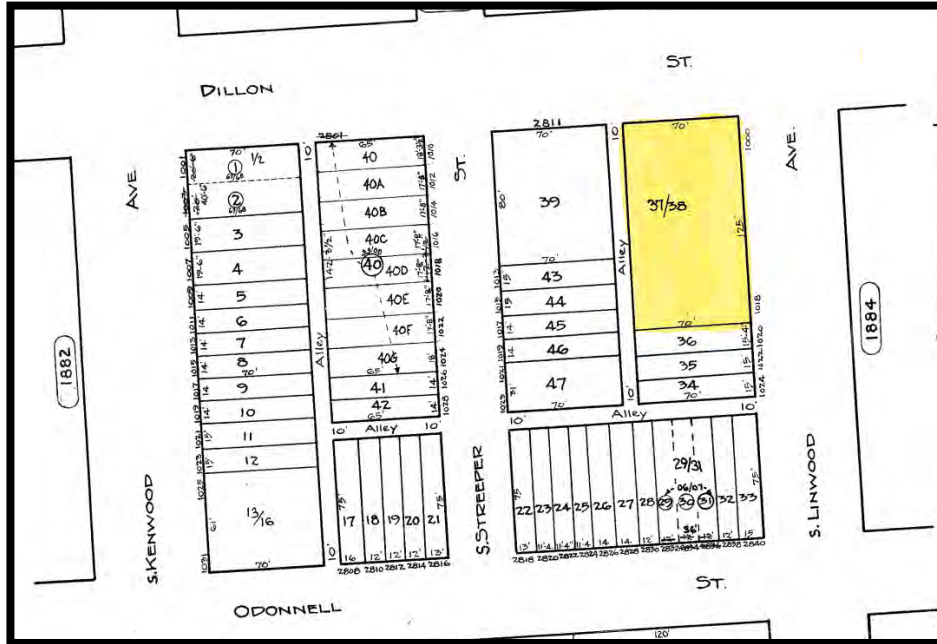


Gold And Company

Commercial Real Estate in the Baltimore Metropolitan Area

1000 S. Linwood Ave. Baltimore, MD 21224

BLOCK MAP AND AREA MAP



Jim Chivers
Gold And Company, LLC

410.578.1300 (Office)
www.goldcommercial.net