



# **GOLD AND COMPANY, LLC**

**WWW.GOLDCOMMERCIAL.NET**

***Commercial Real Estate in the Baltimore Metropolitan Area***



**732 S. Broadway Ave. Baltimore, MD 21231**

## **Gold And Company, LLC**

**5601 Newbury St.  
Baltimore, MD 21209**

**For More Information:**

**Jim Chivers  
443.928.7522 cell  
jim@goldcommercial.net**

**www.goldcommercial.net**

- **Fells Point Building Available FOR SALE**
- **Located in the Heart of Historic Fells Point**
- **+/- 2,200 sf**
- **Street Level Retail / Office**
- **Apartment on Upper Levels**
- **C-1-E Zoning—Baltimore City**
- **Call for More Information**

This property offering is subject to change without notice. All information is deemed reliable but not guaranteed.

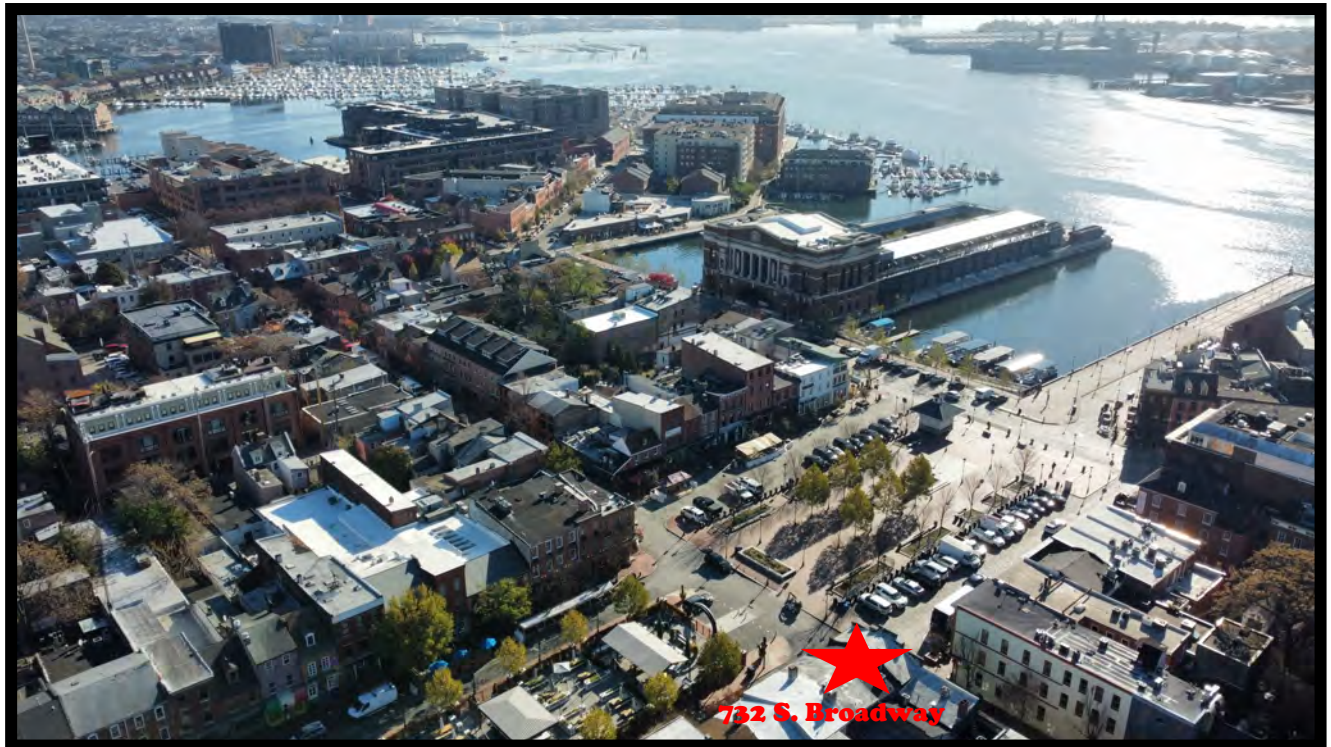




# Gold And Company

*Commercial Real Estate in the Baltimore Metropolitan Area*

## Fells Point Aerials



**Jim Chivers**

**Jim@goldcommercial.net**

**410.578.1300 (Office)**



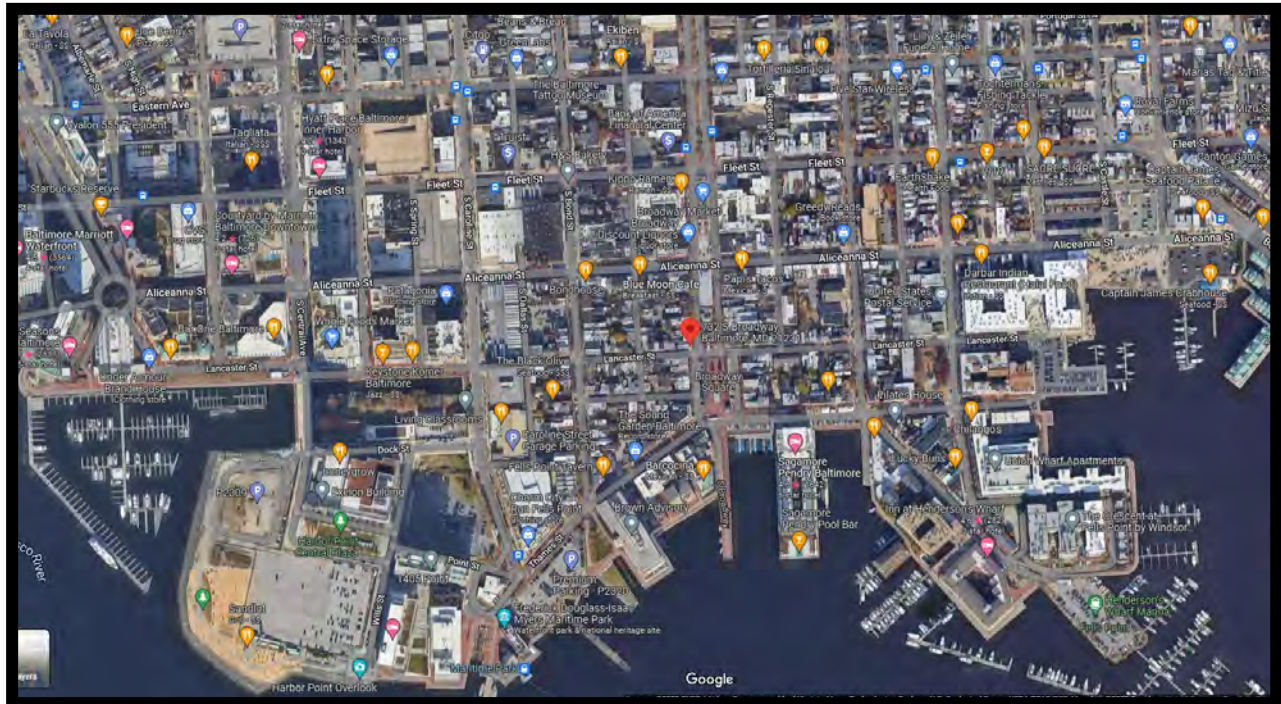
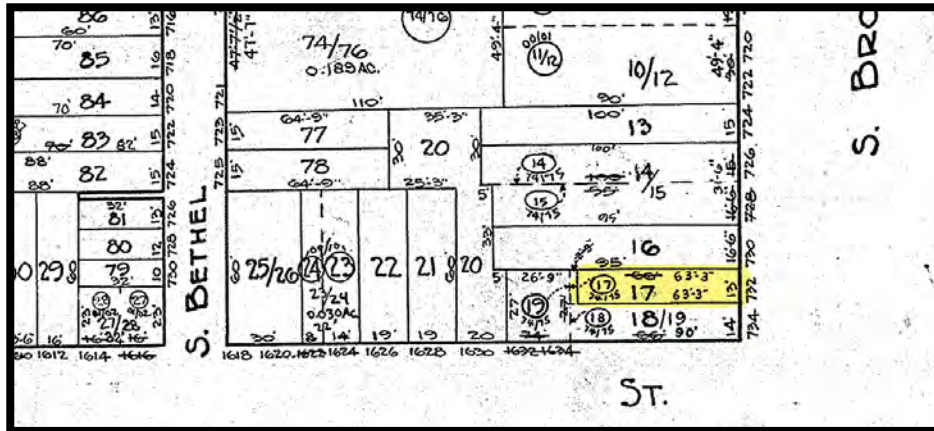


# Gold And Company

*Commercial Real Estate in the Baltimore Metropolitan Area*

**732 S. Broadway Ave. Baltimore, MD 21231**

## BLOCK MAP AND AREA MAP



**Jim Chivers**  
**Gold And Company, LLC**  
**5601 Newbury St.**  
**Baltimore, MD 21209**

**410.578.1300 (Office)**

**[www.goldcommercial.net](http://www.goldcommercial.net)**