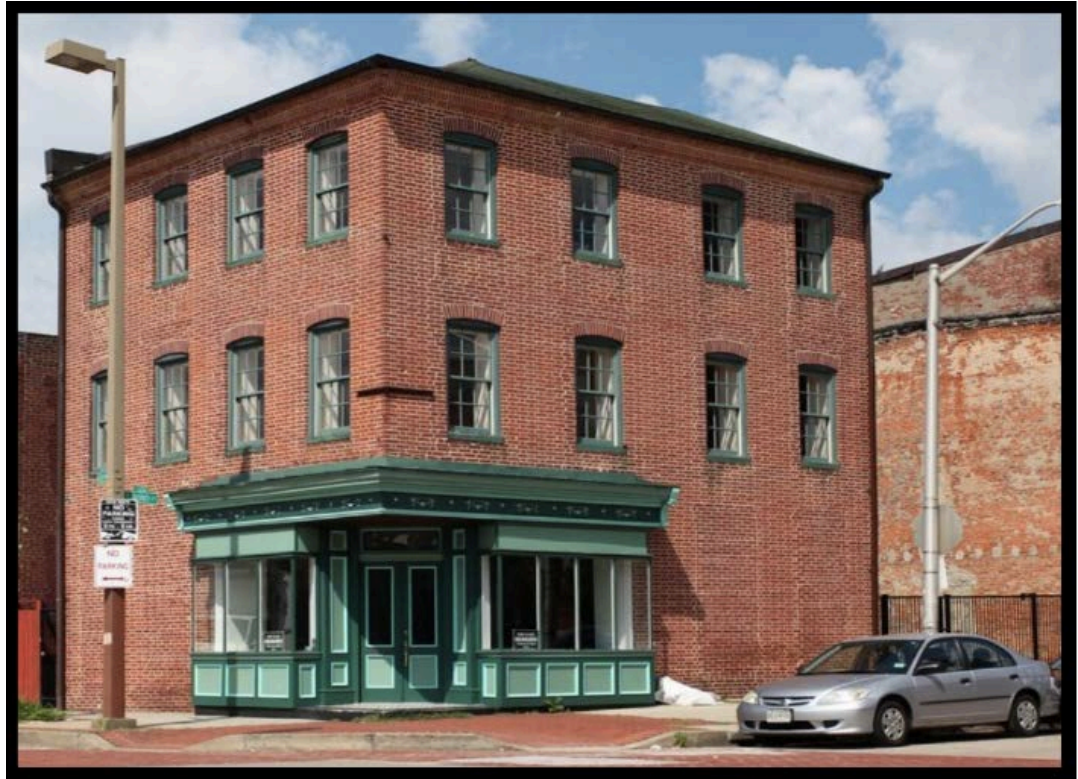




# **GOLD AND COMPANY, LLC**



**1534 Fleet Street, Baltimore, Maryland 21231**

## **Gold and Company, LLC**

**5601 Newbury St.  
Baltimore, MD 21209**

**Alex Simone**  
**443.845.4413**  
[\*\*Alex@goldcommercial.net\*\*](mailto:Alex@goldcommercial.net)

**Mitch Gold**  
**410.456.2492**  
[\*\*Mitch@goldcommercial.net\*\*](mailto:Mitch@goldcommercial.net)

**Office: 410.578.1300**  
**www.goldcommercial.net**

- **Available for lease or sale**
- **Classic Renovation of an Historic Building**
- **3,000 +/- sf**
- **Secure parking for 5**
- **Ideal for professional service providers, tech firms, etc.**
- **C-1 zoning**
- **Fells Point CHAP Historic district**
- **Move-in Ready**



# Gold and Company

*Commercial Real Estate in the Baltimore Metropolitan Area*

**1534 Fleet Street, Baltimore, Maryland 21231**



**Alex Simone / Mitch Gold**  
**Gold and Company, LLC**  
**5601 Newbury St.**  
**Baltimore, MD 21209**

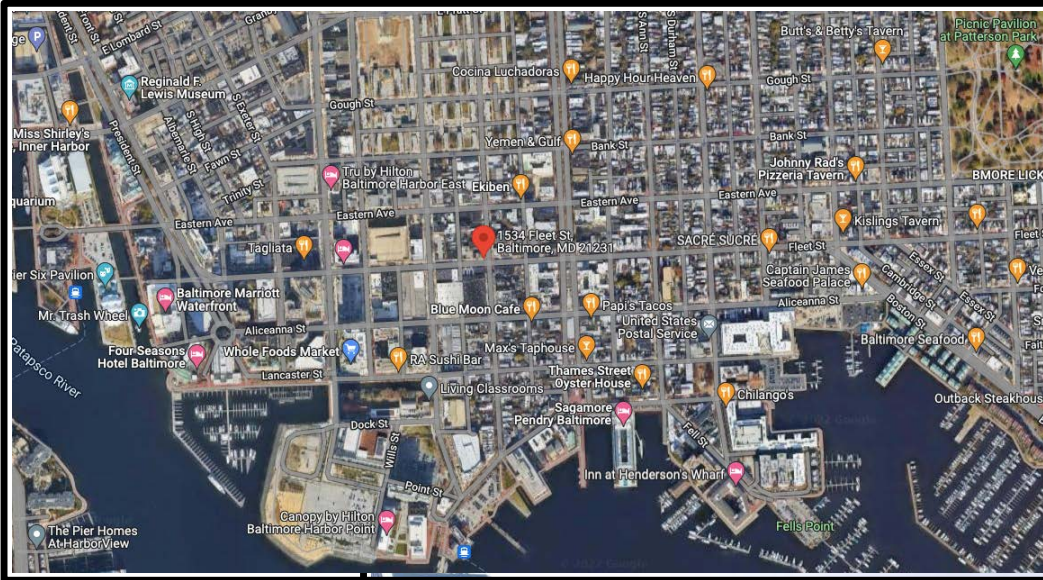
**410.578.1300**  
**[www.goldcommercial.net](http://www.goldcommercial.net)**



# Gold and Company

*Commercial Real Estate in the Baltimore Metropolitan Area*

**1534 Fleet Street, Baltimore, Maryland 21231**



**Alex Simone / Mitch Gold**  
**Gold and Company, LLC**  
**5601 Newbury St.**  
**Baltimore, MD 21209**

**410.578.1300**  
**[www.goldcommercial.net](http://www.goldcommercial.net)**