



GOLD AND COMPANY, LLC

WWW.GOLDCOMMERCIAL.NET

Commercial Real Estate in the Baltimore Metropolitan Area



5535 Harford Rd. Baltimore, MD 21214

**Gold And
Company, LLC**

**5601 Newbury St.
Baltimore, MD 21209**

For More Information:

**Jim Chivers
443.928.7522 cell
jim@goldcommercial.net**

www.goldcommercial.net

- **+/- 2,100 sf Commercial Building FOR SALE**
- **Includes +/- 14 Off Street Parking Spaces**
- **C-1 Zoning—Baltimore City**
- **Located in the Heart of the Hamilton Business District**
- **60' Frontage on Harford Rd.**
- **Located Near the Expanding Morgan State**
- **Ideal for Owner-User (Medical, Retail, Office, Etc.)**
- **New Roof Installed**
- **2nd Floor Space**
- **Call For More Information**

This property offering is subject to change without notice. All information is deemed reliable but not guaranteed.

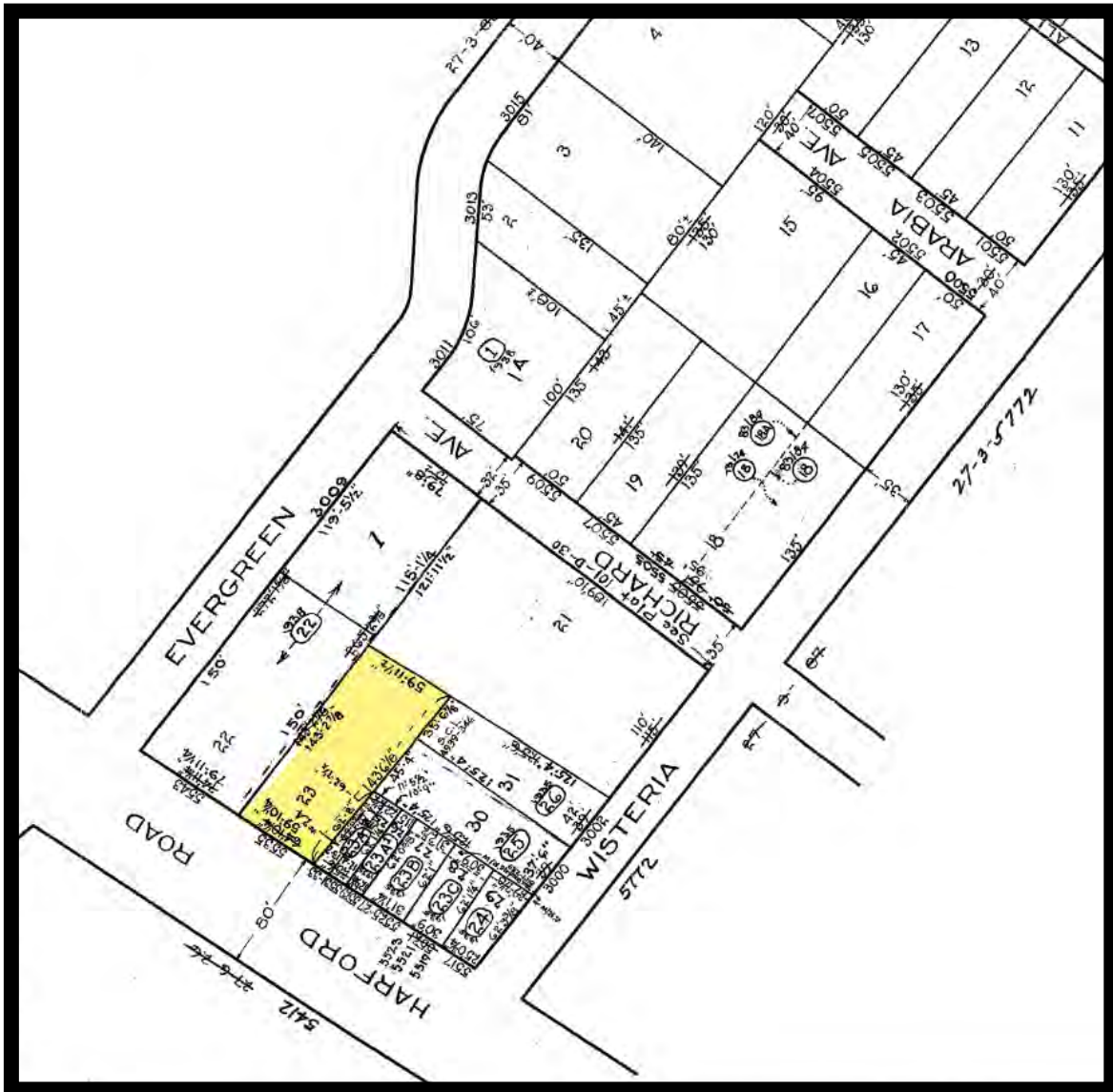


Gold And Company

Commercial Real Estate in the Baltimore Metropolitan Area

5535 Harford Rd. Baltimore, MD 21214

Block Map



Jim Chivers
Gold And Company, LLC
5601 Newbury St.
Baltimore, MD 21209

410.578.1300 (Office)

www.goldcommercial.net

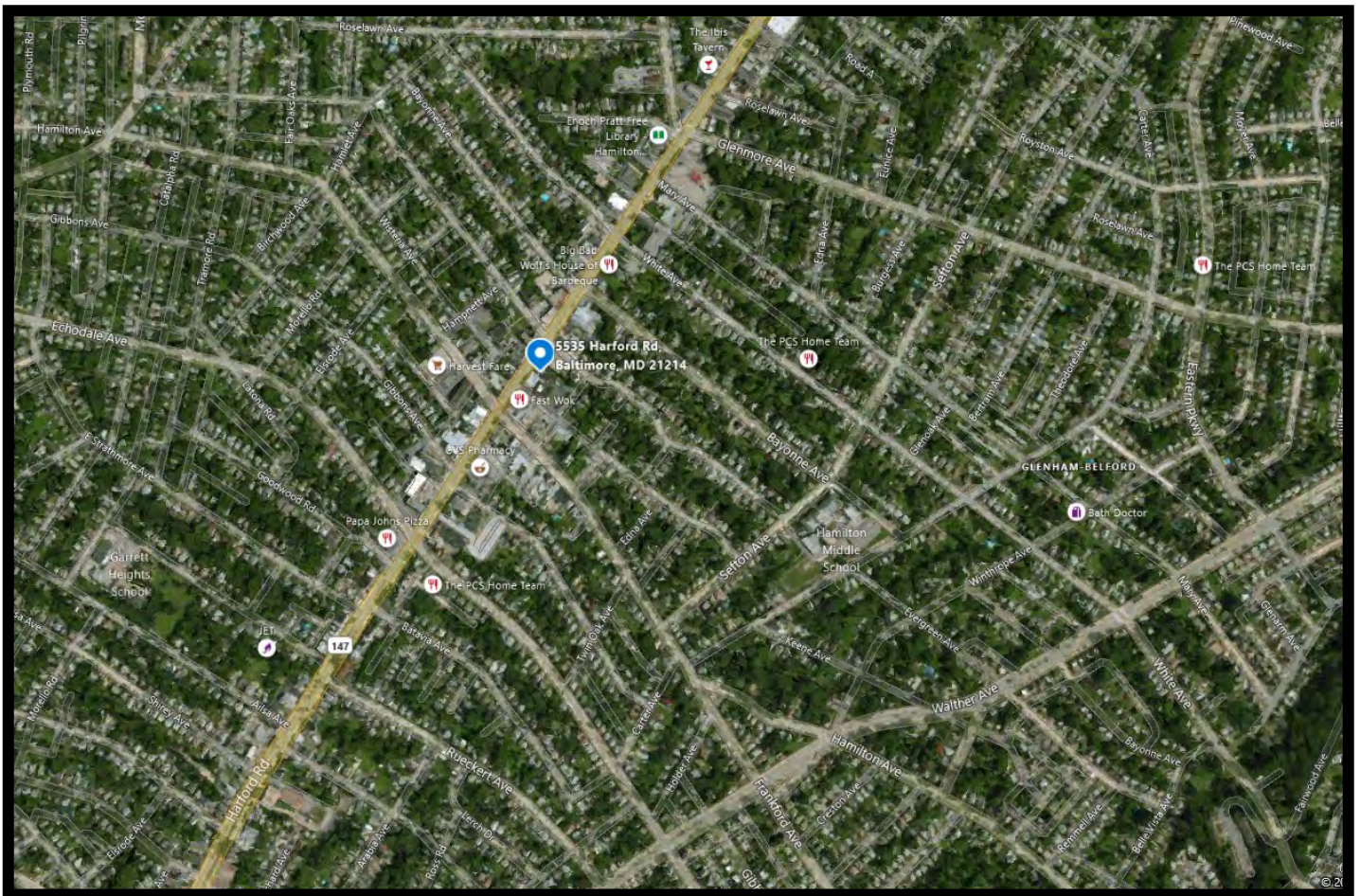


Gold And Company

Commercial Real Estate in the Baltimore Metropolitan Area

5535 Harford Rd. Baltimore, MD 21214

MAP



Jim Chivers
Gold And Company, LLC
5601 Newbury St.
Baltimore, MD 21209

410.578.1300 (Office)

www.goldcommercial.net