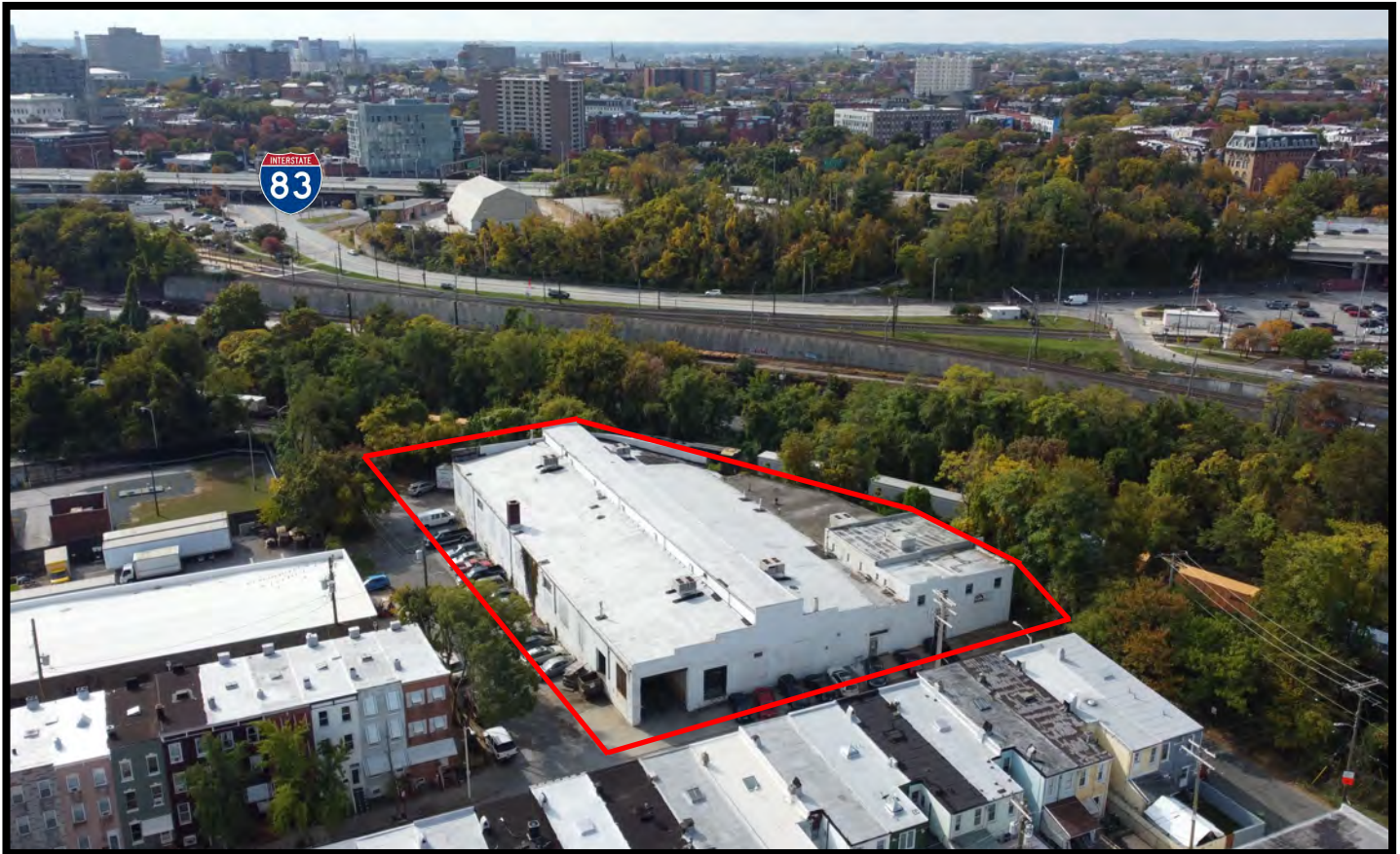




GOLD AND COMPANY, LLC

WWW.GOLDCOMMERCIAL.NET

Commercial Real Estate in the Baltimore Metropolitan Area



501 W. 23rd St. Baltimore, MD 21211

**Gold And
Company, LLC**

**5601 Newbury St.
Baltimore, MD 21209**

**Jim Chivers
443.928.7522 cell
jim@goldcommercial.net
www.goldcommercial.net**

- **+/- 33,000 sf Warehouse AVAILABLE**
- **I-1 Zoning—Baltimore City Industrial**
- **Remington Industrial Submarket**
- **Located in a HUB Zone**
- **Heavy Power**
- **Interior Dock Platform Loading and Drive-In Door**
- **Centrally Located in Baltimore City**
- **Near I-83**
- **Ideal for Owner / User or Redevelopment**
- **Call For More Information**

This property offering is subject to change without notice. All information is deemed reliable but not guaranteed.

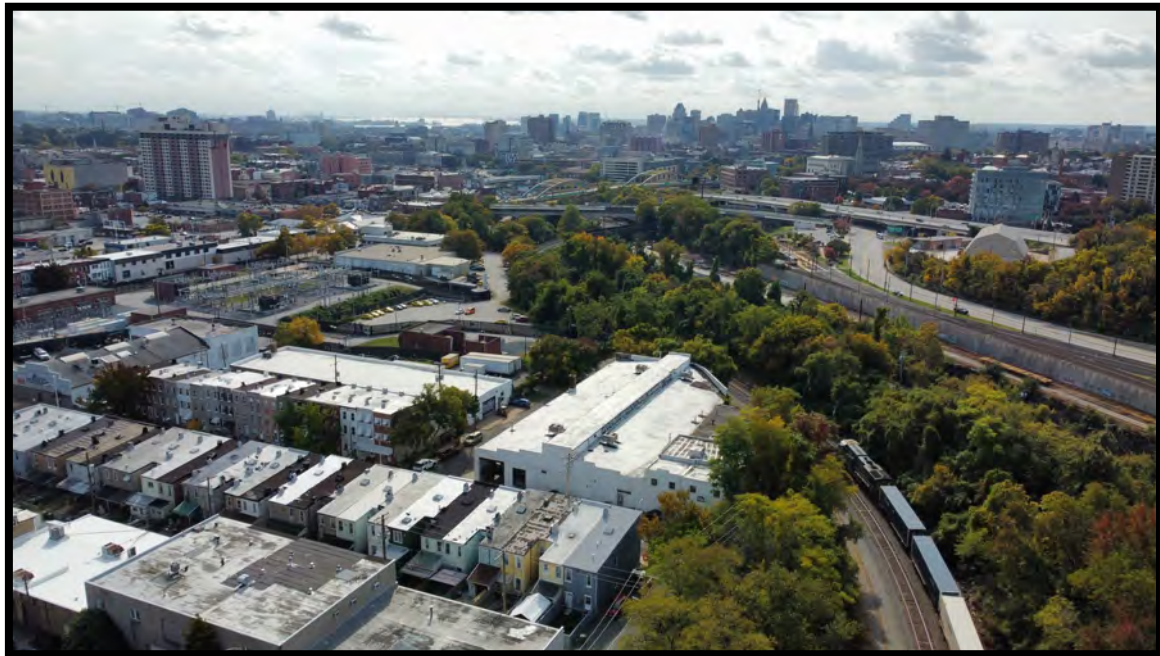


Gold And Company

Commercial Real Estate in the Baltimore Metropolitan Area

501 W. 23rd St. Baltimore, MD 21211

Additional Pictures



Jim Chivers
Gold And Company, LLC
5601 Newbury St.
Baltimore, MD 21209

410.578.1300 (Office)

www.goldcommercial.net

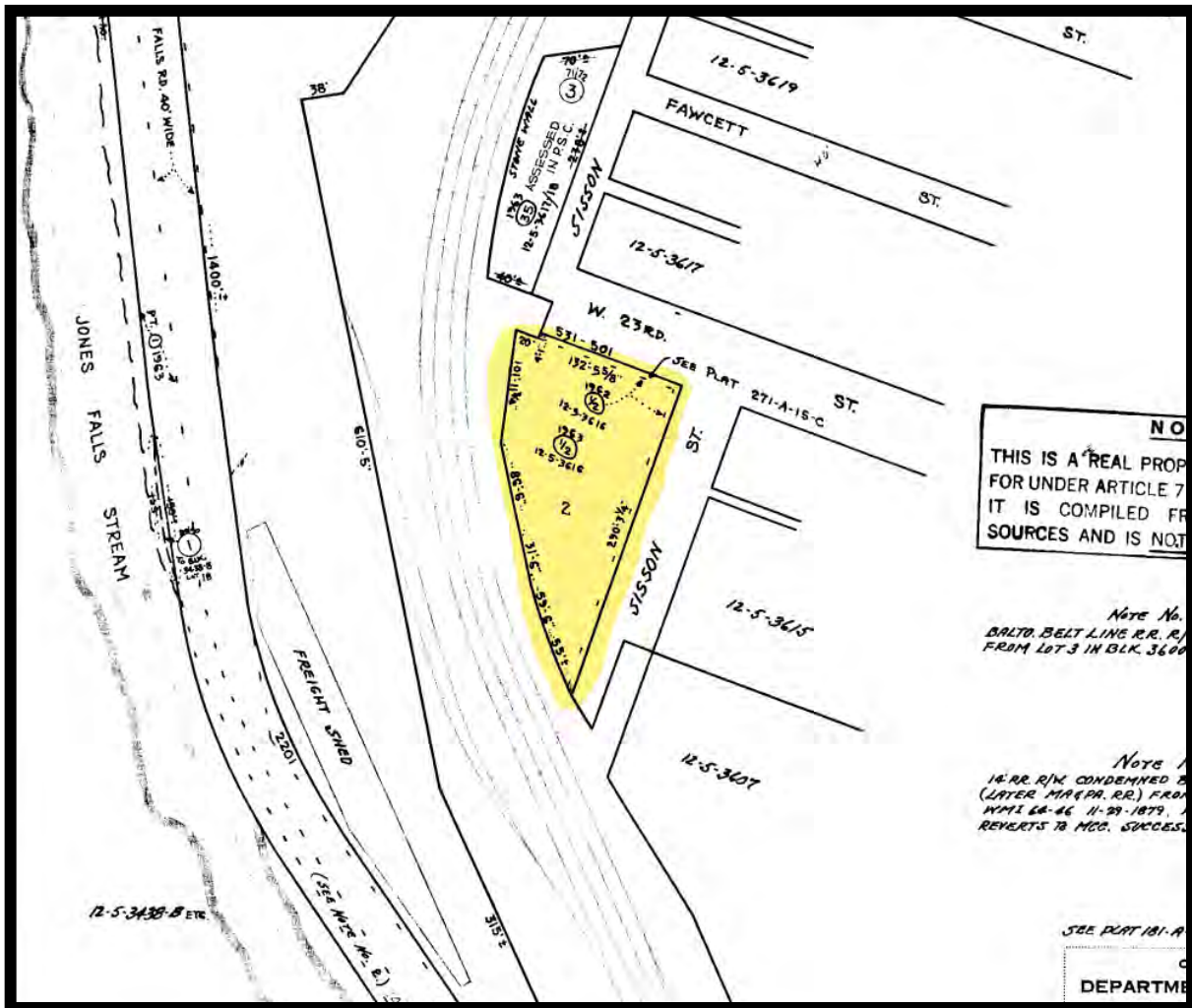


Gold And Company

Commercial Real Estate in the Baltimore Metropolitan Area

501 W. 23rd St. Baltimore, MD 21211

Baltimore City Block Map



Jim Chivers
Gold And Company, LLC
5601 Newbury St.
Baltimore, MD 21209

410.578.1300 (Office)

www.goldcommercial.net



Gold And Company

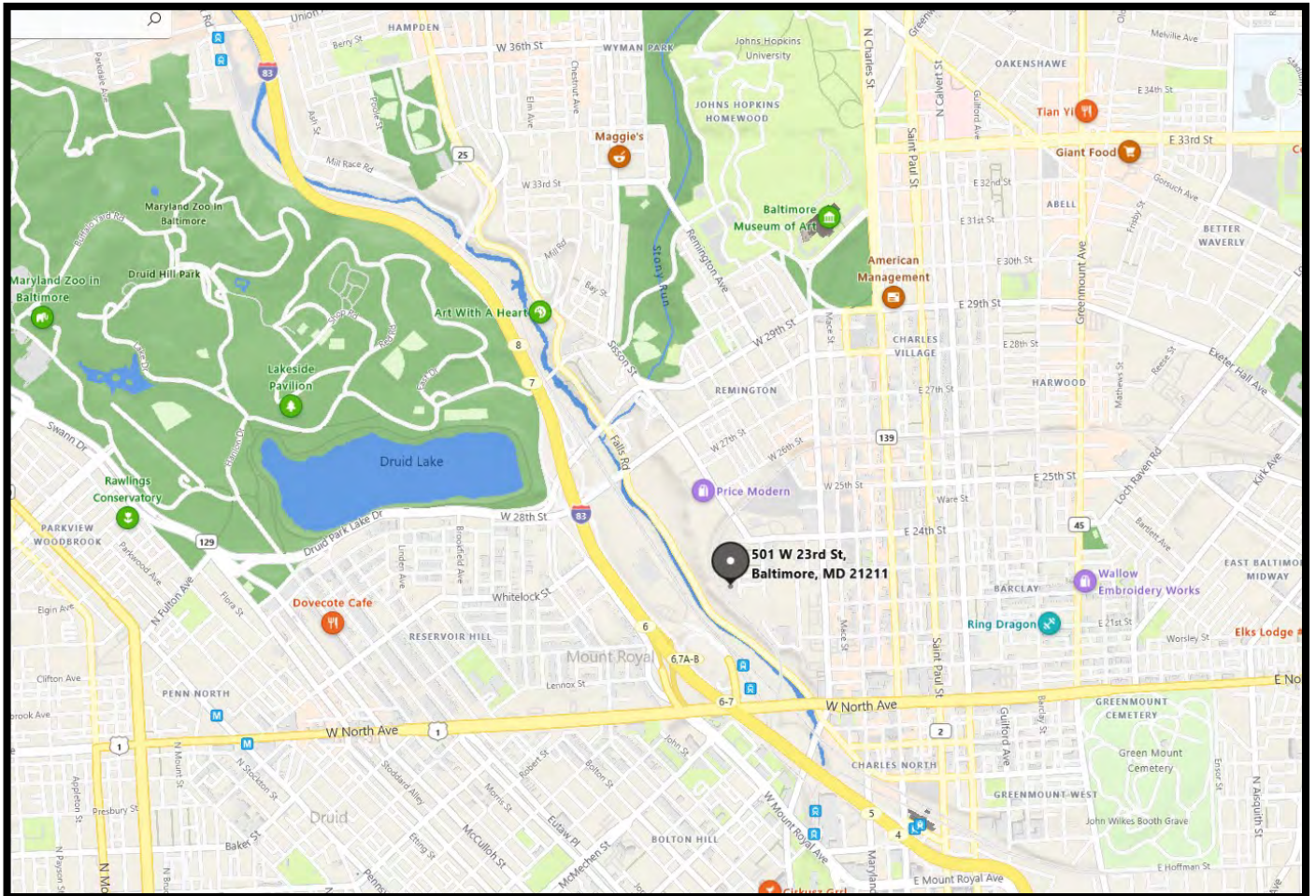
Commercial Real Estate in the Baltimore Metropolitan Area

Jim Chivers: 410.578.1300

jim@goldcommercial.net

501 W. 23rd St. Baltimore, MD 21211

Location Map



Jim Chivers
Gold And Company, LLC
5601 Newbury St.
Baltimore, MD 21209

410.578.1300 (Office)

www.goldcommercial.net