



GOLD AND COMPANY, LLC

WWW.GOLDCOMMERCIAL.NET

Commercial Real Estate in the Baltimore Metropolitan Area



201-207 S. Central Ave. Baltimore, MD 21202

Gold And Company, LLC

**5601 Newbury St.
Baltimore, MD 21209**

**Jim Chivers
443.928.7522 cell
jim@goldcommercial.net
www.goldcommercial.net**

- **+/- 18,000 sf Buildings Available FOR SALE**
- **Central Ave. Core Industrial Submarket**
- **Crane Served / 5 Ton Crane**
- **Located in a Qualified Opportunity and HUB Zone**
- **Heavy Power**
- **2 Parcels**
- **Rear Oversized Drive-In Door**
- **Near Baltimore City's New Major Redevelopments**
- **At the Intersection of E. Pratt and S. Central Ave.**
- **Ideal for Owner / User or Redevelopment**
- **Call For More Information**

This property offering is subject to change without notice. All information is deemed reliable but not guaranteed.



Gold And Company

Commercial Real Estate in the Baltimore Metropolitan Area

201-207 S. Central Ave. Baltimore, MD

Additional Aerial



Jim Chivers
Gold And Company, LLC
5601 Newbury St.
Baltimore, MD 21209

410.578.1300 (Office)

www.goldcommercial.net

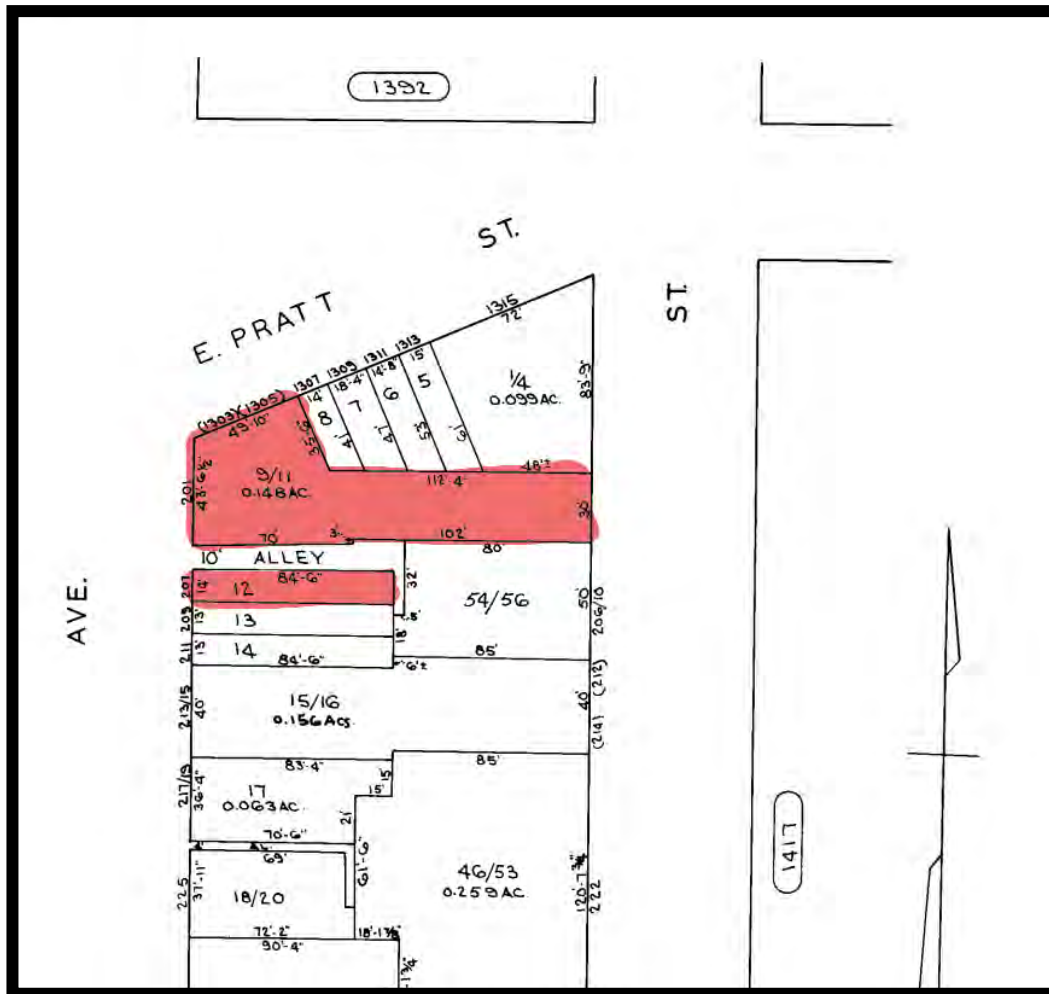


Gold And Company

Commercial Real Estate in the Baltimore Metropolitan Area

201-207 S. Central Ave. Baltimore, MD

Baltimore City Block Map



Jim Chivers
Gold And Company, LLC
5601 Newbury St.
Baltimore, MD 21209

410.578.1300 (Office)

www.goldcommercial.net



Gold And Company

Commercial Real Estate in the Baltimore Metropolitan Area

Jim Chivers: 410.578.1300

jim@goldcommercial.net

201-207 S. Central Ave. Baltimore, MD

Location Map



© 2022 Microsoft Corporation. © 20

Jim Chivers
Gold And Company, LLC
5601 Newbury St.
Baltimore, MD 21209

410.578.1300 (Office)

www.goldcommercial.net