



# GOLD AND COMPANY, LLC

WWW.GOLDCOMMERCIAL.NET

*Commercial Real Estate in the Baltimore Metropolitan Area*



## **1642 Beason St. Baltimore, MD 21230**

### **Gold And Company, LLC**

**5601 Newbury St.  
Baltimore, MD 21209**

**Jim Chivers  
443.928.7522 cell  
jim@goldcommercial.net**

**www.goldcommercial.net**

- **+/- 8,100 sf Buildings FOR SALE**
- **Located in the Heart of Locust Point**
- **+/- 6,400 sf Land Area**
- **2 Parcels**
- **Drive-In Warehouse w/ Two Story Structure**
- **Ideal for Redevelopment or Owner-User**
- **Adjacent to Silo Point, Near Port Covington and UA Campus**
- **Call For More Information**

This property offering is subject to change without notice. All information is deemed reliable but not guaranteed.

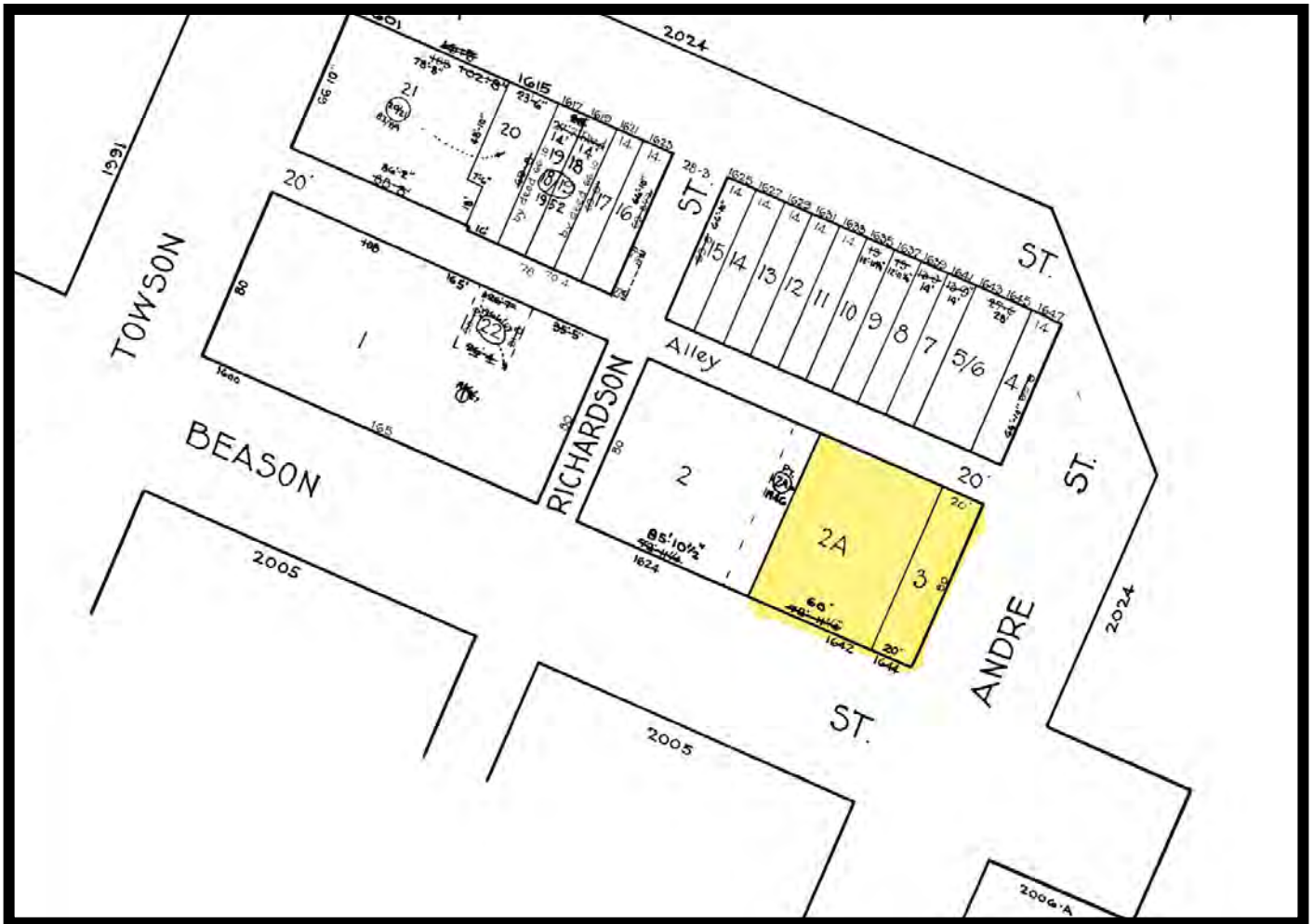


# Gold And Company

Commercial Real Estate in the Baltimore Metropolitan Area

**1642 Beason St. Baltimore, MD 21230**

## Block Map



**Jim Chivers**  
**Gold And Company, LLC**  
**5601 Newbury St.**  
**Baltimore, MD 21209**

**410.578.1300 (Office)**

**[www.goldcommercial.net](http://www.goldcommercial.net)**

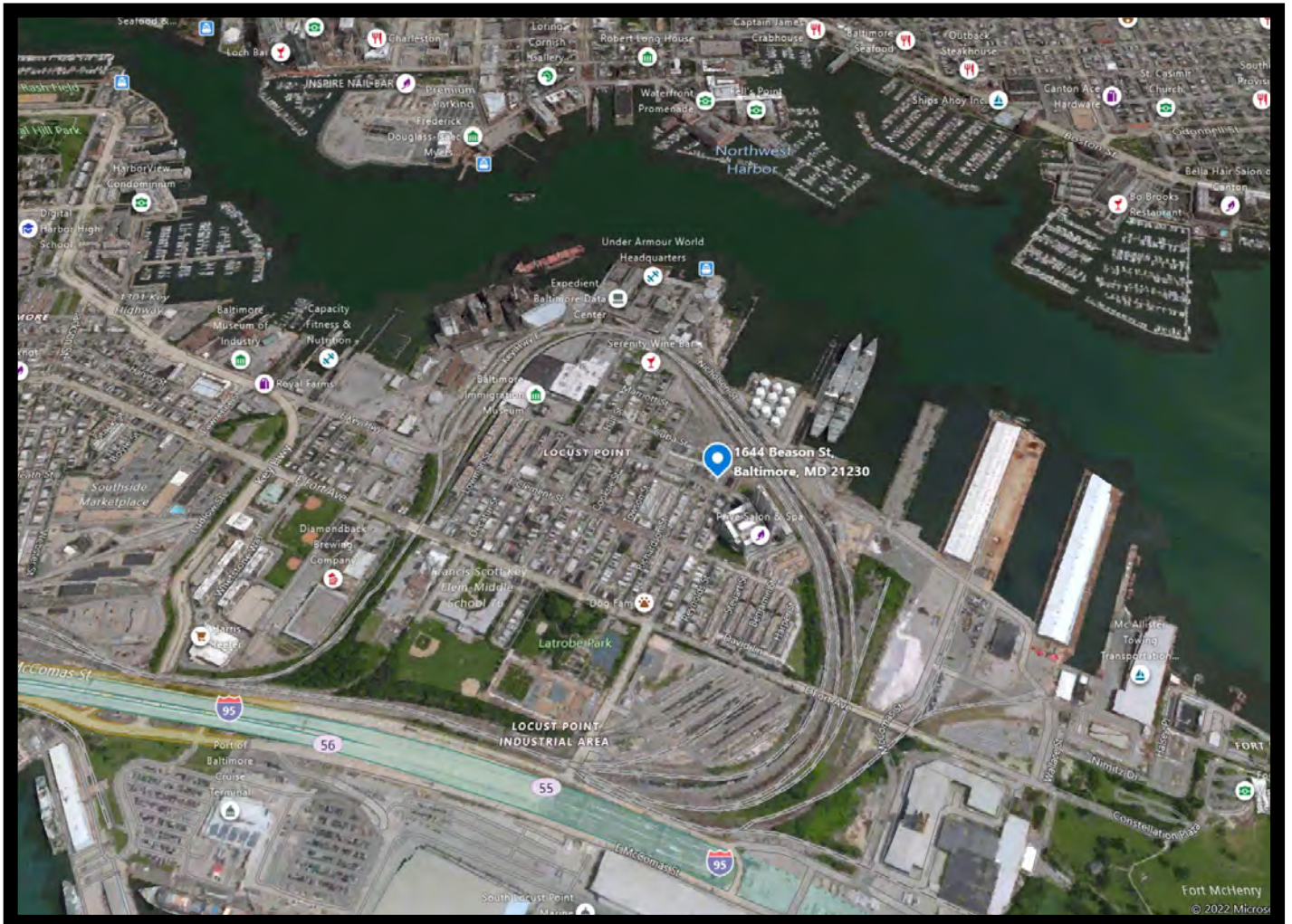


# Gold And Company

*Commercial Real Estate in the Baltimore Metropolitan Area*

**1642 Beason St. Baltimore, MD 21230**

## MAP



**Jim Chivers**  
**Gold And Company, LLC**  
**5601 Newbury St.**  
**Baltimore, MD 21209**

**410.578.1300 (Office)**

**[www.goldcommercial.net](http://www.goldcommercial.net)**