



GOLD AND COMPANY, LLC

WWW.GOLDCOMMERCIAL.NET

Commercial Real Estate in the Baltimore Metropolitan Area



1339 W. Baltimore St. Baltimore, MD 21223

**Gold And
Company, LLC**

**5601 Newbury St.
Baltimore, MD 21209**

For More Information:

**Jim Chivers
443.928.7522 cell
jim@goldcommercial.net**

www.goldcommercial.net

- **+/- 9,800 sf Commercial Building FOR SALE**
- **4 Story Building w/ Basement**
- **C-2 Zoning—Baltimore City**
- **Located at a Signalized Intersection**
- **Elevator Served—Maintained and Inspected**
- **Located Near the Expanding UM Biopark**
- **Ideal for Redevelopment or Owner-User**
- **One Owner since 1907 / Former Littlepages Furniture Store**
- **Adjacent to LifeBridge “The Factory” - New Development**
- **Call For More Information**

This property offering is subject to change without notice. All information is deemed reliable but not guaranteed.

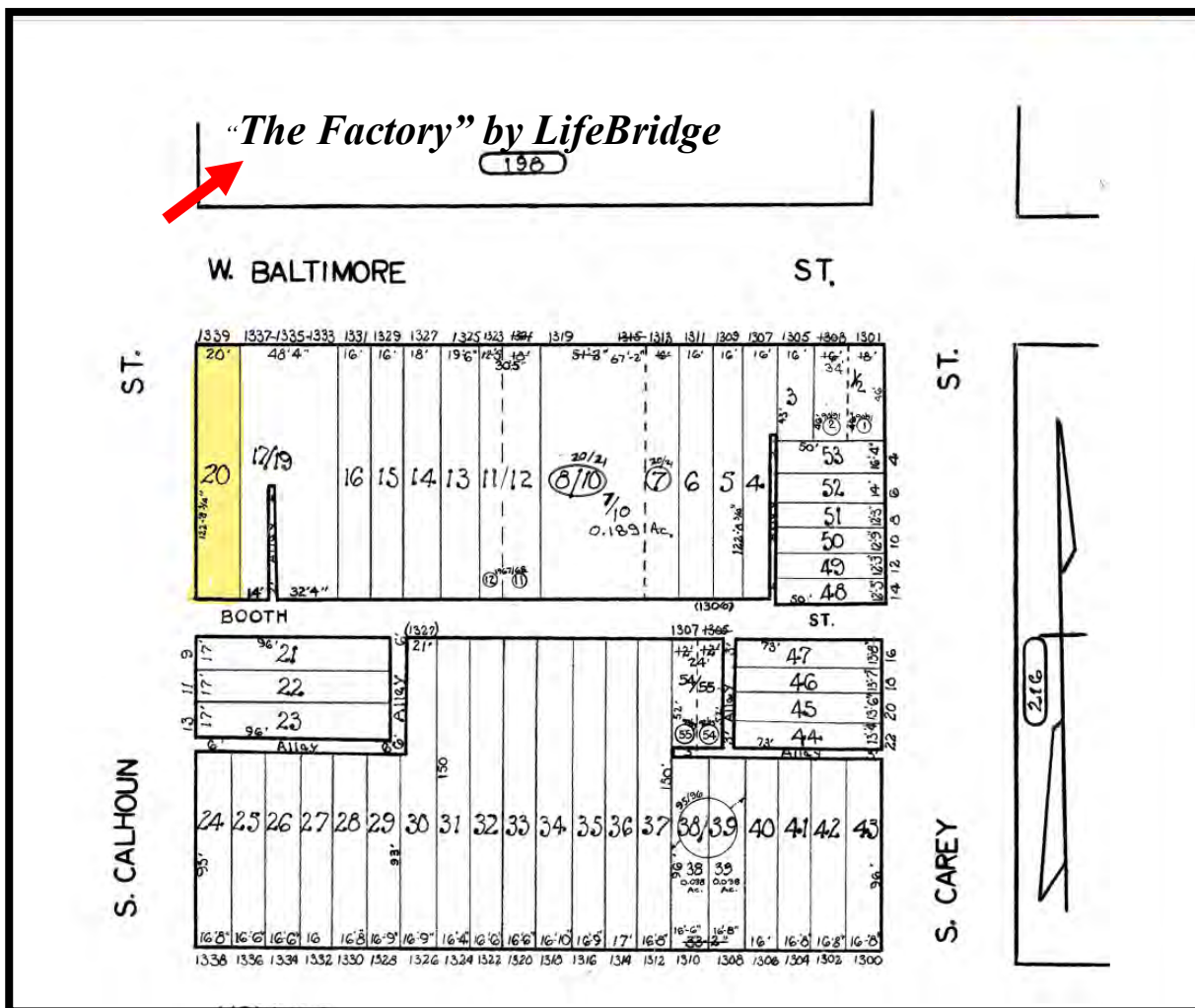


Gold And Company

Commercial Real Estate in the Baltimore Metropolitan Area

1339 W. Baltimore St. Baltimore, MD

Block Map



Jim Chivers
Gold And Company, LLC
5601 Newbury St.
Baltimore, MD 21209

410.578.1300 (Office)

www.goldcommercial.net

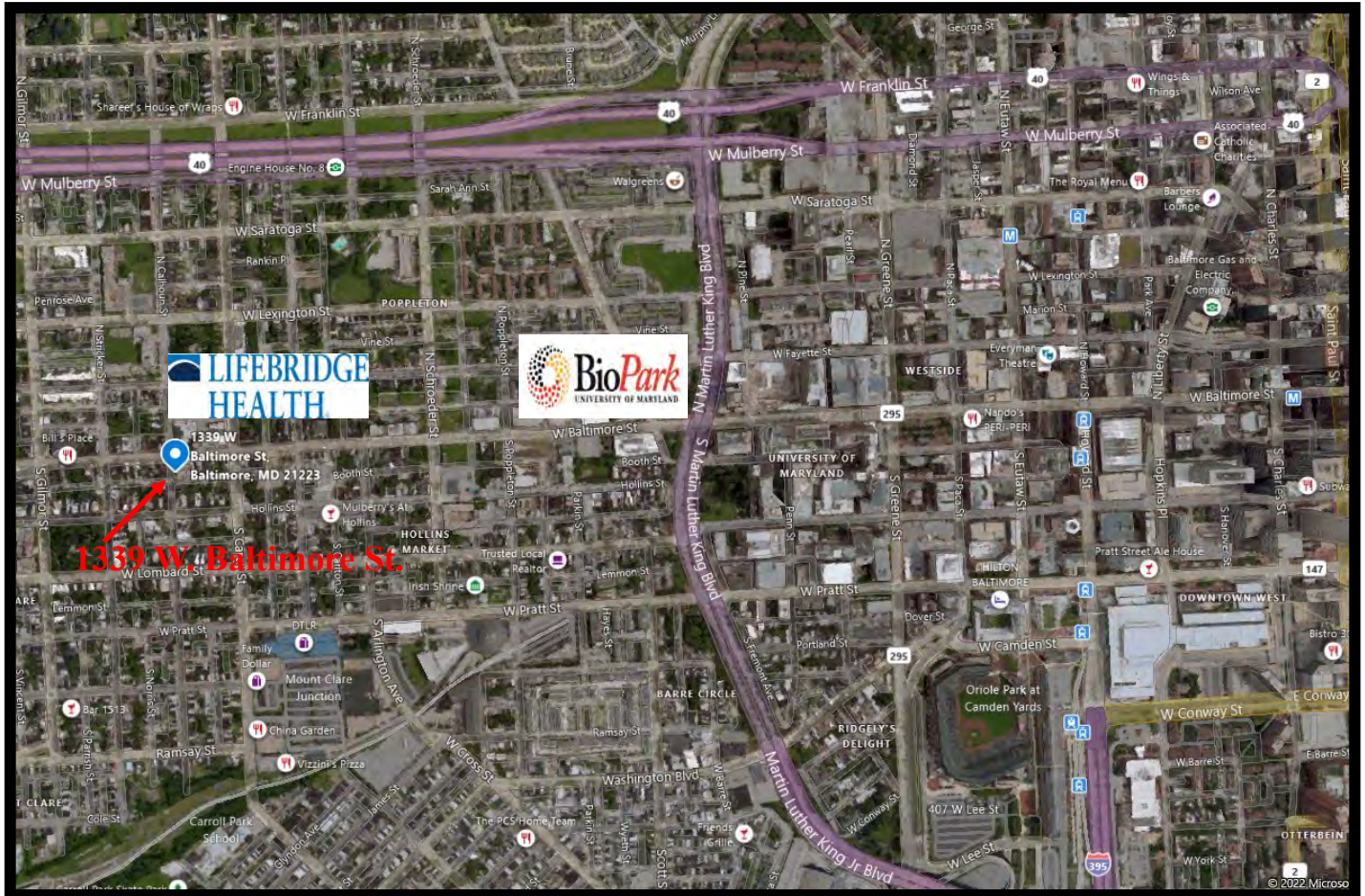


Gold And Company

Commercial Real Estate in the Baltimore Metropolitan Area

1339 W. Baltimore St. Baltimore, MD 21223

MAP



Jim Chivers
Gold And Company, LLC
5601 Newbury St.
Baltimore, MD 21209

410.578.1300 (Office)
www.goldcommercial.net