



GOLD AND COMPANY, LLC



401 N Charles St Baltimore MD 21201

Gold and Company, LLC

**5601 Newbury St.
Baltimore, MD 21209**

**Mike Sontag
443.324.0077
Mike@goldcommercial.net**

**Mitch Gold
410.456.2492
Mitch@goldcommercial.net**

**Office: 410.578.1300
www.goldcommercial.net**

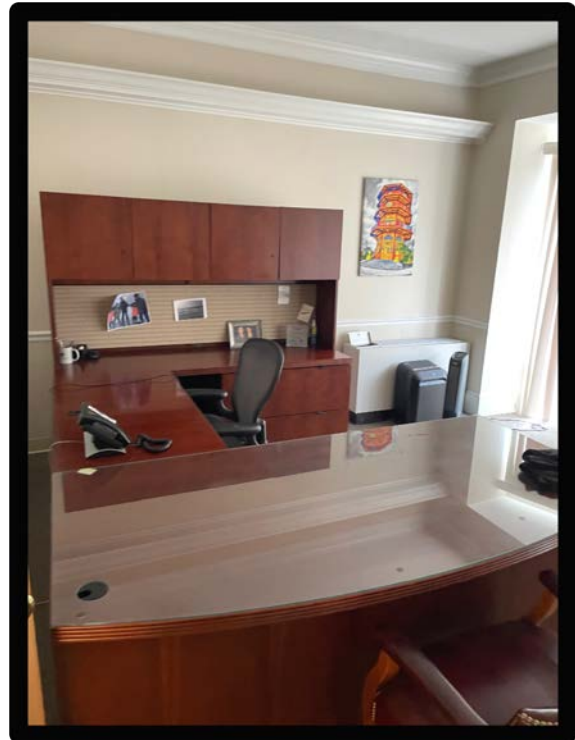
- **Office Property FOR SALE**
- **15,000 SF on four floors**
- **Mt. Vernon End of Group**
- **C-5HT Zoning**
- **Elevator Served Building**
- **Excellent Access to
Downtown**
- **12 Off Street Parking Spaces**



Gold and Company

Commercial Real Estate in the Baltimore Metropolitan Area

401 N Charles St Baltimore MD 21201



**Mike Sontag/ Mitch Gold
Gold and Company, LLC
5601 Newbury St.
Baltimore, MD 21209**

**410.578.1300
www.goldcommercial.net**

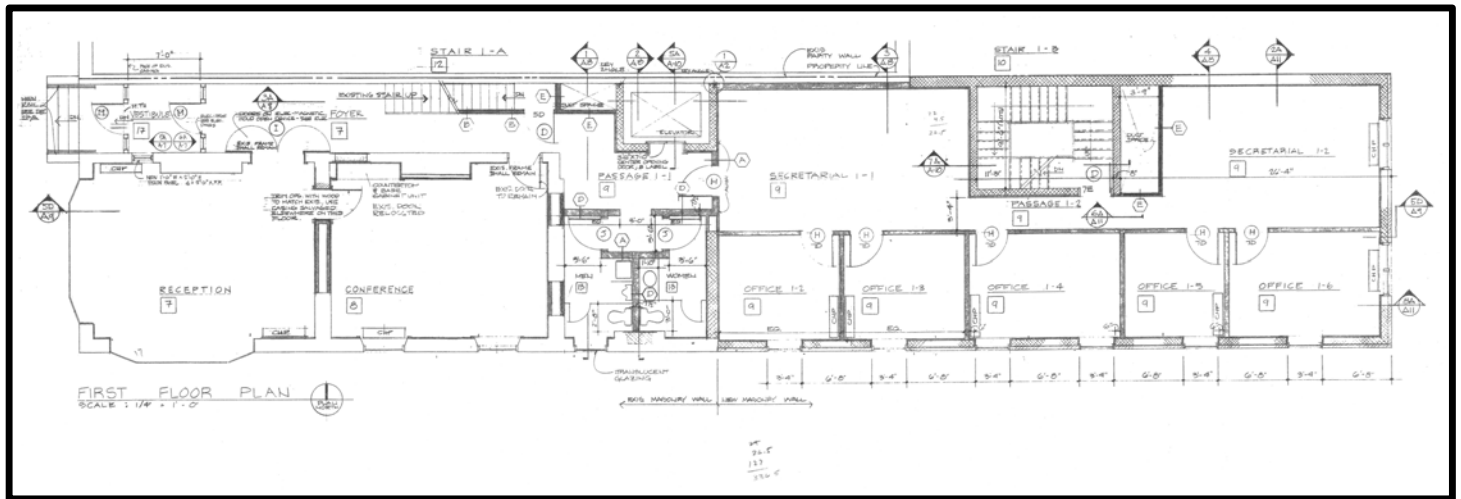


Est. 1999

Gold and Company

Commercial Real Estate in the Baltimore Metropolitan Area

401 N Charles St Baltimore MD 21201



Mike Sontag / Mitch Gold
Gold and Company, LLC
5601 Newbury St.
Baltimore, MD 21209

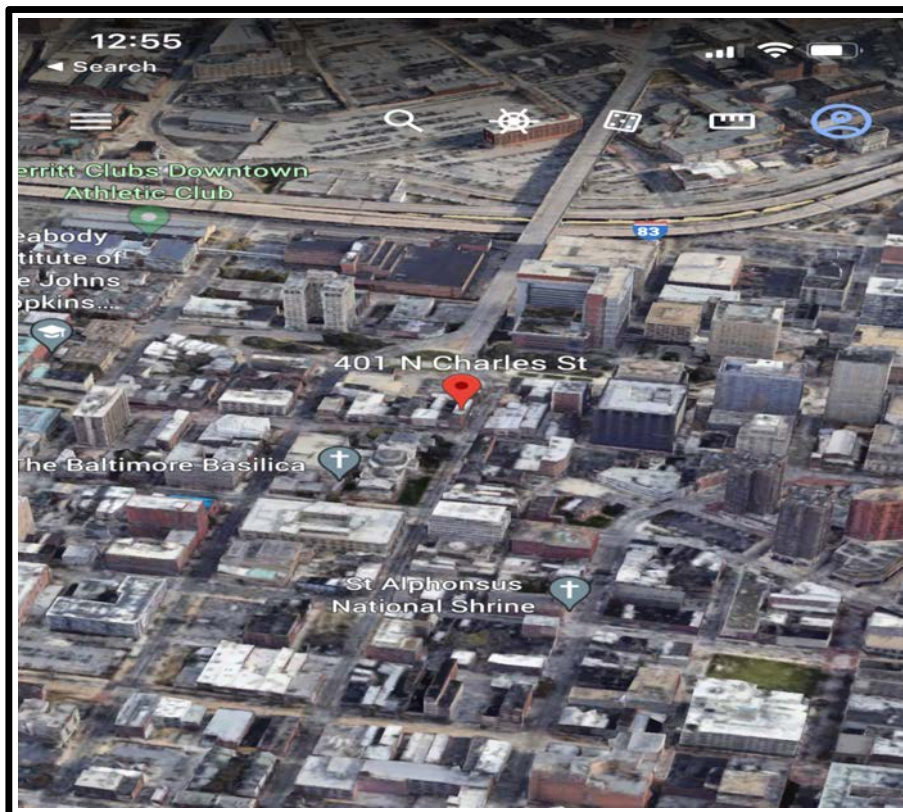
410.578.1300
www.goldcommercial.net



Gold and Company

Commercial Real Estate in the Baltimore Metropolitan Area

401 N Charles St Baltimore MD 21201



Mike Sontag / Mitch Gold
Gold and Company, LLC
5601 Newbury St.
Baltimore, MD 21209

410.578.1300
www.goldcommercial.net