



GOLD AND COMPANY, LLC



107 Mount Carmel Road, Hereford, Maryland 21120

Gold and Company, LLC

**5601 Newbury St.
Baltimore, MD 21209**

**Alex Simone
443.845.4413
Alex@goldcommercial.net**

**Mike Sontag
443.324.0077
Mike@goldcommercial.net**

**Office: 410.578.1300
www.goldcommercial.net**

- **Retail-Office Property Available for Lease**
- **3 units currently available:**
- **1,100 +/- sf restaurant unit**
- **2,200 +/- sf retail-office unit**
 - **Can be combined**
- **1,100 +/- sf retail-office unit**
- **0.5 miles to I-83 exit 27**
- **50 Parking Spaces**
- **\$100,000+ Median HH Income**
 - **Within 1 and 5 miles**



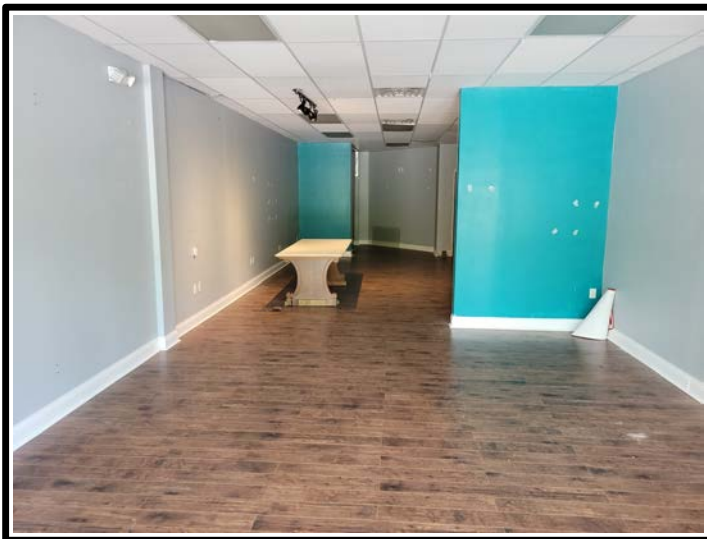
Gold and Company

Commercial Real Estate in the Baltimore Metropolitan Area

107 Mount Carmel Road, Hereford, Maryland 21120



Former Subway Restaurant 1,108 +/- sf



**Shell retail unit
2,216 +/- sf
Combine for 3,326 sf**

**1,108 +/- sf corner unit
available too**

Bring your vision

**Alex Simone / Mike Sontag
Gold and Company, LLC
5601 Newbury St.
Baltimore, MD 21209**

**410.578.1300
www.goldcommercial.net**



Gold and Company

Commercial Real Estate in the Baltimore Metropolitan Area

107 Mount Carmel Road, Hereford, Maryland 21120



Best retail location in the Hereford Zone
Markedly fresher, cleaner air than Baltimore
Call Alex or Mike for more information

Alex Simone / Mike Sontag
Gold and Company, LLC
5601 Newbury St.
Baltimore, MD 21209

410.578.1300
www.goldcommercial.net

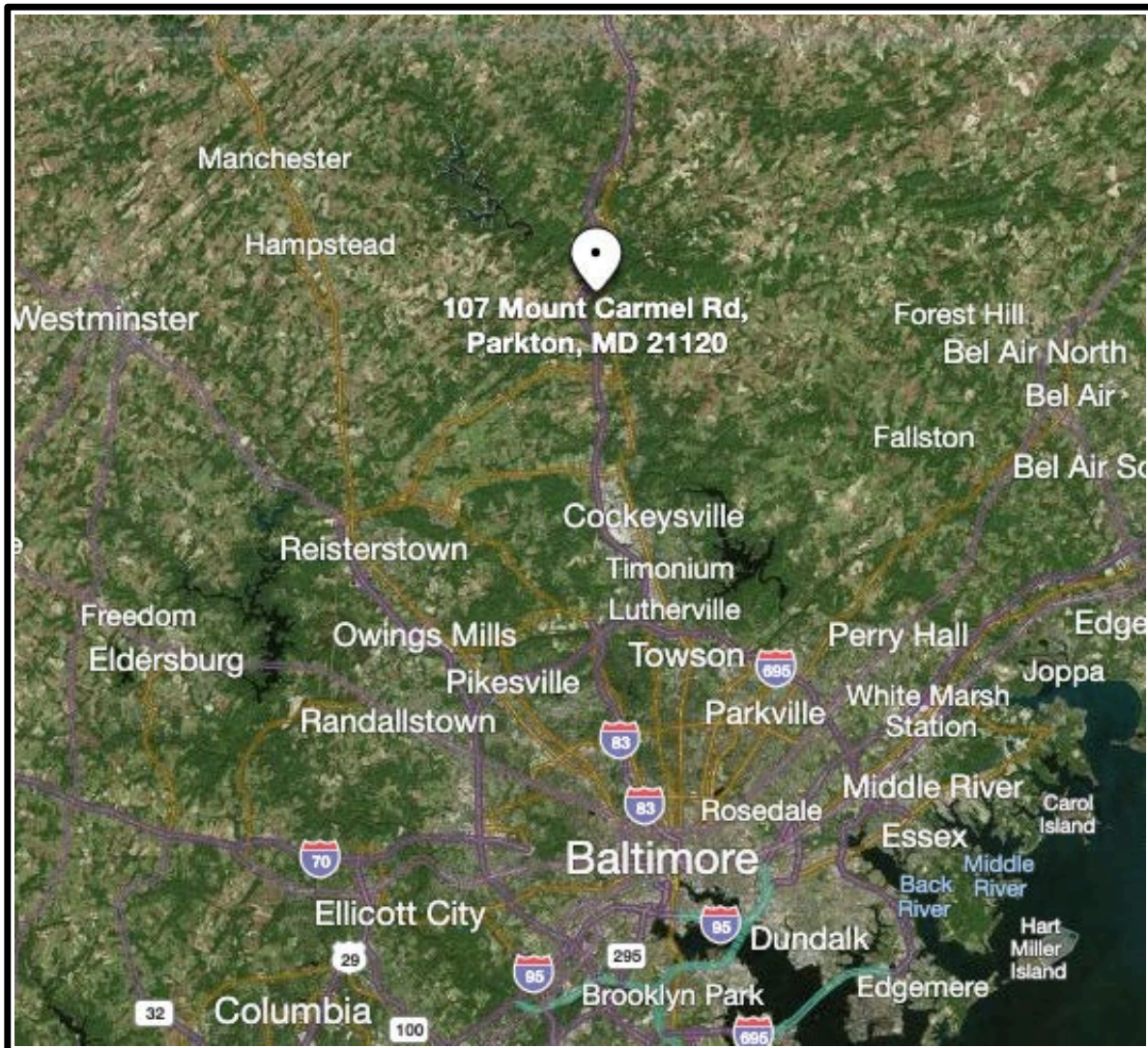


Gold and Company

Commercial Real Estate in the Baltimore Metropolitan Area

Est. 1999

107 Mount Carmel Road, Hereford, Maryland 21120



Alex Simone / Mike Sontag
Gold and Company, LLC
5601 Newbury St.
Baltimore, MD 21209

410.578.1300
www.goldcommercial.net