



GOLD AND COMPANY, LLC



10373-A Reisterstown Rd, Owings Mills, MD 21117

Gold and Company, LLC

**5601 Newbury St.
Baltimore, MD 21209**

**Alex Simone
443.845.4413
Alex@goldcommercial.net**

**Mitch Gold
410.456.2492
Mitch@goldcommercial.net**

**Office: 410.578.1300
www.goldcommercial.net**

- **14,000 +/- sf office available FOR LEASE**
- **Garrison Forest Plaza**
- **Secure entrance to suite**
- **2nd story w/ elevator service**
- **Unreserved parking for 600**
- **Join retail neighbors:**

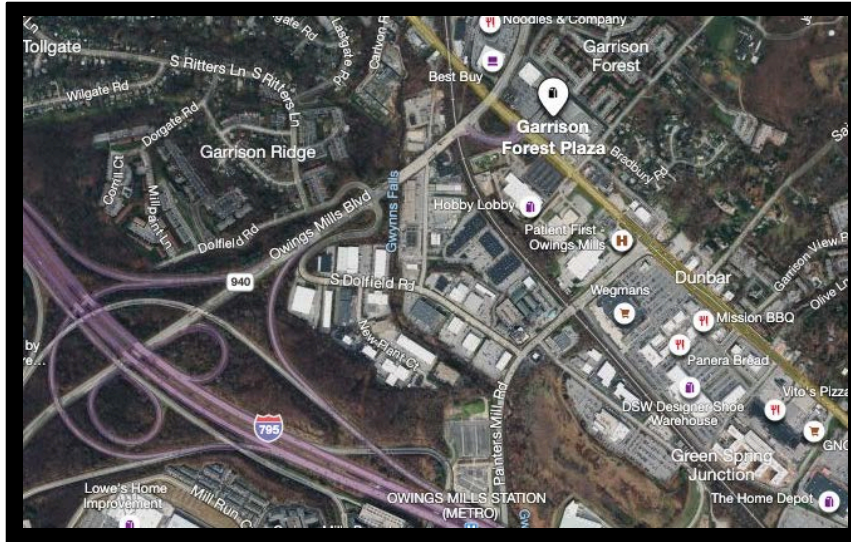




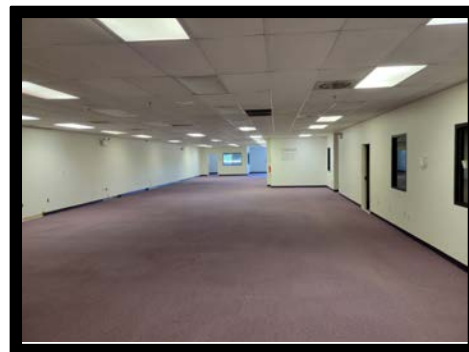
Gold and Company

Commercial Real Estate in the Baltimore Metropolitan Area

10373-A Reisterstown Rd, Owings Mills, MD 21117



- **Closest retail-office shopping center to I-795**
- **Accessible via Reisterstown Road or Owings Mills Blvd**
- **58,000+ cars passing daily from both roads**
- **ADA Accessible**
- **Full array of business and retail services on-site and nearby**
- **Close to Foundry Row, Stevenson U. and the Owings Mills Metro Station**



Alex Simone / Mitch Gold
Gold and Company, LLC
5601 Newbury St.
Baltimore, MD 21209

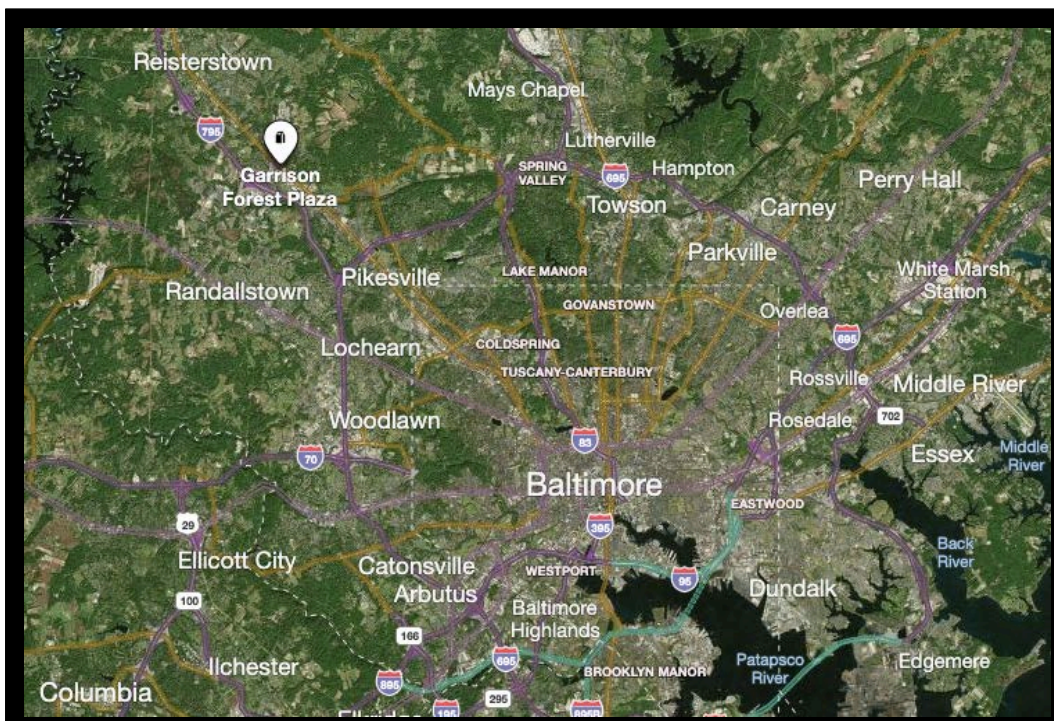
410.578.1300
www.goldcommercial.net



Gold and Company

Commercial Real Estate in the Baltimore Metropolitan Area

10373-A Reisterstown Rd, Owings Mills, MD 21117



- **Demisable to 8,243 square feet**
- **6,000 sf retail coming available in 2023**
- **Excellent daytime employment + consumer spending area**
- **Call for pricing and tour information**

Alex Simone / Mitch Gold
Gold and Company, LLC
5601 Newbury St.
Baltimore, MD 21209

410.578.1300
www.goldcommercial.net