



GOLD AND COMPANY, LLC



4 N. Broadway Ave. Baltimore, MD 21231

Gold And Company, LLC

**5601 Newbury St.
Baltimore, MD 21209**

**Jim Chivers
443.928.7522 cell
jim@goldcommercial.net**

**Mike Sontag
443.324.0077
mike@goldcommercial.net**

www.goldcommercial.net

- **Washington Hill Building Available FOR SALE**
- **+/- 3,000 sf Building**
- **OR-1 Zoning—Baltimore City**
- **Owner User or Development Opportunity**
- **Located in a Qualified Opportunity Zone**
- **One Block South of Johns Hopkins Hospital and Kennedy Krieger Institute**
- **Commercial Kitchen**
- **3 Levels Plus a Basement**
- **Corner Parcel**
- **Call For More Information**

This property offering is subject to change without notice. All information is deemed reliable but not guaranteed.

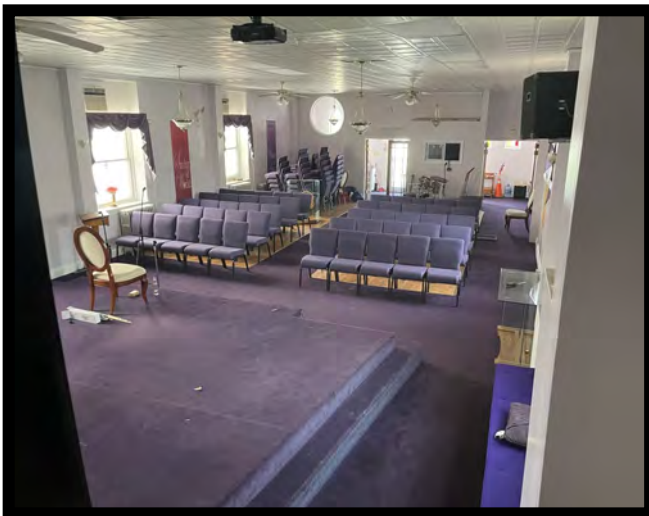
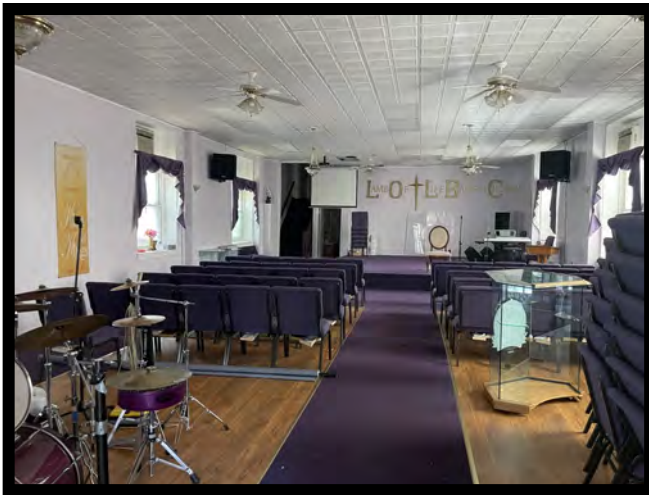


Gold And Company

Commercial Real Estate in the Baltimore Metropolitan Area

4 N. Broadway Ave. Baltimore, MD

Additional Pictures



Jim Chivers / Mike Sontag
Gold And Company, LLC
5601 Newbury St.
Baltimore, MD 21209

410.578.1300 (Office)

www.goldcommercial.net

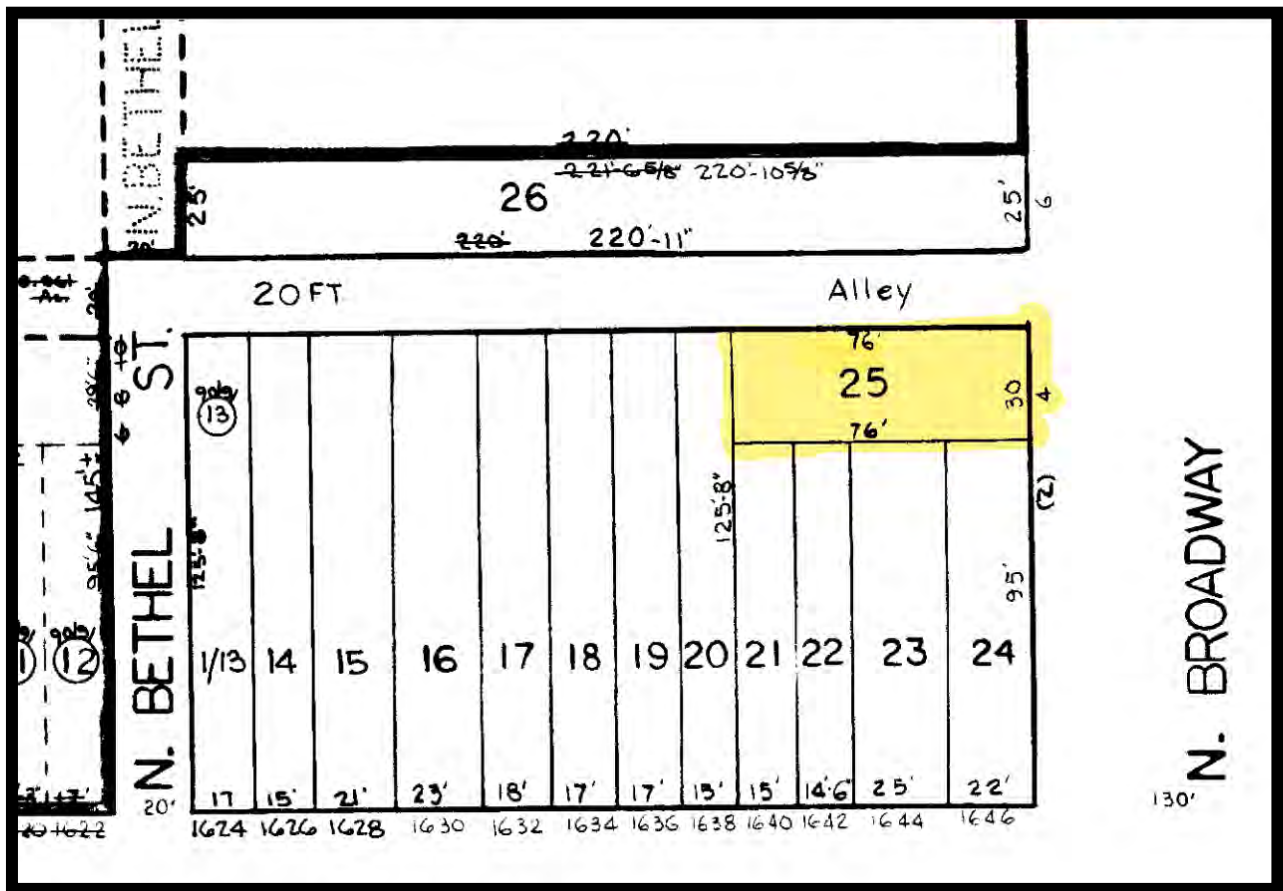


Gold And Company

Commercial Real Estate in the Baltimore Metropolitan Area

4 N. Broadway Ave. Baltimore, MD 21231

Block Map



Jim Chivers / Mike Sontag
Gold And Company, LLC
5601 Newbury St.
Baltimore, MD 21209

410.578.1300 (Office)

www.goldcommercial.net