



# **GOLD AND COMPANY, LLC**



**1120 E Fort Avenue Baltimore MD 21230**

## **Gold and Company, LLC**

**5601 Newbury St.  
Baltimore, MD 21209**

**Mike Sontag  
443.324.0077  
[Mike@goldcommercial.net](mailto:Mike@goldcommercial.net)**

**Mitch Gold  
410.456.2492  
[Mitch@goldcommercial.net](mailto:Mitch@goldcommercial.net)**

**Office: 410.578.1300  
[www.goldcommercial.net](http://www.goldcommercial.net)**

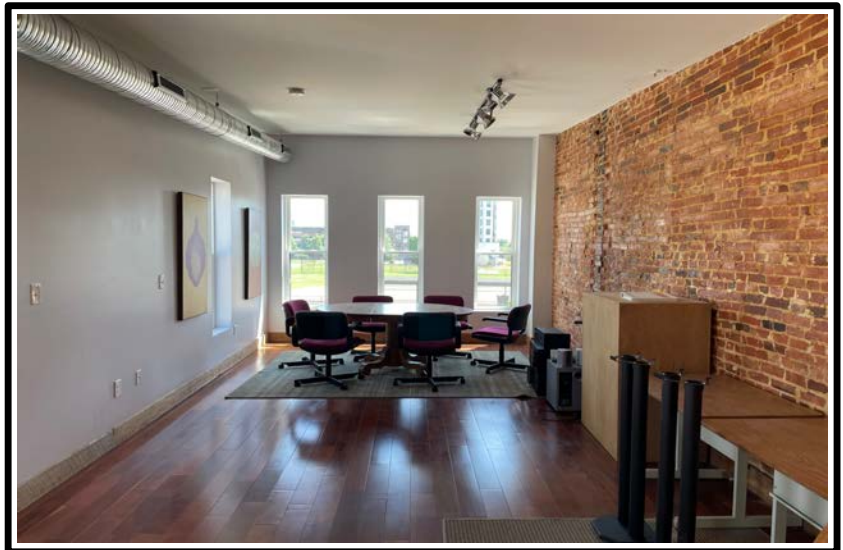
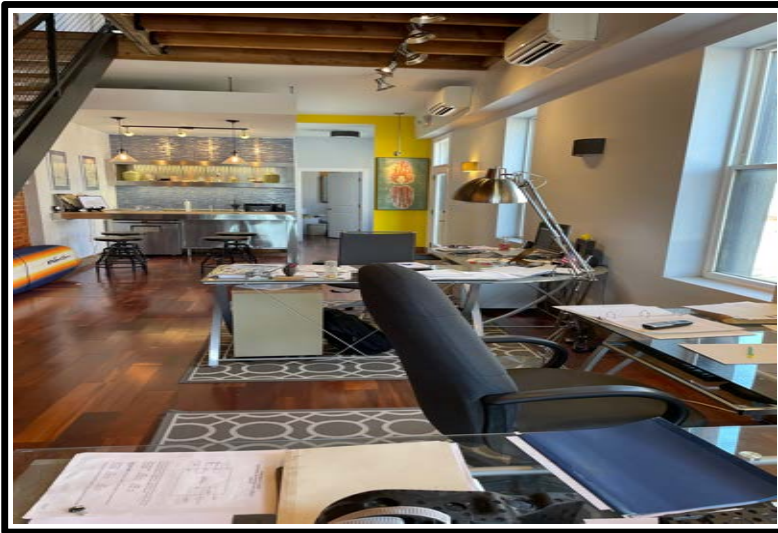
- **Office property FOR SALE**
- **Fully Renovated**
- **Locust Point end of group**
- **R-8 zoning**
- **2,000 +/- sf building**
- **2 stories open concept**
- **Excellent access to  
downtown and I-95**



# Gold and Company

*Commercial Real Estate in the Baltimore Metropolitan Area*

**1120 E Fort Avenue Baltimore MD 21230**



**Mike Sontag/ Mitch Gold  
Gold and Company, LLC  
5601 Newbury St.  
Baltimore, MD 21209**

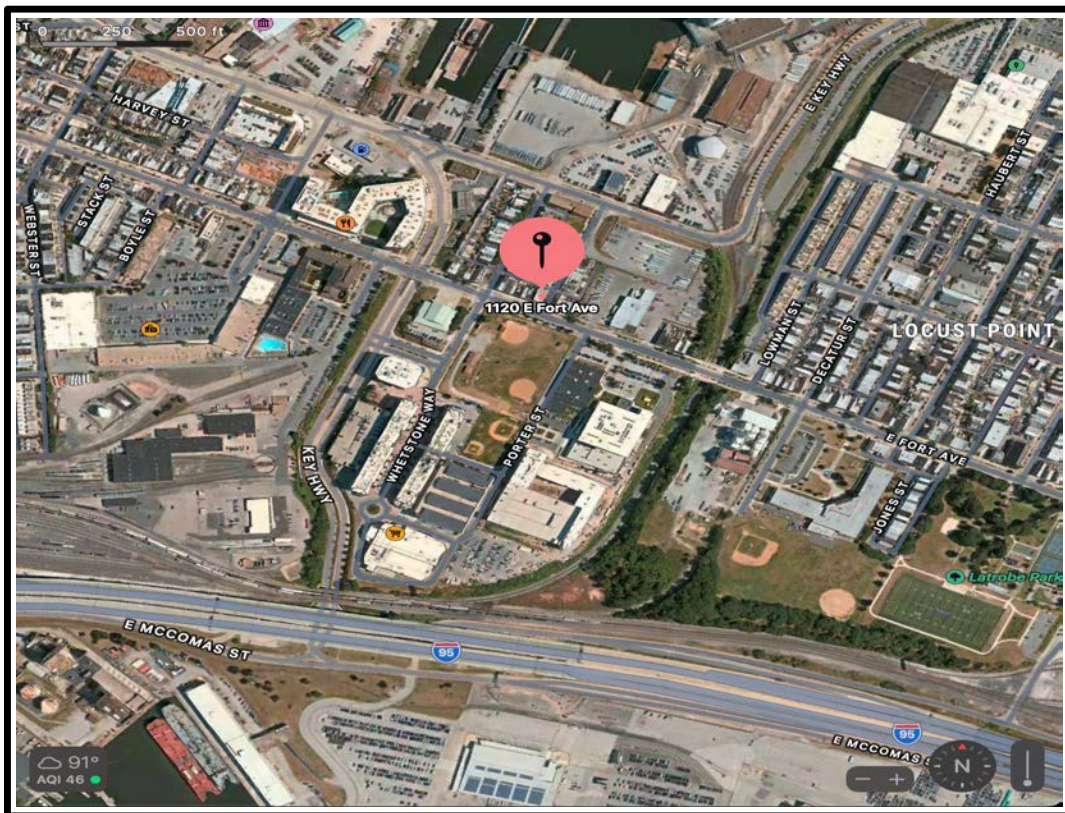
**410.578.1300  
[www.goldcommercial.net](http://www.goldcommercial.net)**



# Gold and Company

*Commercial Real Estate in the Baltimore Metropolitan Area*

**1120 E Fort Avenue Baltimore MD 21230**



**Mike Sontag / Mitch Gold**  
**Gold and Company, LLC**  
**5601 Newbury St.**  
**Baltimore, MD 21209**

**410.578.1300**  
**[www.goldcommercial.net](http://www.goldcommercial.net)**