



GOLD AND COMPANY, LLC



2 Reservoir Circle, Suite 201, Pikesville, MD 21208

Gold and Company, LLC

**5601 Newbury St.
Baltimore, MD 21209**

**Alex Simone
443.845.4413
Alex@goldcommercial.net**

**Mitch Gold
410.456.2492
Mitch@goldcommercial.net**

**Office: 410.578.1300
www.goldcommercial.net**

- **1,200 +/- sf office condo**
- **FOR SALE**
- **3 Private Offices**
- **Quiet, professional park**
- **2nd story – Elevator Serviced**
- **Kitchenette & Restroom**
- **Off Hooks Lane near I-695**
- **Ideal for any professional**
- **\$430 monthly condo fee covers all outdoor and roof maintenance**

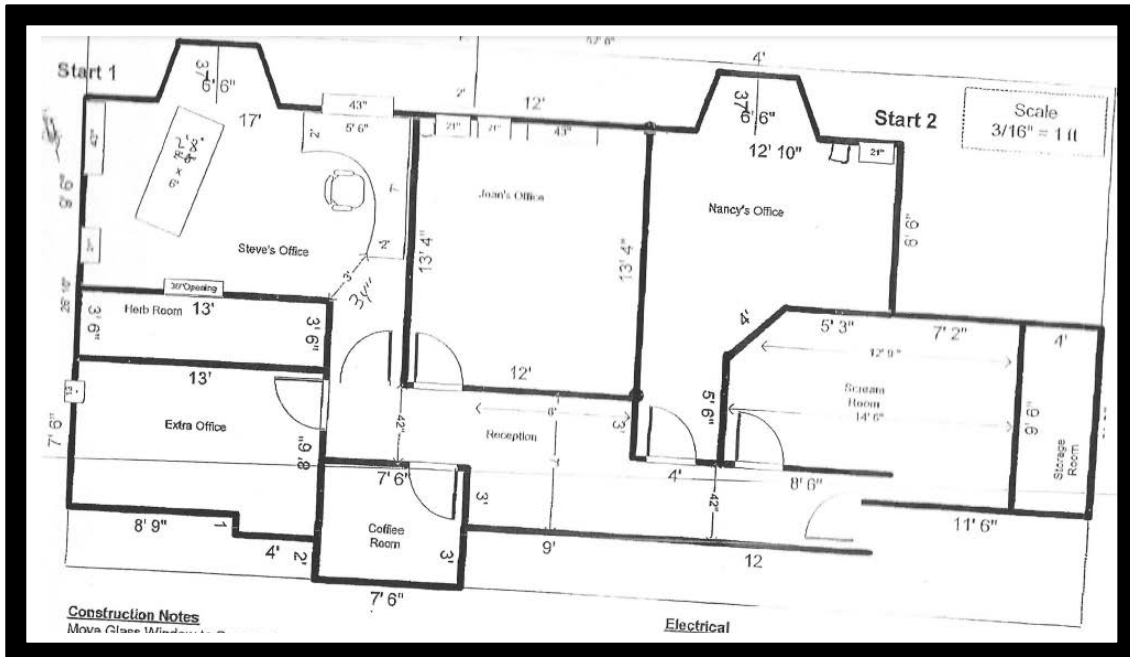
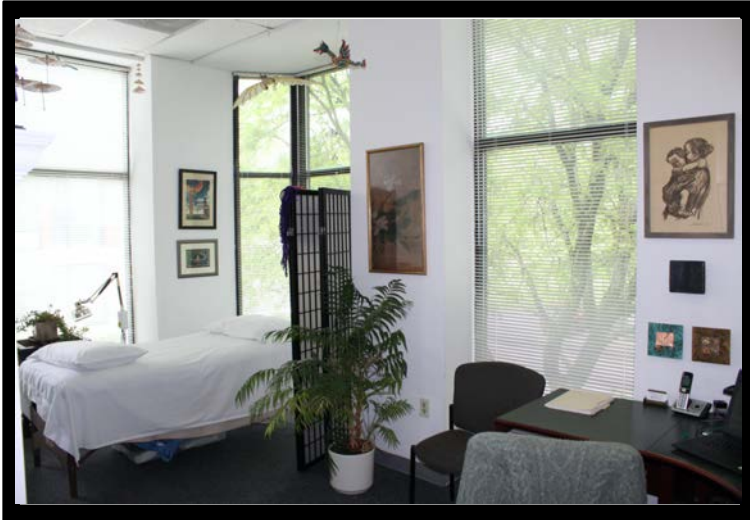


Est. 1999

Gold and Company

Commercial Real Estate in the Baltimore Metropolitan Area

2 Reservoir Circle, Suite 201, Pikesville, MD 21208



Alex Simone / Mitch Gold
Gold and Company, LLC
5601 Newbury St.
Baltimore, MD 21209

410.578.1300
www.goldcommercial.net

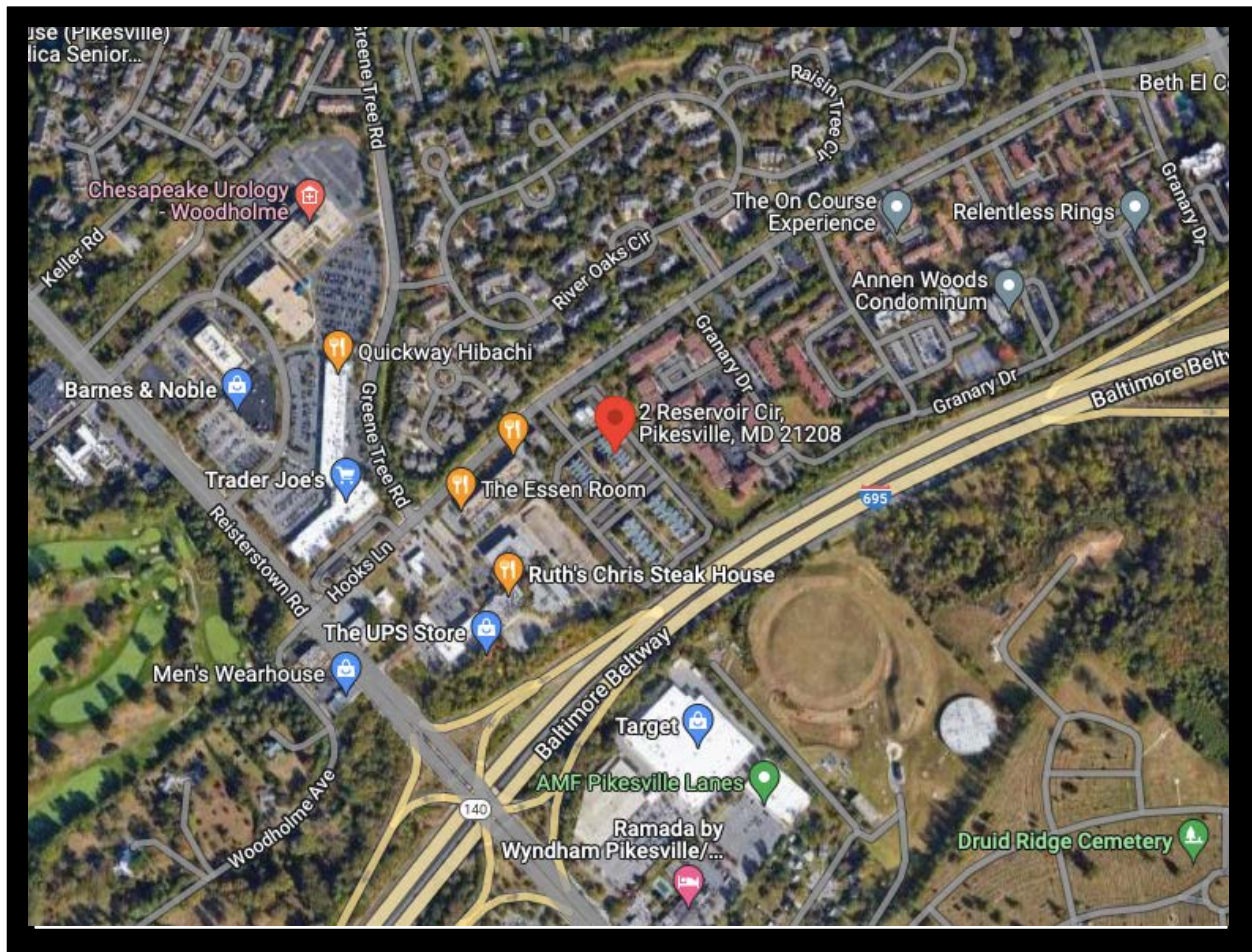


Est. 1999

Gold and Company

Commercial Real Estate in the Baltimore Metropolitan Area

2 Reservoir Circle, Suite 201, Pikesville, MD 21208



Alex Simone / Mitch Gold
Gold and Company, LLC
5601 Newbury St.
Baltimore, MD 21209

410.578.1300
www.goldcommercial.net