



# GOLD AND COMPANY, LLC

WWW.GOLDCOMMERCIAL.NET

*Commercial Real Estate in the Baltimore Metropolitan Area*



## **1200 and 1210 N. Macon St. Baltimore 21205**

### **Gold And Company, LLC**

**5601 Newbury St.  
Baltimore, MD 21209**

**Jim Chivers  
443.928.7522 cell  
jim@goldcommercial.net**

**www.goldcommercial.net**

- **Industrial Properties Available FOR SALE**
- **2 Parcels**
- **1210 N. Macon St.**
  - **+/- 9,000 sf / Drive-In Access / Currently Vacant**
- **1200 N. Macon St.**
  - **+/- 8,000 sf / Drive-In and Dock / Currently Leased**
- **+/- 17,000 sf in Two Buildings**
- **0.87 acre in Two Parcels**
- **I-2 Zoning (Heavy Industrial—Baltimore City)**
- **Heavy Power**
- **Located in a Qualified Hub Zone and Enterprise Zone**
- **New Roof and Recent Improvements**

This property offering is subject to change without notice. All information is deemed reliable but not guaranteed.

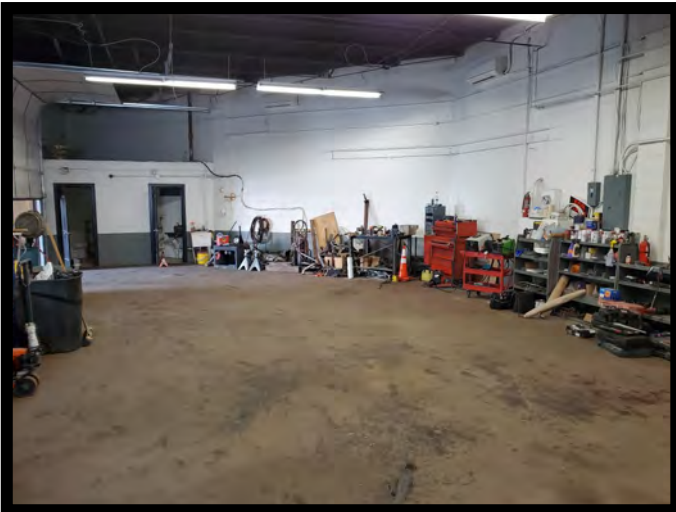


# Gold And Company

*Commercial Real Estate in the Baltimore Metropolitan Area*

## **1200 and 1210 N. Macon St. Baltimore**

Additional Pictures of 1210 N Macon St.



**Jim Chivers**  
**Gold And Company, LLC**  
**5601 Newbury St.**  
**Baltimore, MD 21209**

**410.578.1300 (Office)**

**[www.goldcommercial.net](http://www.goldcommercial.net)**

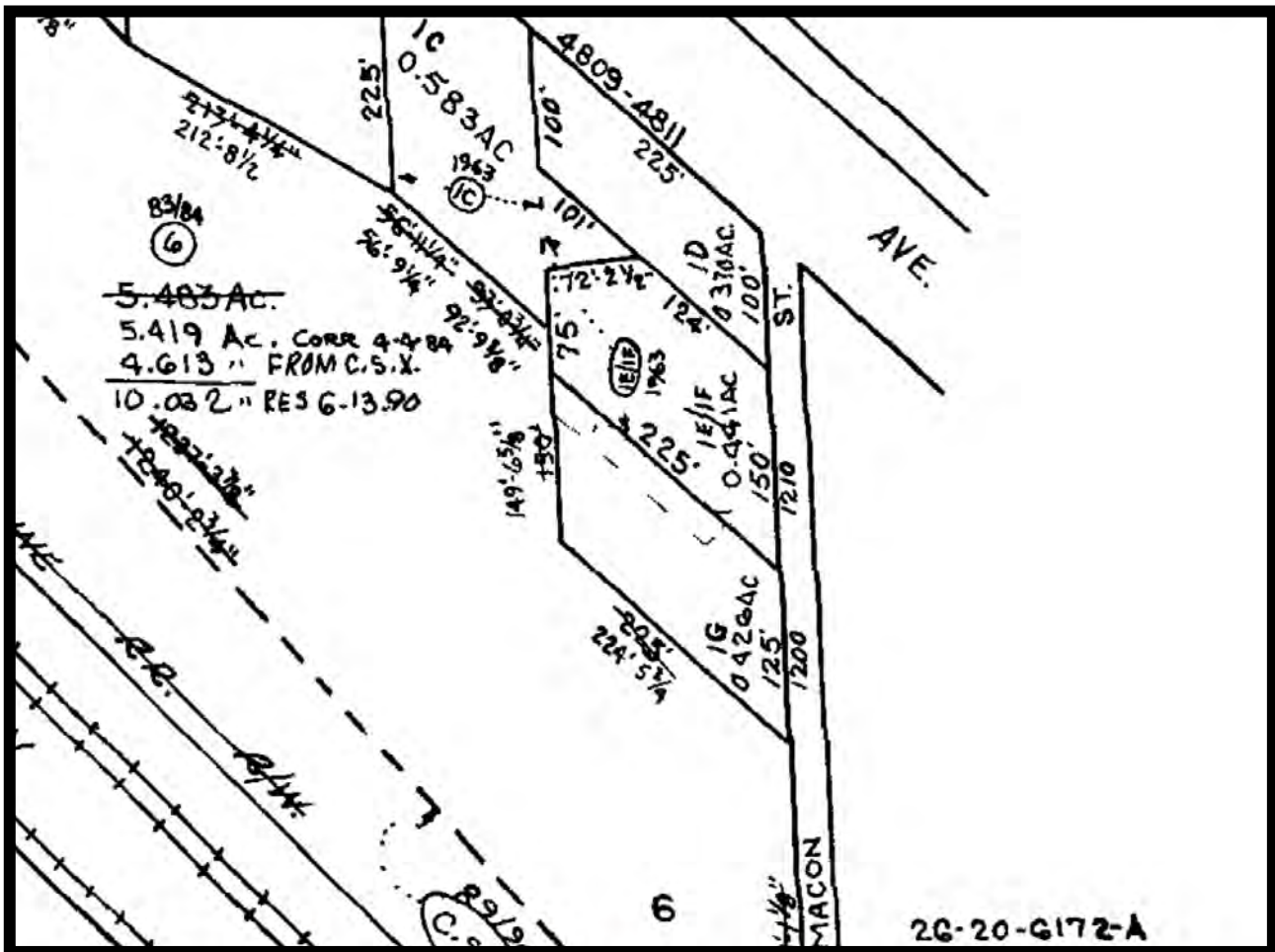


# Gold And Company

Commercial Real Estate in the Baltimore Metropolitan Area

## 1200 and 1210 N. Macon St. Baltimore

### Baltimore City Block Map Lot 1E/F and 1G



Jim Chivers  
Gold And Company, LLC  
5601 Newbury St.  
Baltimore, MD 21209

410.578.1300 (Office)

[www.goldcommercial.net](http://www.goldcommercial.net)

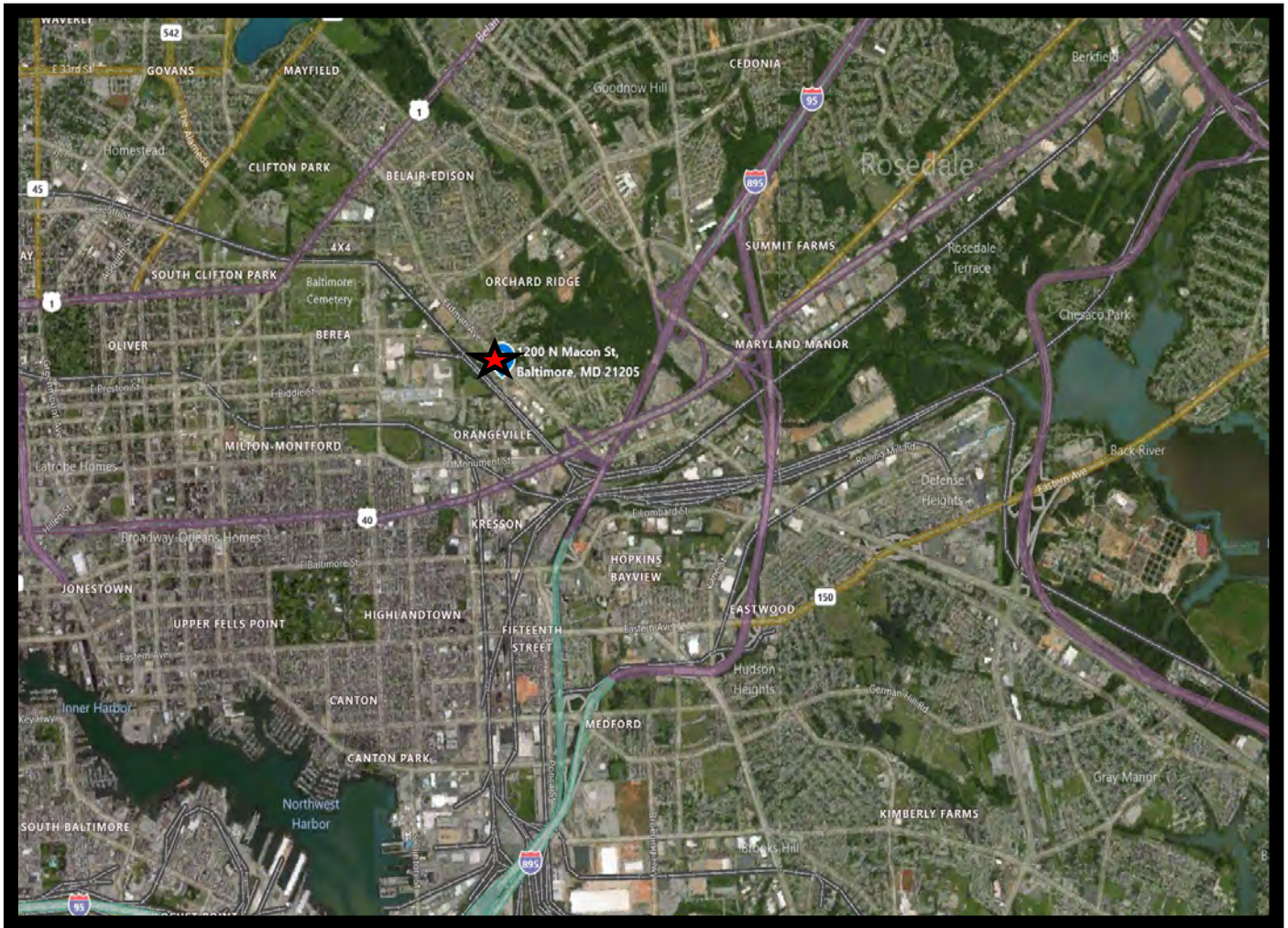


# Gold And Company

*Commercial Real Estate in the Baltimore Metropolitan Area*

## **1200 and 1210 N. Macon St. Baltimore**

### **MAP**



**Jim Chivers**  
**Gold And Company, LLC**  
**5601 Newbury St.**  
**Baltimore, MD 21209**

**410.578.1300 (Office)**

**[www.goldcommercial.net](http://www.goldcommercial.net)**