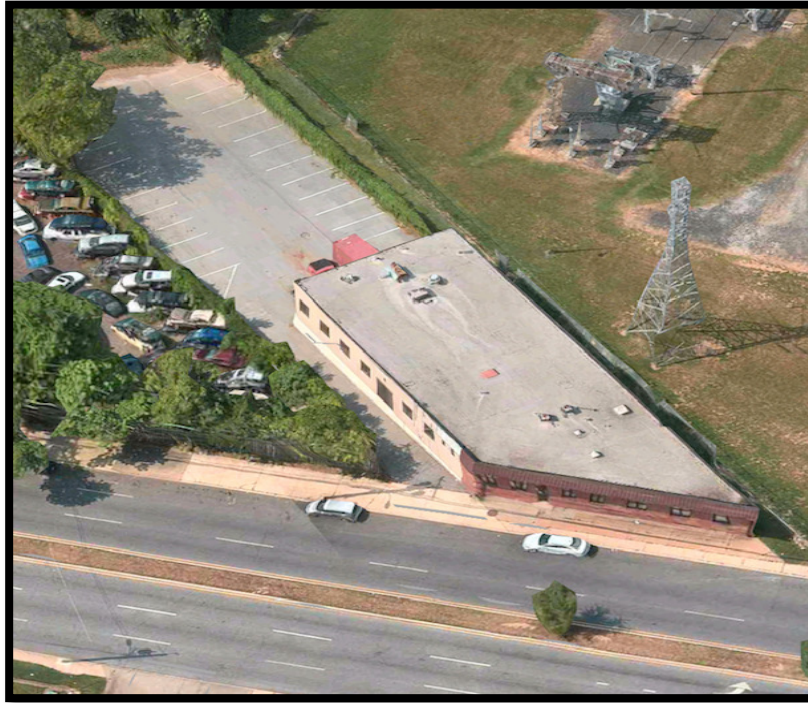




Gold and Company

Commercial Real Estate in the Baltimore Metropolitan Area



4705 Erdman Ave, Baltimore, MD 21205

Gold and Company, LLC

**5601 Newbury St.
Baltimore, MD 21209**

Gary Glover
443.629-2133
gary@goldcommercial.net

Mitch Gold
410.456.2492
Mitch@goldcommercial.net

Industrial/Flex Building FOR SALE

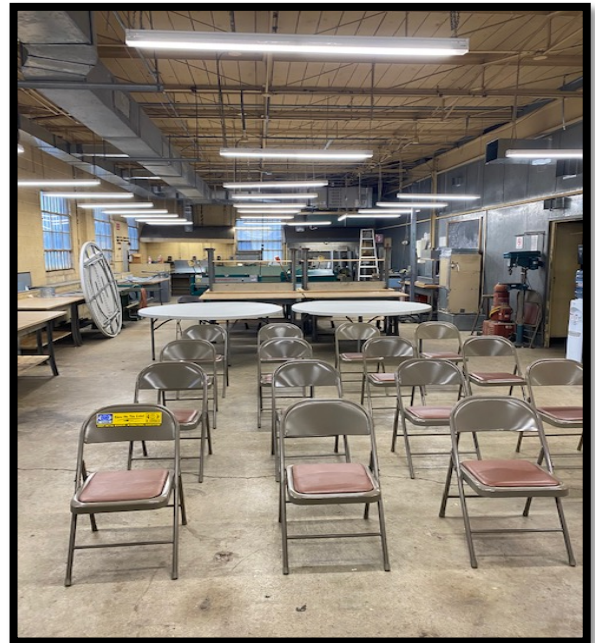
- **Building Size: 6,118 sf**
- **Lot Size: 19,733 sf**
- **Lot is Fenced and Paved**
- **Zoning: I-2**
- **Heavy Power**
- **Fully Conditioned Space**
- **Great Exposure on Busy Erdman Ave**
- **Proximity to I-95 and I-695**



Gold and Company

Commercial Real Estate in the Baltimore Metropolitan Area

Images

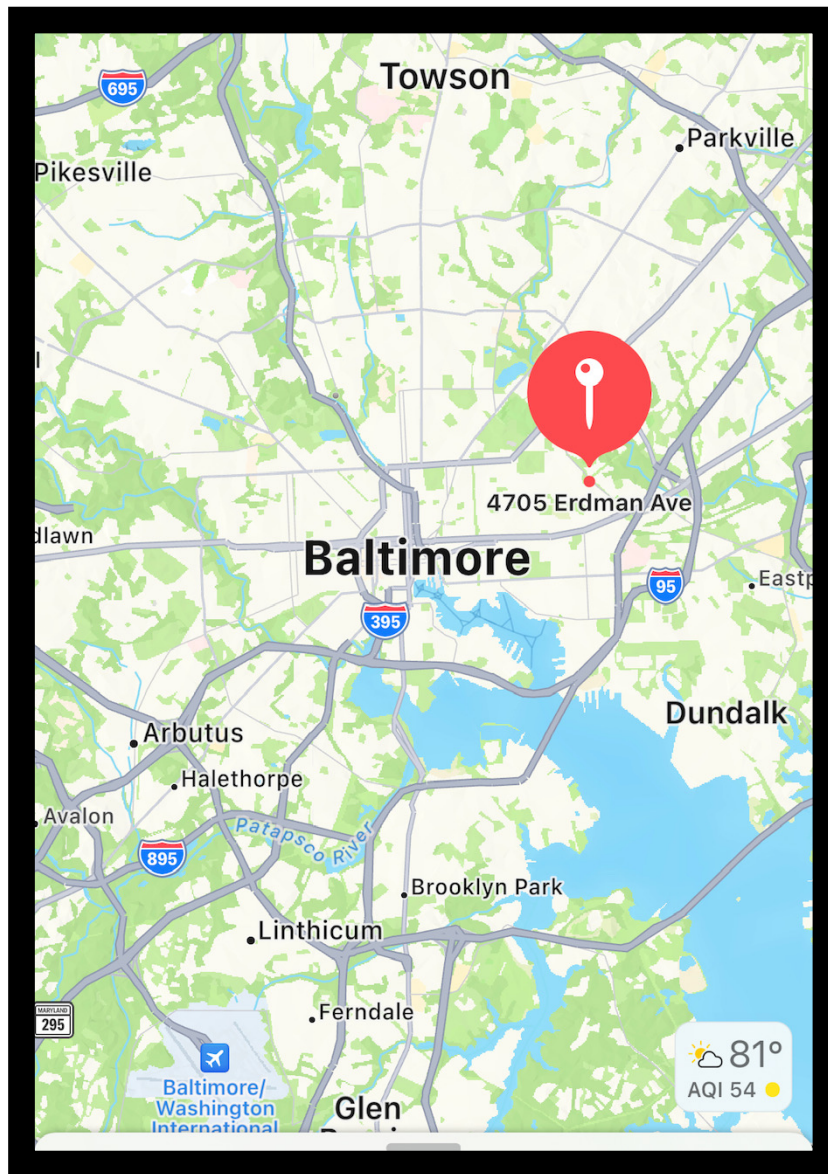




Gold and Company

Commercial Real Estate in the Baltimore Metropolitan Area

MAP



**Gary Glover/ Mitch Gold
Gold and Company, LLC
5601 Newbury St.
Baltimore, MD 21209**

**410.578.1300
www.goldcommercial.net**