



GOLD AND COMPANY, LLC

WWW.GOLDCOMMERCIAL.NET

Commercial Real Estate in the Baltimore Metropolitan Area



240 S. Kresson St. Baltimore, MD 21224

Gold And Company, LLC

**5601 Newbury St.
Baltimore, MD 21209**

**Jim Chivers
443.928.7522 cell
jim@goldcommercial.net
www.goldcommercial.net**

- **Heavy Industrial Property Available FOR LEASE**
- **+/- 8,000 sf Modern Fleet Maintenance Drive-Thru Building**
- **+/- 7,500 sf Cross Dock Warehouse**
- **2.08 Acres**
- **Fenced and Paved Lot**
- **I-2 Zoning—Heavy Industrial**
- **Located in a Qualified Enterprise, HUB, and Opp. Zone**
- **East Baltimore Industrial Submarket**
- **Close to Dundalk Marine Port**
- **Excellent Access to main Thoroughfares and Interstates**

This property offering is subject to change without notice. All information is deemed reliable but not guaranteed.



Gold And Company

Commercial Real Estate in the Baltimore Metropolitan Area

Jim Chivers: 410.578.1300

jim@goldcommercial.net

240 S. Kresson St. Baltimore, MD 21224

Additional Aerials





Gold And Company

Commercial Real Estate in the Baltimore Metropolitan Area

240 S. Kresson St. Baltimore, MD 21224

Additional Pictures



Jim Chivers
Gold And Company, LLC
5601 Newbury St.
Baltimore, MD 21209

410.578.1300 (Office)

www.goldcommercial.net

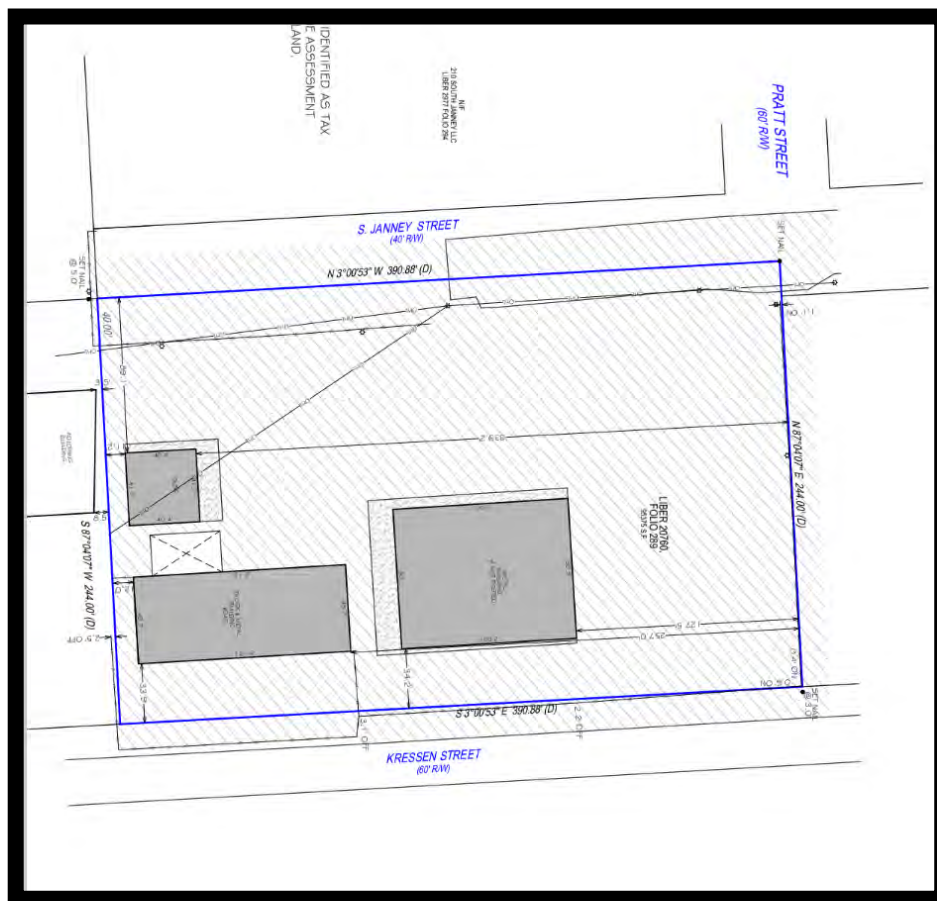


Gold And Company

Commercial Real Estate in the Baltimore Metropolitan Area

240 S. Kresson St. Baltimore, MD 21224

Property Survey



Jim Chivers
Gold And Company, LLC
5601 Newbury St.
Baltimore, MD 21209

410.578.1300 (Office)

www.goldcommercial.net

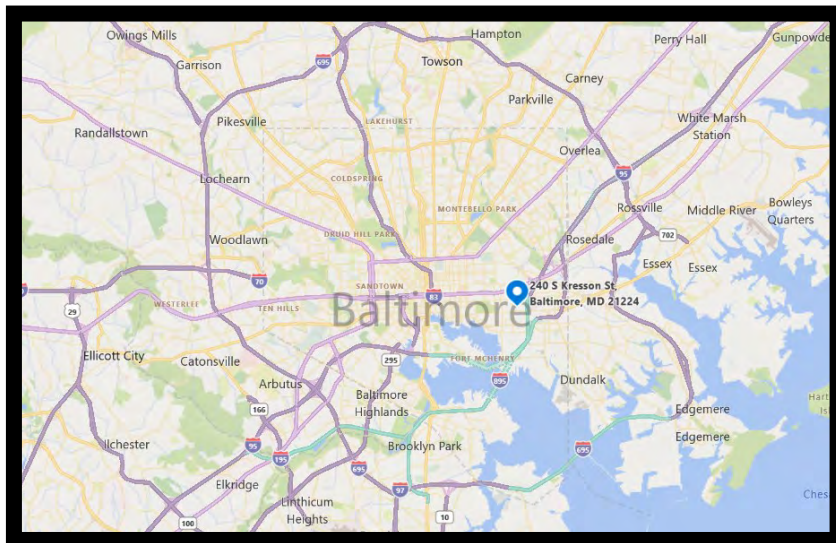
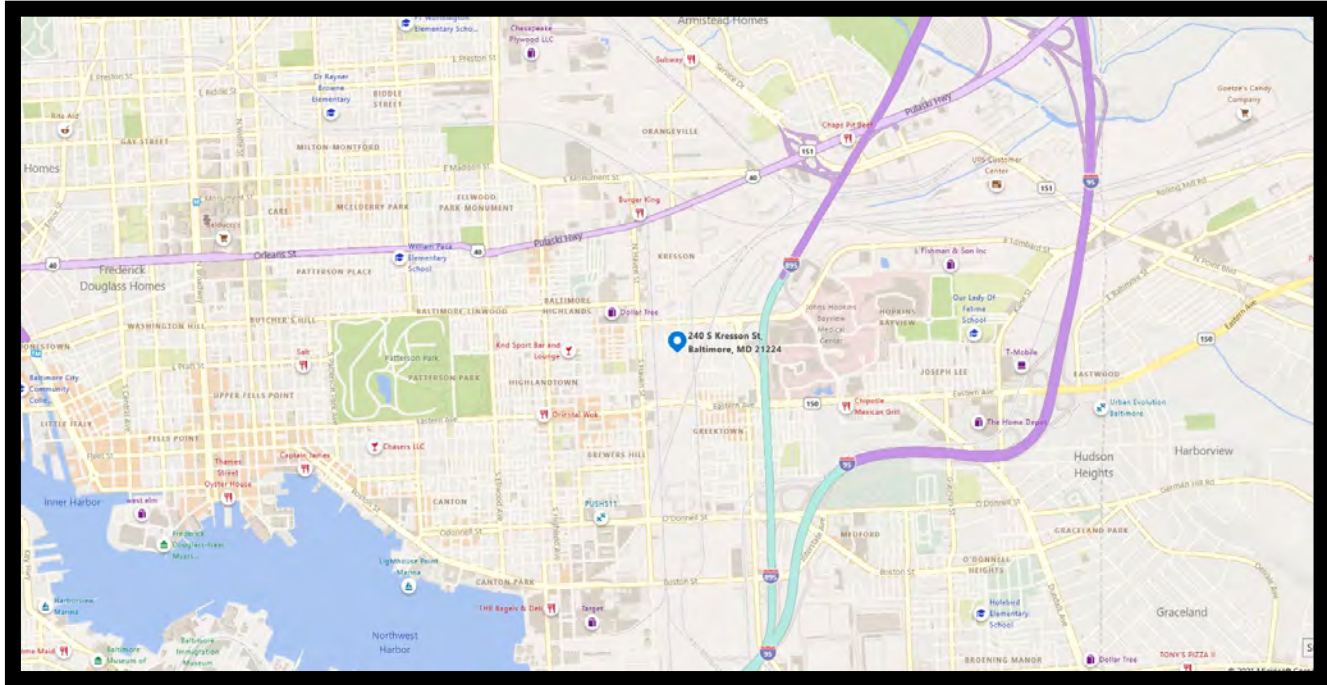


Gold And Company

Commercial Real Estate in the Baltimore Metropolitan Area

240 S. Kresson St. Baltimore, MD 21224

MAP



Jim Chivers
Gold And Company, LLC
5601 Newbury St.
Baltimore, MD 21209

410.578.1300 (Office)

www.goldcommercial.net