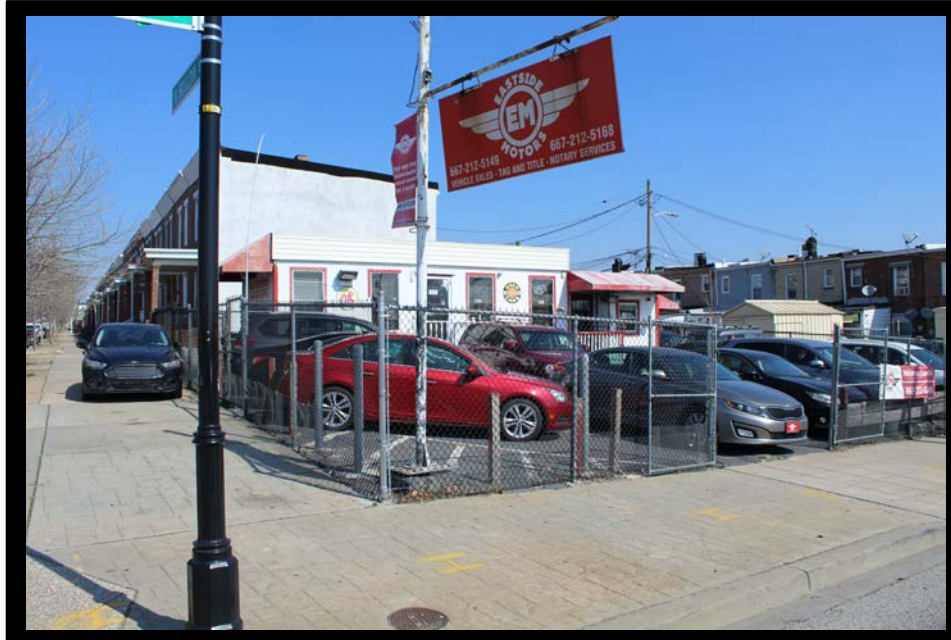




# GOLD AND COMPANY, LLC



**3300 Pulaski Highway, Baltimore MD 21224**

## **Gold and Company, LLC**

**5601 Newbury St.  
Baltimore, MD 21209**

**Alex Simone**  
**443.845.4413**  
[Alex@goldcommercial.net](mailto:Alex@goldcommercial.net)

**Mitch Gold**  
**410.456.2492**  
[Mitch@goldcommercial.net](mailto:Mitch@goldcommercial.net)

**Office: 410.578.1300**  
**www.goldcommercial.net**

- **a.k.a. 401-409 N. Bouldin St.**
- **Automotive Sales Lot**
- **FOR SALE**
- **68' frontage on Pulaski Hwy**
- **East Baltimore City**
- **C-2 zoning**
- **600 +/- sf office building**
- **Maryland Used Vehicle Dealer License can be included**
- **Park 20 +/- cars on-site**
- **Secure fence, 2 curb cuts**
- **Daily Traffic Count – 28,000+**



# Gold and Company

*Commercial Real Estate in the Baltimore Metropolitan Area*

**3300 Pulaski Highway, Baltimore, MD 21224**



**Alex Simone / Mitch Gold  
Gold and Company, LLC  
5601 Newbury St.  
Baltimore, MD 21209**

**410.578.1300  
[www.goldcommercial.net](http://www.goldcommercial.net)**

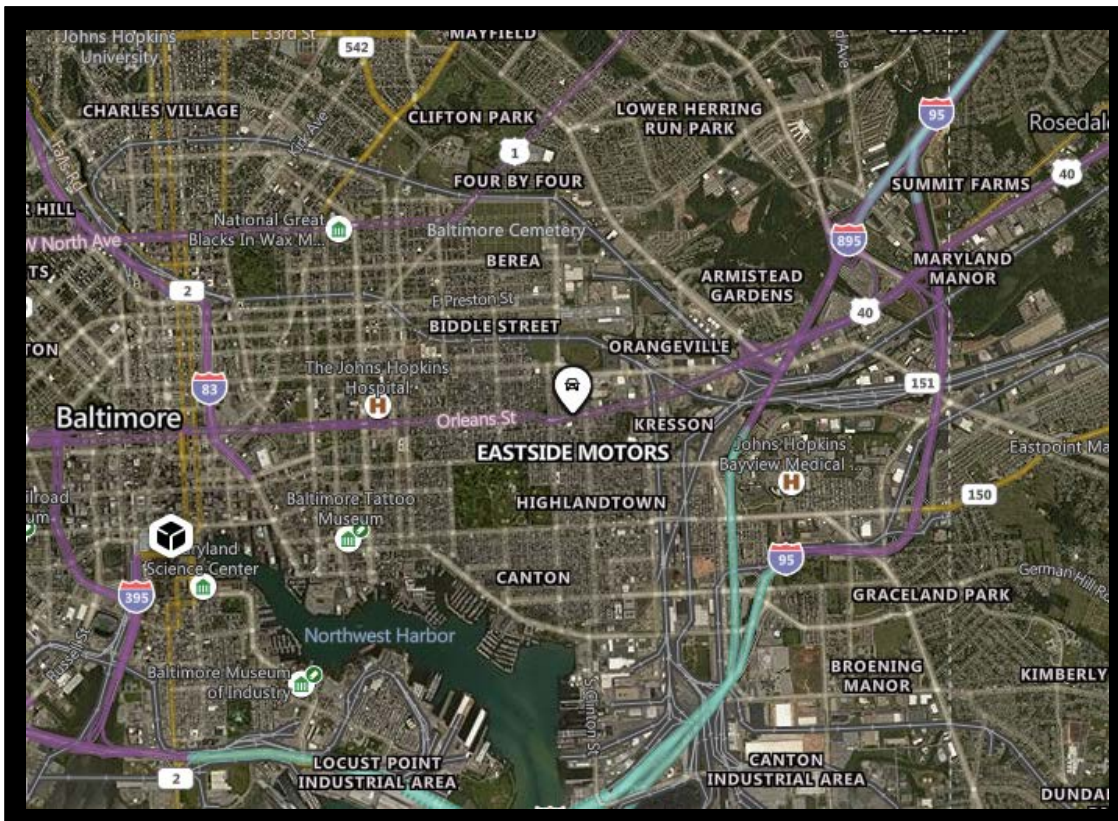


Est. 1999

# Gold and Company

*Commercial Real Estate in the Baltimore Metropolitan Area*

**3300 Pulaski Highway, Baltimore, MD 21224**



**Alex Simone / Mitch Gold**  
**Gold and Company, LLC**  
**5601 Newbury St.**  
**Baltimore, MD 21209**

**410.578.1300**  
**[www.goldcommercial.net](http://www.goldcommercial.net)**