



# GOLD AND COMPANY, LLC

WWW.GOLDCOMMERCIAL.NET

*Commercial Real Estate in the Baltimore Metropolitan Area*



**8717 Belair Rd. Nottingham, MD 21236**

## Gold And Company, LLC

5601 Newbury St.  
Baltimore, MD 21209

Jim Chivers  
443.928.7522 cell  
jim@goldcommercial.net

www.goldcommercial.net

- **Office Building Available FOR SALE**
- **+/- 2,200 sf Building**
- **0.37 Acre Land Area**
- **CB Zoning**
- **Excellent Frontage**
- **3 Private Offices w/ Open Bullpen Area**
- **Kitchenette Area**
- **Across from Perry Hall Crossing—Retail Center**
- **Ideal for Professional Offices or for Contractors Offices**
- **Parking for +/- 10 Vehicles**
- **Call For More Information**

This property offering is subject to change without notice. All information is deemed reliable but not guaranteed.

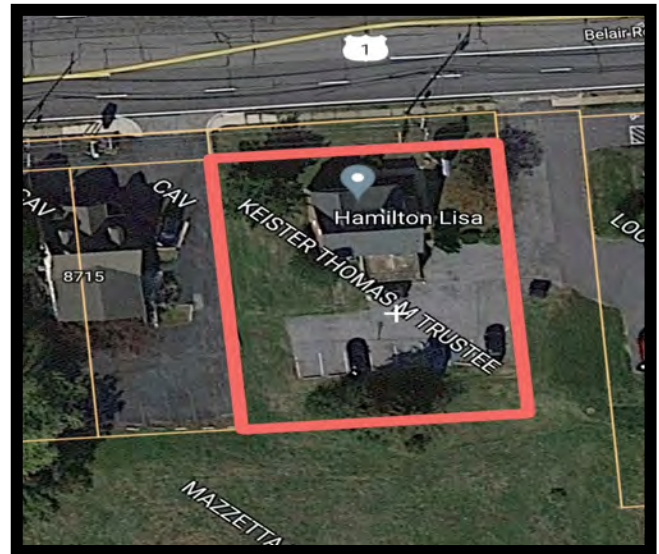
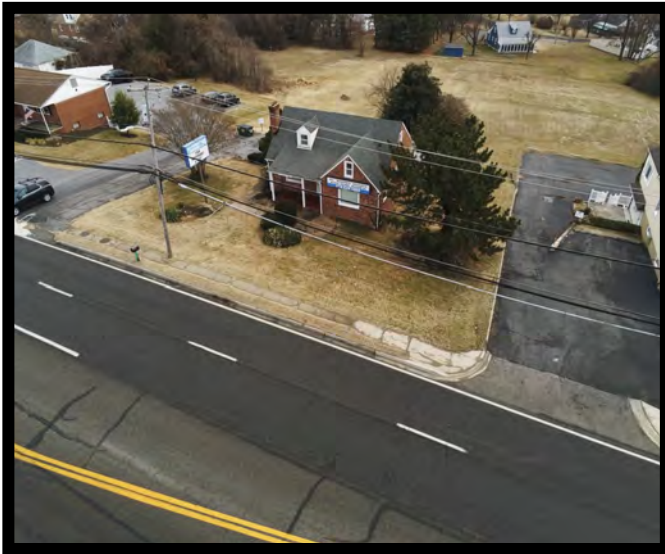


# Gold And Company

*Commercial Real Estate in the Baltimore Metropolitan Area*

**8717 Belair Rd. Nottingham, MD 21236**

## Aerials



**Jim Chivers**  
**Gold And Company, LLC**  
**5601 Newbury St.**  
**Baltimore, MD 21209**

**410.578.1300 (Office)**

**[www.goldcommercial.net](http://www.goldcommercial.net)**



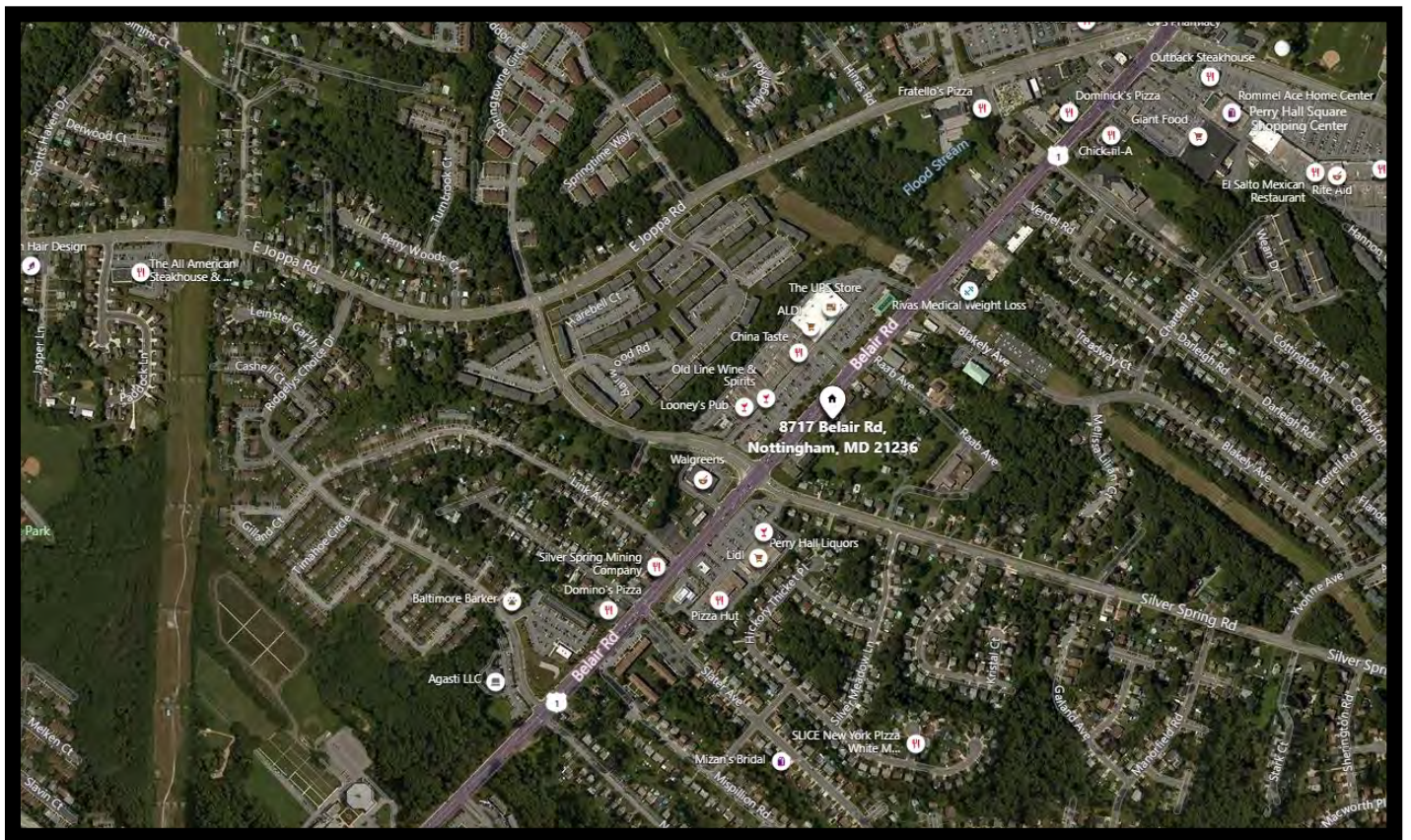


# Gold And Company

*Commercial Real Estate in the Baltimore Metropolitan Area*

**8717 Belair Rd. Nottingham, MD 21236**

## Map



**Jim Chivers**  
**Gold And Company, LLC**  
**5601 Newbury St.**  
**Baltimore, MD 21209**

**410.578.1300 (Office)**

**[www.goldcommercial.net](http://www.goldcommercial.net)**