



GOLD AND COMPANY, LLC



1130 Light Street, Baltimore, MD 21230

Gold and Company, LLC

**5601 Newbury St.
Baltimore, MD 21209**

Alex Simone
443.845.4413
Alex@goldcommercial.net

Mitch Gold
410.456.2492
Mitch@goldcommercial.net

Office: 410.578.1300
www.goldcommercial.net

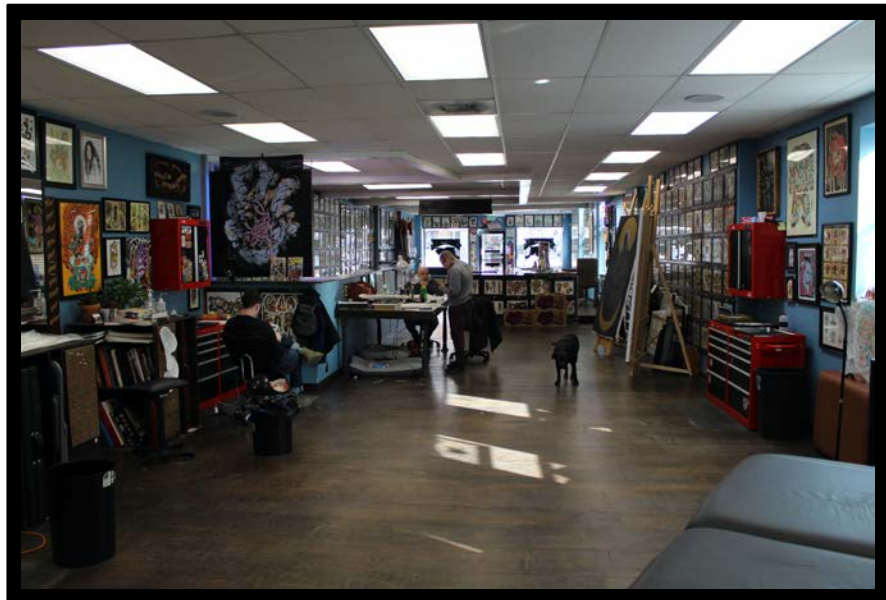
- **FOR LEASE**
- **Corner Retail-Office Space**
- **Federal Hill**
 - **1 block south of Cross Street Market**
- **Corner of Light and West Sts.**
- **2,300 square feet**
- **C-1 zoning – Broad Uses**
- **Excellent Demographics**
- **Full basement for storage**
- **Convenient to I-95**



Gold and Company

Commercial Real Estate in the Baltimore Metropolitan Area

1130 Light Street, Baltimore, MD 21230



**Alex Simone / Mitch Gold
Gold and Company, LLC
5601 Newbury St.
Baltimore, MD 21209**

**410.578.1300
www.goldcommercial.net**

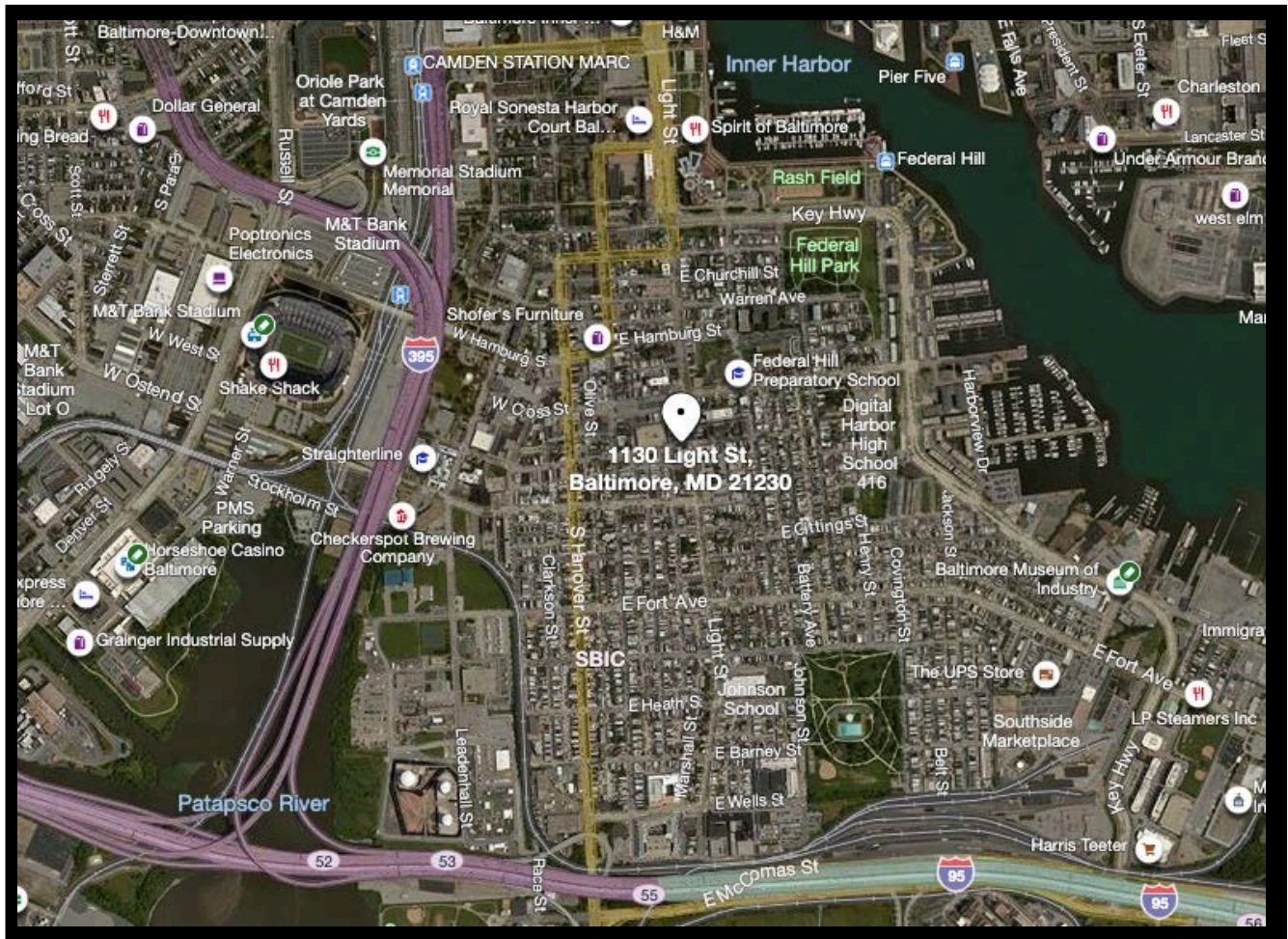


Est. 1999

Gold and Company

Commercial Real Estate in the Baltimore Metropolitan Area

1130 Light Street, Baltimore, MD 21230



Alex Simone / Mitch Gold
Gold and Company, LLC
5601 Newbury St.
Baltimore, MD 21209

410.578.1300
www.goldcommercial.net