



GOLD AND COMPANY, LLC

WWW.GOLDCOMMERCIAL.NET

Commercial Real Estate in the Baltimore Metropolitan Area



1624—1630 E. Baltimore St. Baltimore, MD 21231

Gold And Company, LLC

**5601 Newbury St.
Baltimore, MD 21209**

**Jim Chivers
443.928.7522 cell
jim@goldcommercial.net**

www.goldcommercial.net

- **Baltimore City Building Available FOR SALE**
- **Opportunity Zone Qualified**
- **+/- 6,000 sf Building**
- **Off Street Parking Lot**
- **4 Total Parcels**
- **O-R Zoning**
- **Rear Drive-In Warehouse / Storage Area**
- **East Baltimore City / Near JHH and KKI**
- **Call For More Information**

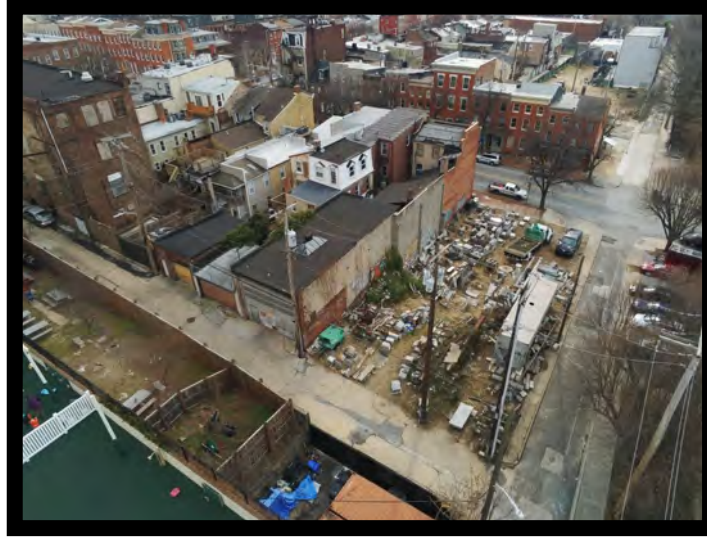
This property offering is subject to change without notice. All information is deemed reliable but not guaranteed.



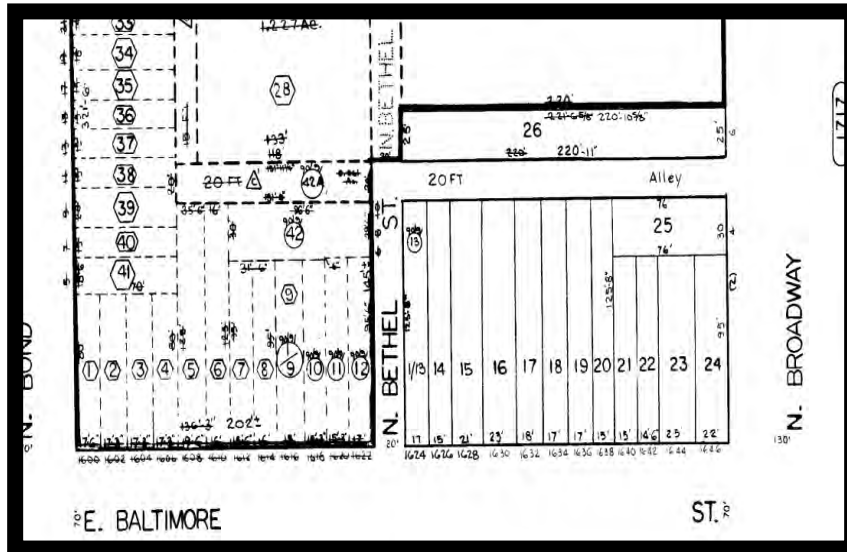
Gold And Company

Commercial Real Estate in the Baltimore Metropolitan Area

1624–1630 E. Baltimore St. Baltimore, MD



Rear View



*Block Map
Lots 1/13, 14, 15, and 16*

Jim Chivers
Gold And Company, LLC
5601 Newbury St.
Baltimore, MD 21209

410.578.1300 (Office)

www.goldcommercial.net

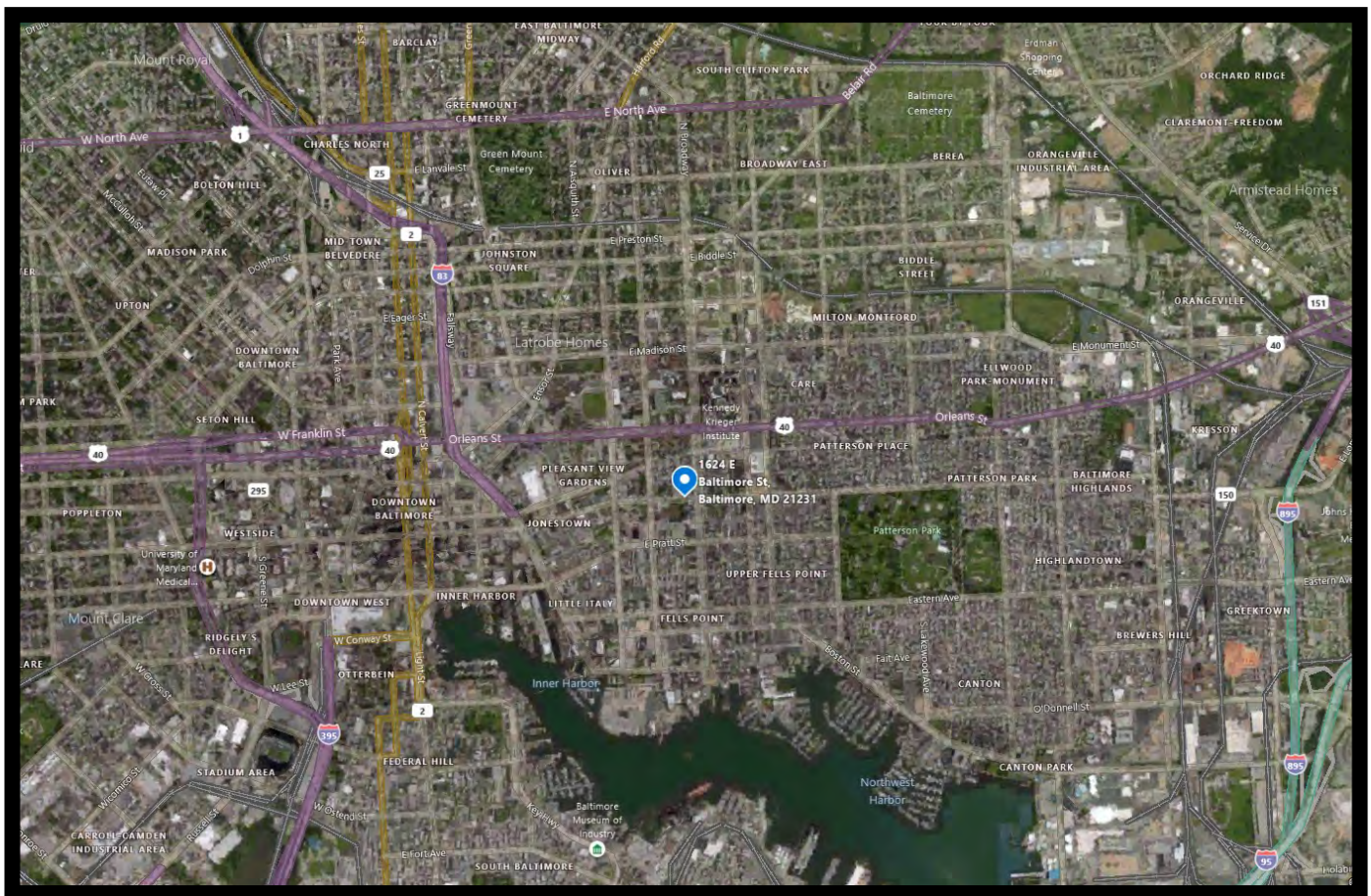


Gold And Company

Commercial Real Estate in the Baltimore Metropolitan Area

1624—1630 E. Baltimore St. Baltimore, MD

MAP



Jim Chivers
Gold And Company, LLC
5601 Newbury St.
Baltimore, MD 21209

410.578.1300 (Office)

www.goldcommercial.net