



# **GOLD AND COMPANY, LLC**

**WWW.GOLDCOMMERCIAL.NET**

***Commercial Real Estate in the Baltimore Metropolitan Area***



**11350—11420 Red Lion Rd. White Marsh, MD 21162**

## **Gold And Company, LLC**

**5601 Newbury St.  
Baltimore, MD 21209**

**Jim Chivers  
443.928.7522 cell  
jim@goldcommercial.net**

**www.goldcommercial.net**

- **10.4 ACRES AVAILABLE FOR SALE**
- **ML Zoning—Baltimore County Industrial**
- **3 Separate Parcels**
- **Build up to +/- 60,000 sf of Buildings**
- **Close Access to I-95 and Pulaski Hwy**
- **East Baltimore County Industrial Submarket**
- **Public Water and Sewer**
- **Contact us for More Information**

This property offering is subject to change without notice. All information is deemed reliable but not guaranteed.

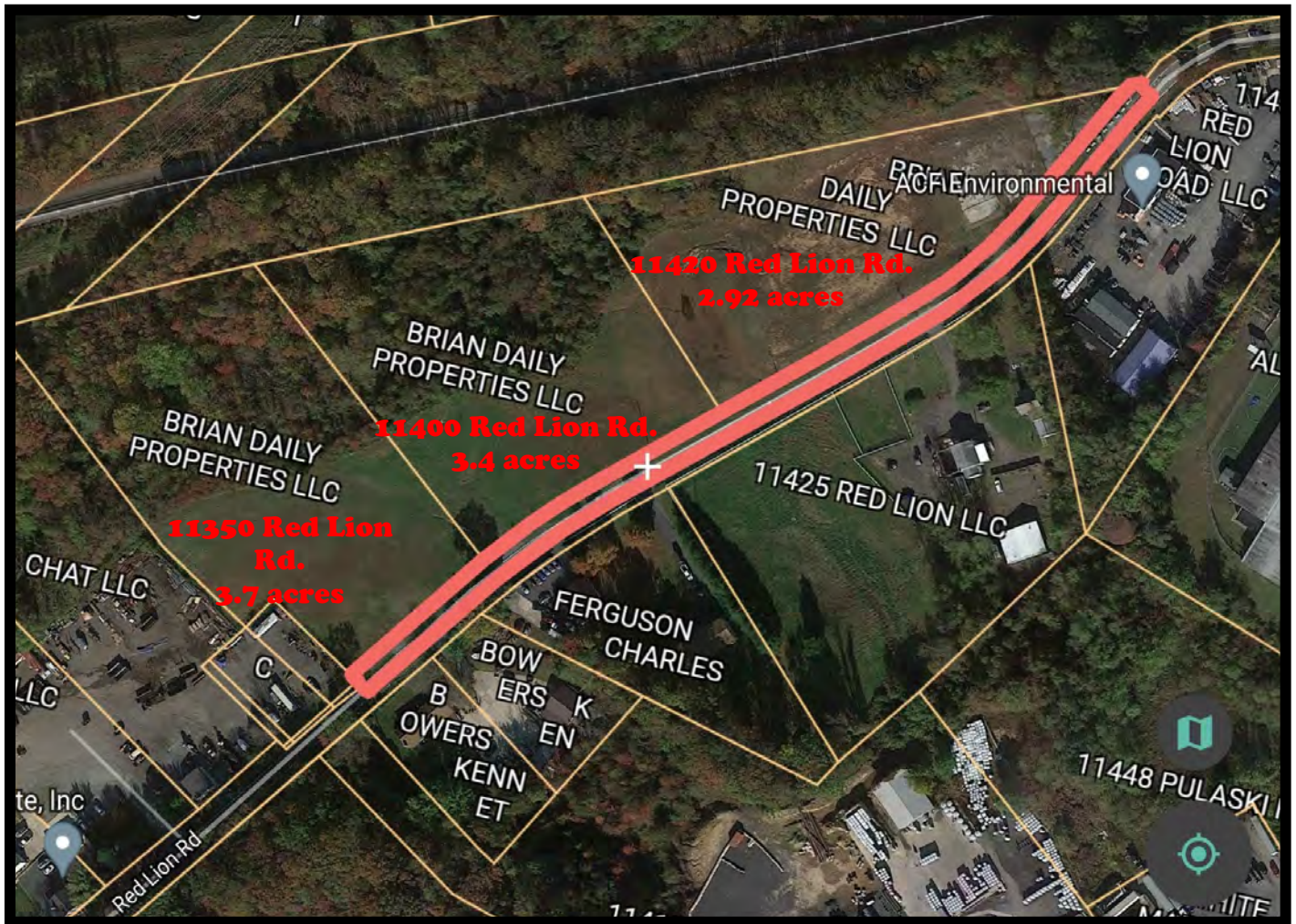


# Gold And Company

*Commercial Real Estate in the Baltimore Metropolitan Area*

**11350—11420 Red Lion Rd. White Marsh, MD**

## Parcels



**Jim Chivers**  
**Gold And Company, LLC**  
**5601 Newbury St.**  
**Baltimore, MD 21209**

**410.578.1300 (Office)**

**[www.goldcommercial.net](http://www.goldcommercial.net)**

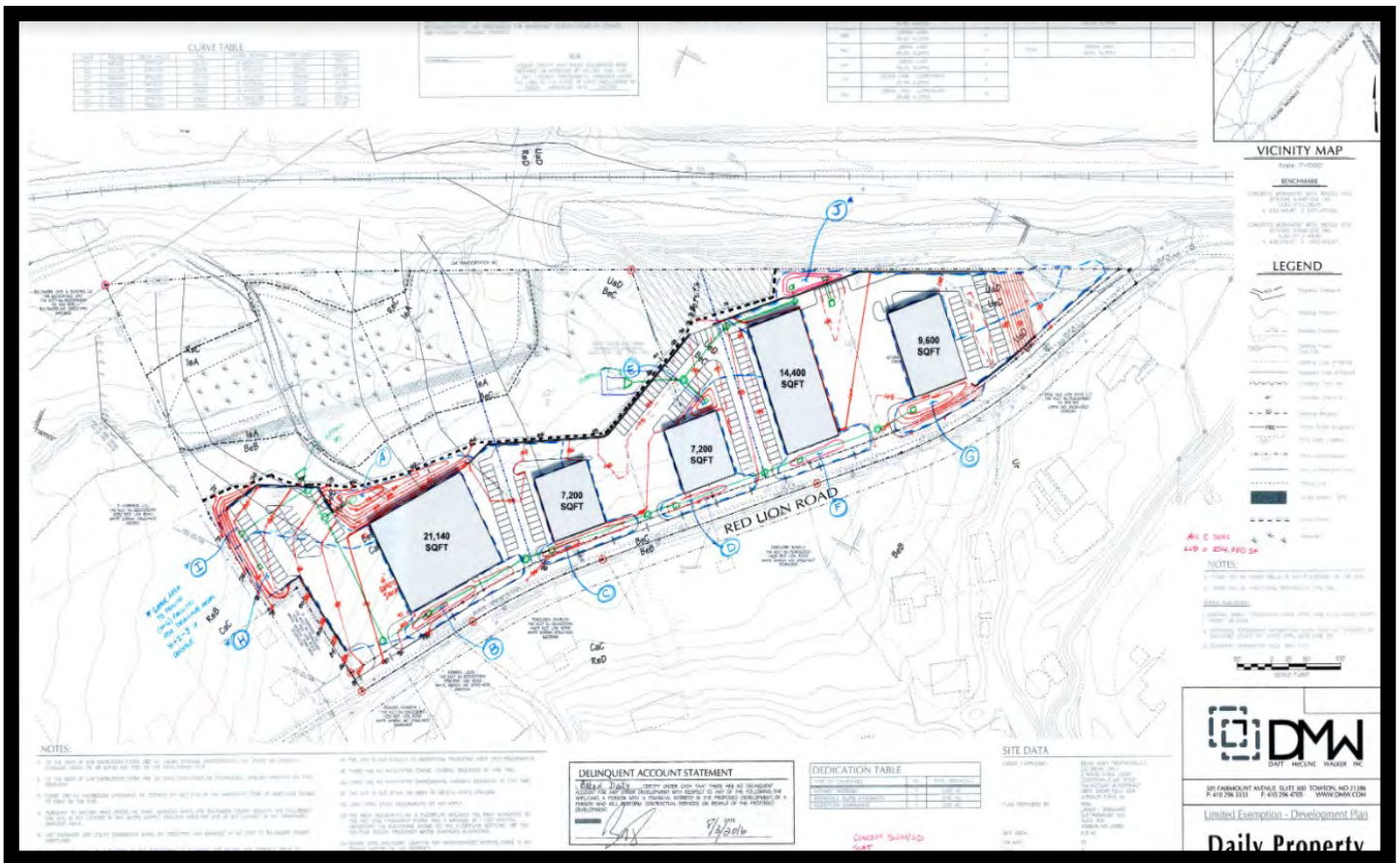


# Gold And Company

Commercial Real Estate in the Baltimore Metropolitan Area

**11350-11420 Red Lion Rd.**

## Proposed Layouts



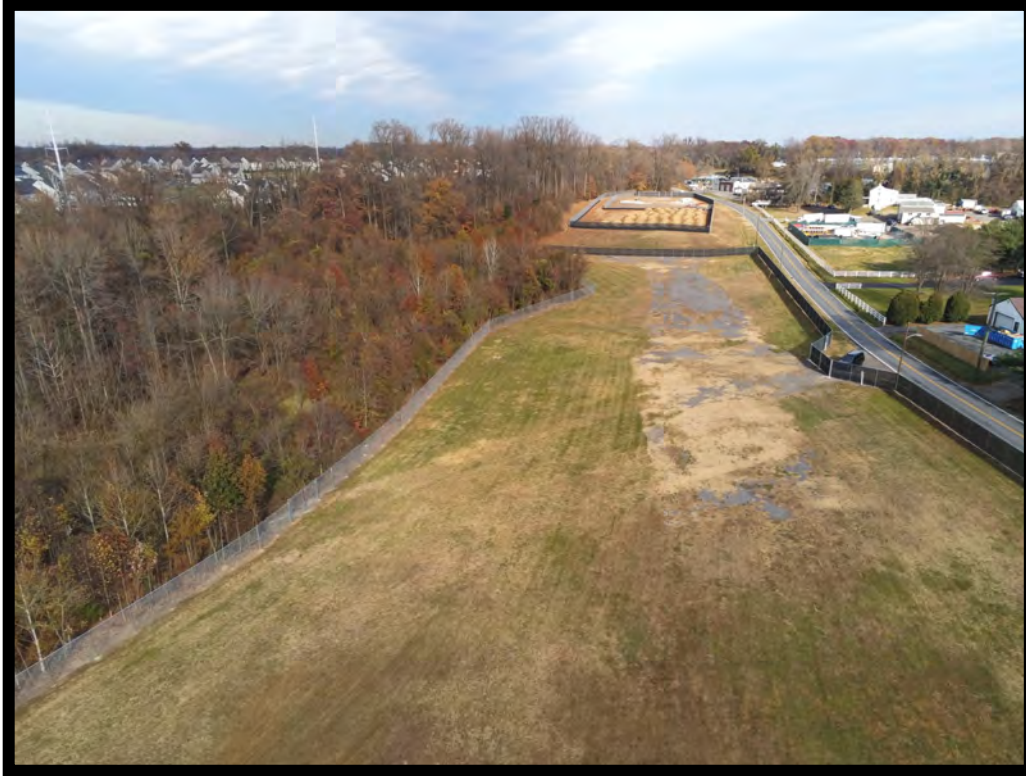
**Jim Chivers**  
**Gold And Company, LLC**  
**5601 Newbury St.**  
**Baltimore, MD 21209**

**410.578.1300 (Office)**

**www.goldcommercial.net**

# **11350-11420 Red Lion Rd.**

## **Birds Eye View**



**Jim Chivers**  
**Gold And Company, LLC**  
**5601 Newbury St.**  
**Baltimore, MD 21209**

**410.578.1300 (Office)**

**[www.goldcommercial.net](http://www.goldcommercial.net)**