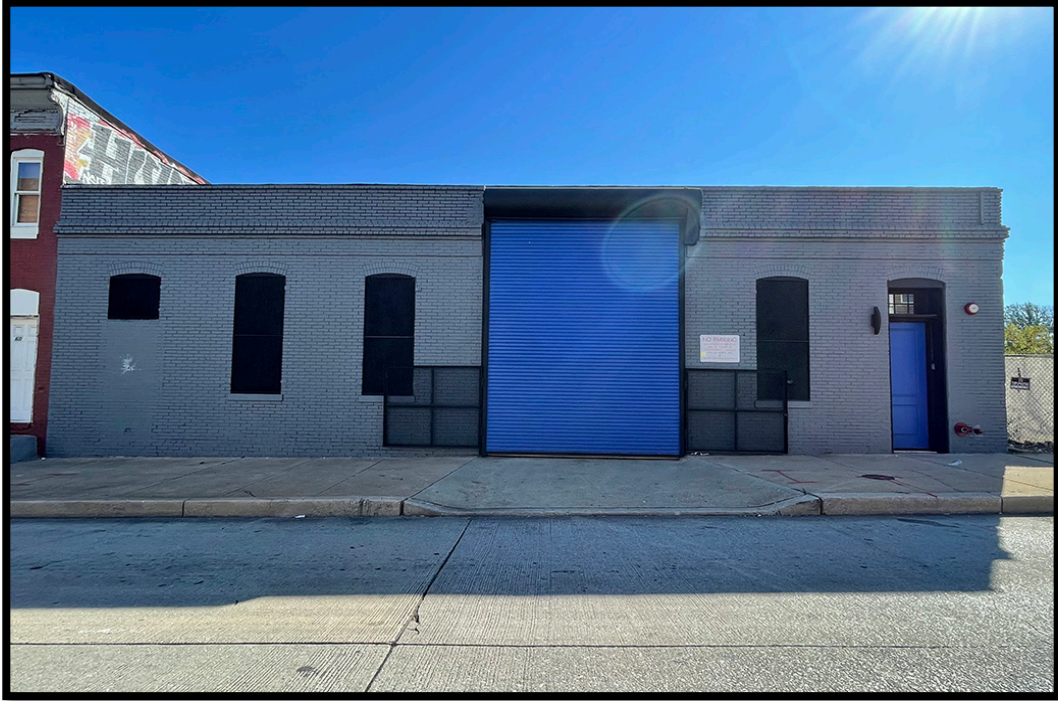




Gold and Company

Commercial Real Estate in the Baltimore Metropolitan Area



611 S Monroe St., Baltimore, MD 21223

Gold and Company, LLC

**5601 Newbury St.
Baltimore, MD 21209**

Gary Glover
443.629-2133
gary@goldcommercial.net

Mitch Gold
410.456.2492
Mitch@goldcommercial.net

Industrial Building Available

- **Building Size: 11,300 sf**
- **Zoning: I-1**
- **Ceiling Height: 15'**
- **Complete Renovation in 2020**
- **Like-new Condition**
- **Heavy Power**
- **Great Exposure**
- **One Mile from I-95 and MD-295**



Gold and Company

Commercial Real Estate in the Baltimore Metropolitan Area

Images



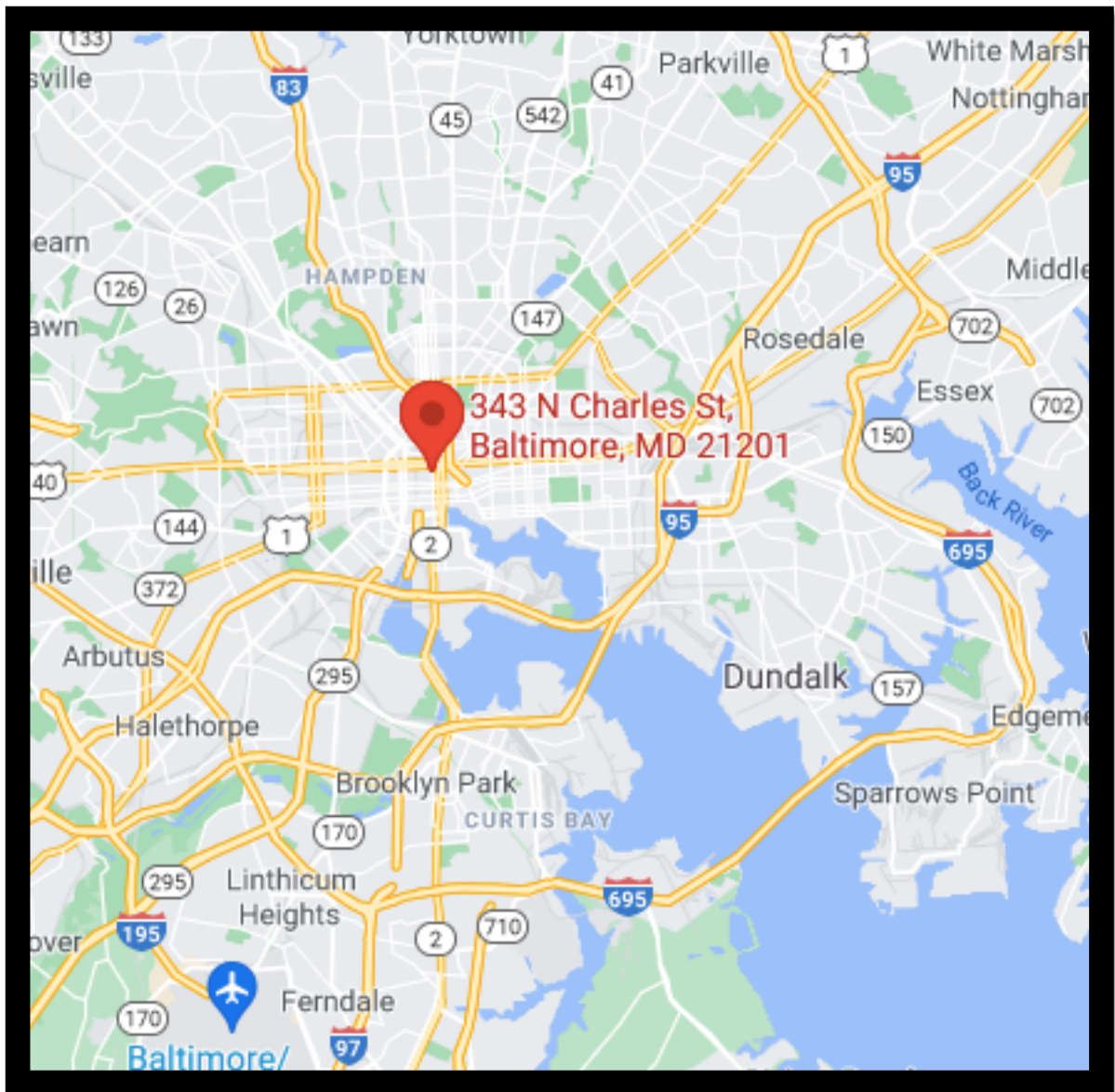


Est. 1999

Gold and Company

Commercial Real Estate in the Baltimore Metropolitan Area

MAP



Gary Glover/ Mitch Gold
Gold and Company, LLC
5601 Newbury St.
Baltimore, MD 21209

410.578.1300
www.goldcommercial.net