



# **GOLD AND COMPANY, LLC**



**511 South Caroline Street, Baltimore, MD 21231**

## **Gold and Company, LLC**

**5601 Newbury St.  
Baltimore, MD 21209**

**Mitch Gold  
410.456.2492  
[Mitch@goldcommercial.net](mailto:Mitch@goldcommercial.net)**

**Alex Simone  
443.845.4413  
[Alex@goldcommercial.net](mailto:Alex@goldcommercial.net)**

**Office: 410.578.1300  
[www.goldcommercial.net](http://www.goldcommercial.net)**

- **Handlebar Café & Bike Shop  
FOR SALE (real estate/FF&E)**
- **Located in Fells Point**
- **7,000 +/- sf building on 2 floors**
- **Elevator service**
- **C-1 zoning**
- **Demised for multiple tenants**
- **Liquor license, kitchen/fitness  
/restaurant equipment  
included**
- **Recent appraisal available for  
qualified interested parties**



# Gold and Company

*Commercial Real Estate in the Baltimore Metropolitan Area*

**511 South Caroline Street, Baltimore, MD 21231**

Full kitchen w/range hood + 2 walk-in coolers



Front of House seats up to 75



2<sup>nd</sup> Story Fitness/Dance Spaces will be delivered vacant – Full Locker Rooms Built Out



**Mitch Gold / Alex Simone**  
**Gold and Company, LLC**  
**5601 Newbury St.**  
**Baltimore, MD 21209**

**410.578.1300**  
**[www.goldcommercial.net](http://www.goldcommercial.net)**

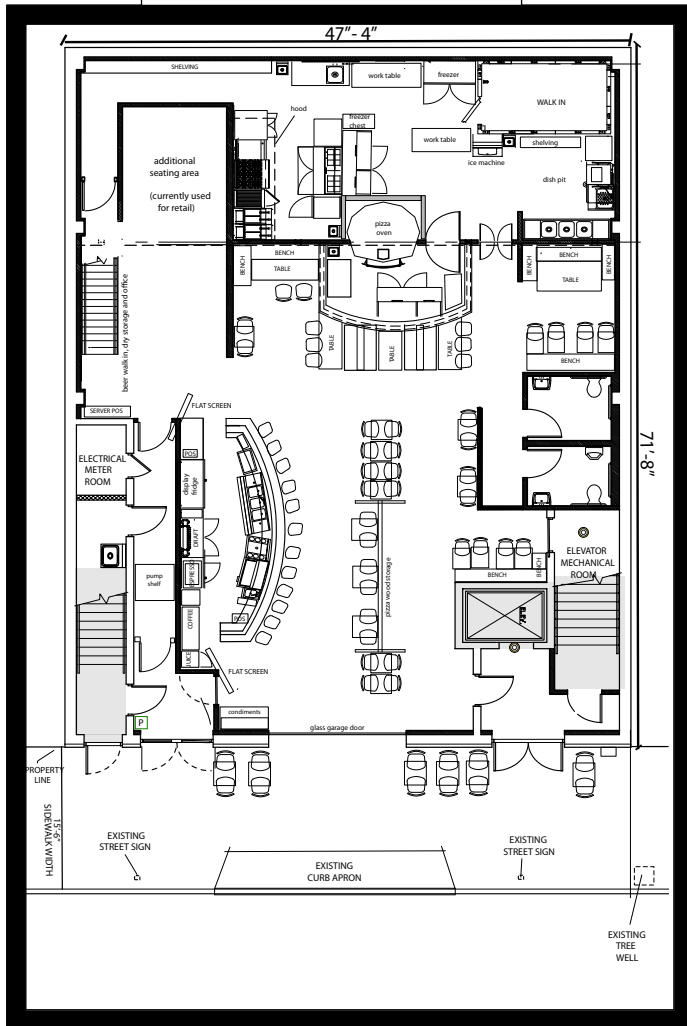


# Gold and Company

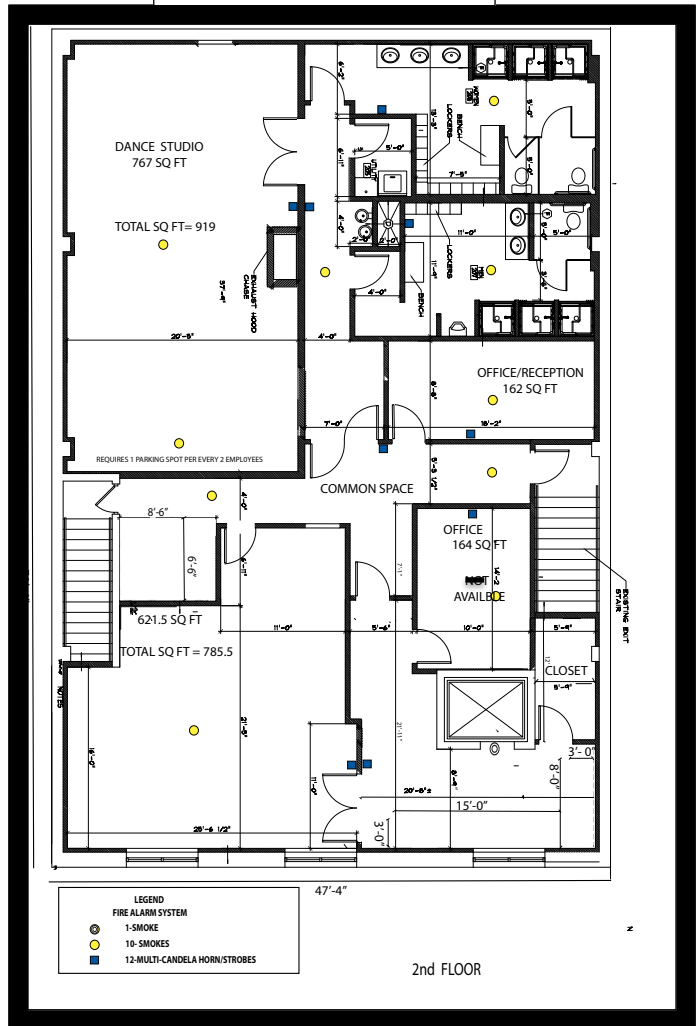
Commercial Real Estate in the Baltimore Metropolitan Area

**511 South Caroline Street, Baltimore, MD 21231**

Ground Level Floor Plan



2nd Level Floor Plan



**Mitch Gold / Alex Simone**  
**Gold and Company, LLC**  
**5601 Newbury St.**  
**Baltimore, MD 21209**

**410.578.1300**  
**www.goldcommercial.net**



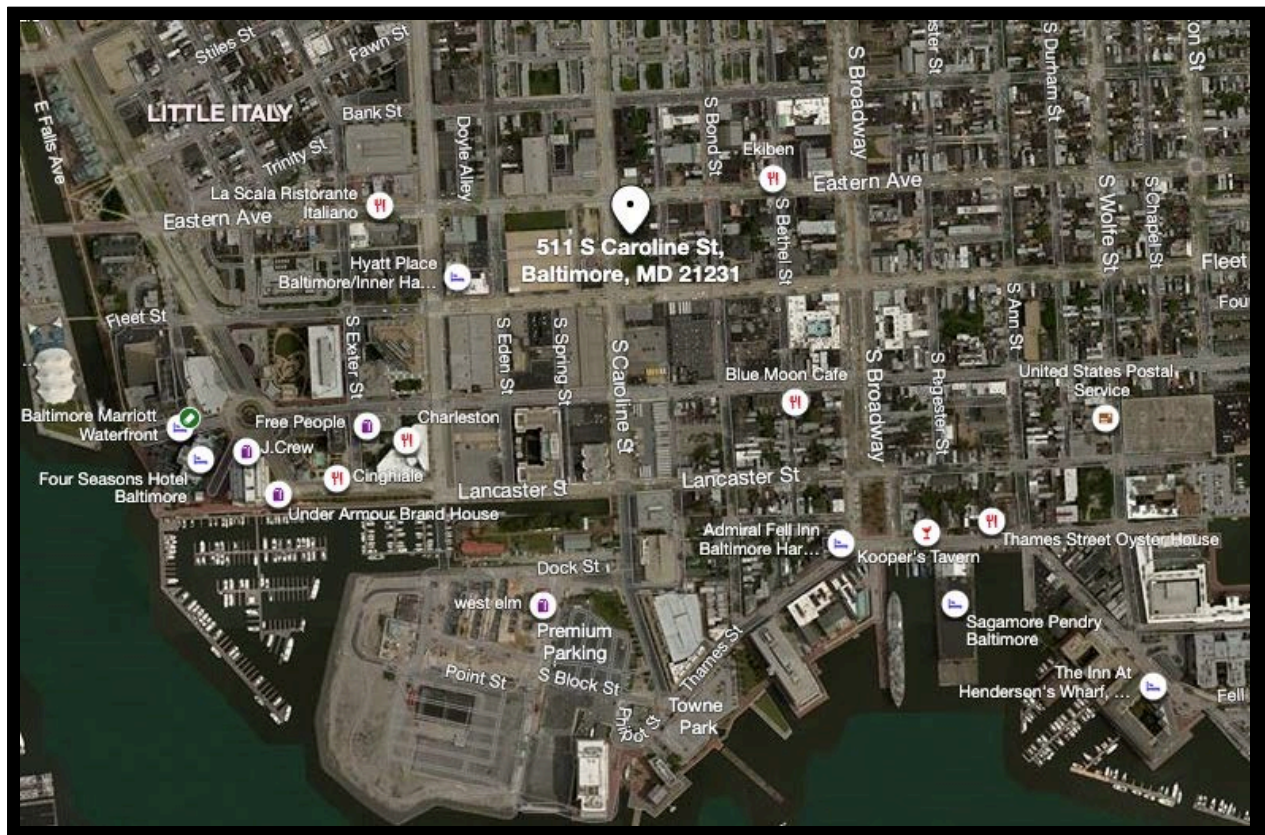


# Gold and Company

*Commercial Real Estate in the Baltimore Metropolitan Area*

**511 South Caroline Street, Baltimore, MD 21231**

Map of Fells Point



**Mitch Gold / Alex Simone**  
**Gold and Company, LLC**  
**5601 Newbury St.**  
**Baltimore, MD 21209**

**410.578.1300**  
**[www.goldcommercial.net](http://www.goldcommercial.net)**