



GOLD AND COMPANY, LLC

WWW.GOLDCOMMERCIAL.NET

Commercial Real Estate in the Baltimore Metropolitan Area



6038 Belle Grove Rd. Baltimore, MD 21225

Gold And Company, LLC

**5601 Newbury St.
Baltimore, MD 21209**

**Jim Chivers
443.928.7522 cell
jim@goldcommercial.net**

www.goldcommercial.net

- **Drive-In Contractors / Repair Facility AVAILABLE**
- **FOR SALE or LEASE**
- **+/- 2,300 sf Building**
- **2 Drive-In Doors**
- **+/- 11,900 sf Land Area**
- **C-4 Zoning**
- **Excellent Exposure and Frontage on Belle Grove Rd.**
- **Near Signalized Intersection**
- **Easy Access to Main Interstates**
- **Call For More Information**

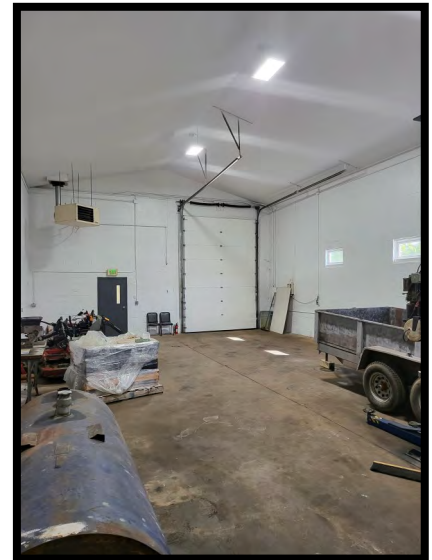
This property offering is subject to change without notice. All information is deemed reliable but not guaranteed.



Gold And Company

Commercial Real Estate in the Baltimore Metropolitan Area

6038 Belle Grove Rd. Baltimore, MD



Jim Chivers
Gold And Company, LLC
5601 Newbury St.
Baltimore, MD 21209

410.578.1300 (Office)

www.goldcommercial.net

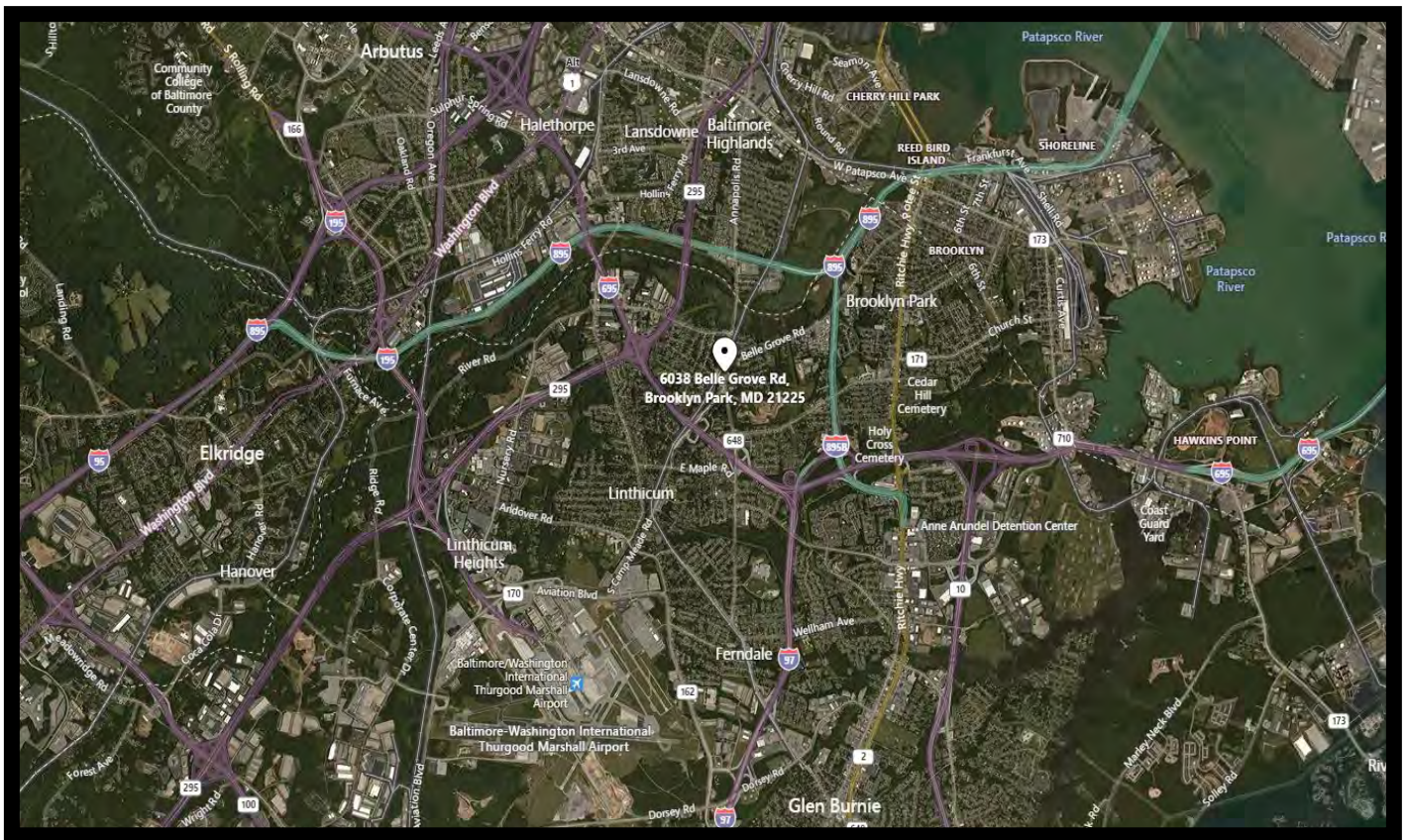


Gold And Company

Commercial Real Estate in the Baltimore Metropolitan Area

6038 Belle Grove Rd. Baltimore, MD

MAP



Jim Chivers
Gold And Company, LLC
5601 Newbury St.
Baltimore, MD 21209

410.578.1300 (Office)

www.goldcommercial.net