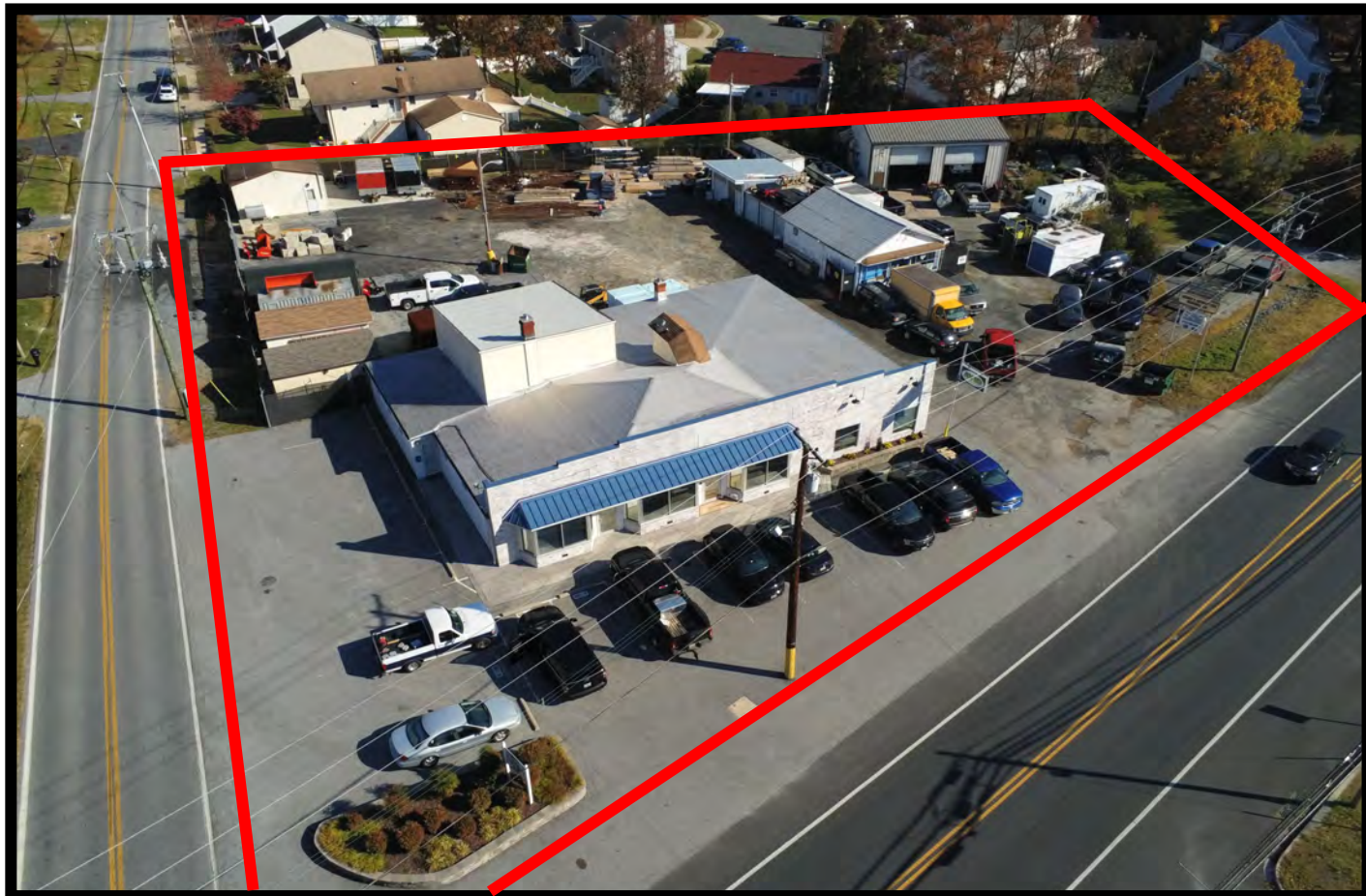




# **GOLD AND COMPANY, LLC**

**WWW.GOLDCOMMERCIAL.NET**

***Commercial Real Estate in the Baltimore Metropolitan Area***



## **601 Back River Neck Rd. Essex, MD 21221**

### **Gold And Company, LLC**

**5601 Newbury St.  
Baltimore, MD 21209**

**Jim Chivers  
443.928.7522 cell  
jim@goldcommercial.net**

**www.goldcommercial.net**

- **Baltimore County Commercial Building FOR SALE**
- **+/- 7,000 sf Total Buildings**
- **+/- 5,000 sf Main Building / Office—First Class Buildout**
- **+/- 2,000 sf Drive-In Maintenance and Storage Bldgs.**
- **1.28 Acres Land Area**
- **BL Zoning—Baltimore County**
- **Partially Leased**
- **Easy Access to 702 / 695 / I-95**
- **Call For More Information**

This property offering is subject to change without notice. All information is deemed reliable but not guaranteed.

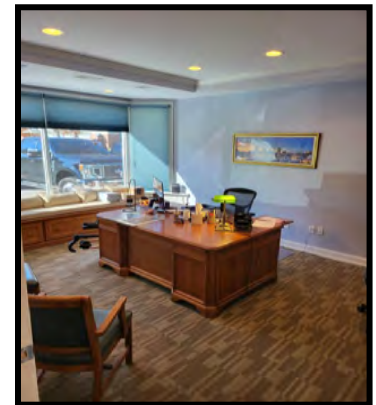
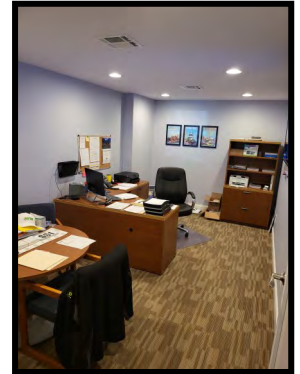


# Gold And Company

*Commercial Real Estate in the Baltimore Metropolitan Area*

**601 Back River Neck Rd. Essex, MD 21221**

## Additional Pictures



**Jim Chivers**  
**Gold And Company, LLC**  
**5601 Newbury St.**  
**Baltimore, MD 21209**

**410.578.1300 (Office)**

**[www.goldcommercial.net](http://www.goldcommercial.net)**

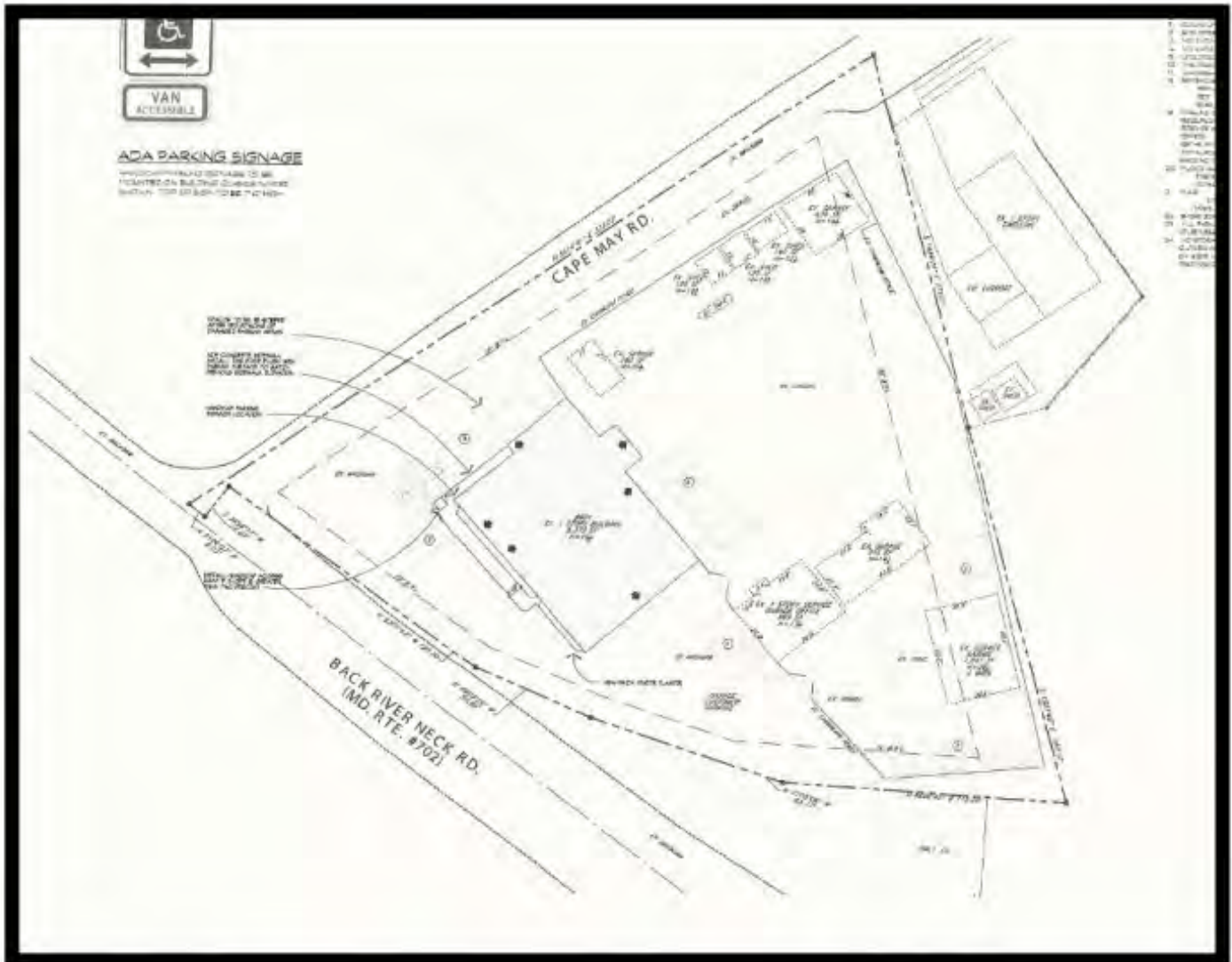


# Gold And Company

*Commercial Real Estate in the Baltimore Metropolitan Area*

**601 Back River Neck Rd. Essex, MD 21221**

## Property Survey



**Jim Chivers**  
**Gold And Company, LLC**  
**5601 Newbury St.**  
**Baltimore, MD 21209**

**410.578.1300 (Office)**

**[www.goldcommercial.net](http://www.goldcommercial.net)**

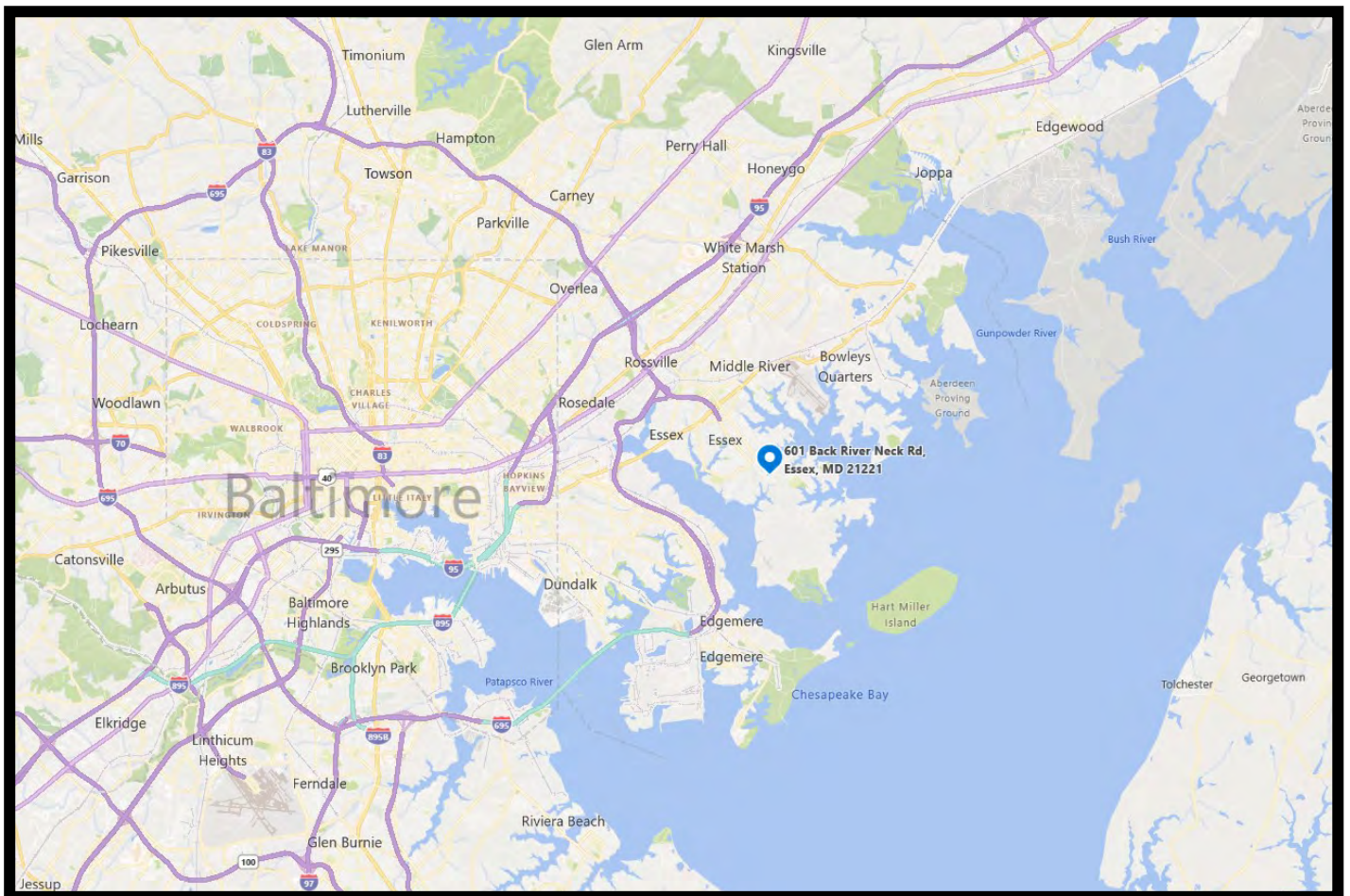


# Gold And Company

*Commercial Real Estate in the Baltimore Metropolitan Area*

**601 Back River Neck Rd. Essex, MD 21221**

## MAP



**Jim Chivers**  
**Gold And Company, LLC**  
**5601 Newbury St.**  
**Baltimore, MD 21209**

**410.578.1300 (Office)**

**[www.goldcommercial.net](http://www.goldcommercial.net)**