



# **GOLD AND COMPANY, LLC**

**WWW.GOLDCOMMERCIAL.NET**

***Commercial Real Estate in the Baltimore Metropolitan Area***



## **19 Ingleside Ave. Catonsville, MD 21228**

### **Gold And Company, LLC**

**5601 Newbury St.  
Baltimore, MD 21209**

**Jim Chivers  
443.928.7522 cell  
jim@goldcommercial.net**

**www.goldcommercial.net**

- **Owner / User Office Building Available FOR SALE / LEASE**
- **Off-Street Parking Available**
- **+/- 3,500 sf Building**
- **0.11 Acre Land Area**
- **Zoning: BL—CCC—Baltimore County**
- **Located in the Heart of Catonsville**
- **Easy Access to I-695 / I-95**
- **Ideal for Offices for Professional Services, Construction Co., Lawyers, Accountants, etc...**
- **Call For More Information**

This property offering is subject to change without notice. All information is deemed reliable but not guaranteed.



# Gold And Company

*Commercial Real Estate in the Baltimore Metropolitan Area*

**19 Ingleside Ave. Catonsville, MD 21228**

**Birds Eye View**



**Jim Chivers**  
**Gold And Company, LLC**  
**5601 Newbury St.**  
**Baltimore, MD 21209**

**410.578.1300 (Office)**

**[www.goldcommercial.net](http://www.goldcommercial.net)**

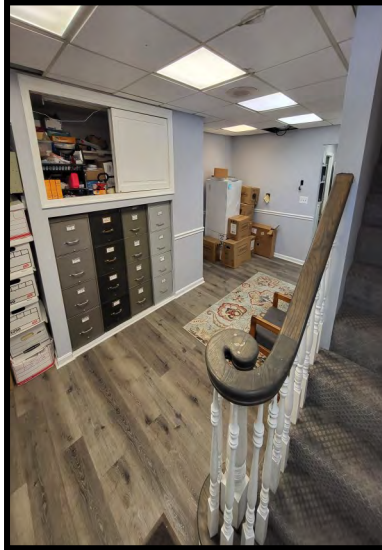
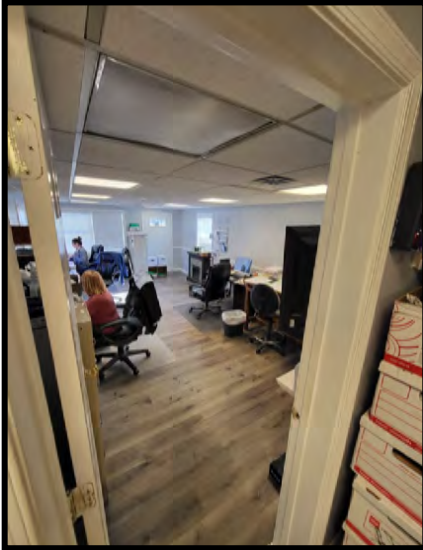


# Gold And Company

*Commercial Real Estate in the Baltimore Metropolitan Area*

**19 Ingleside Ave. Catonsville, MD 21228**

## Interior Pictures



**Jim Chivers  
Gold And Company, LLC  
5601 Newbury St.  
Baltimore, MD 21209**

**410.578.1300 (Office)**

**[www.goldcommercial.net](http://www.goldcommercial.net)**

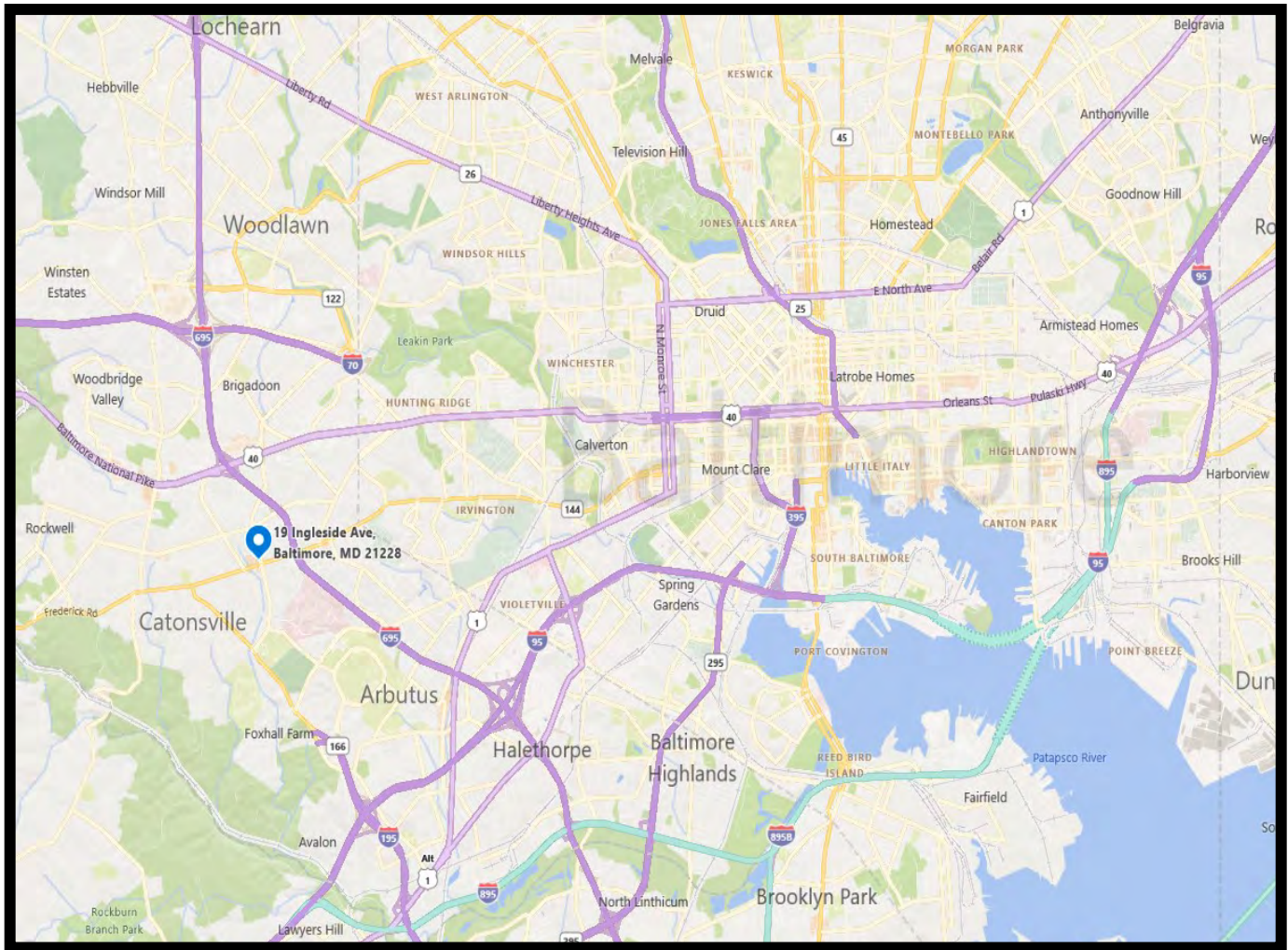


# Gold And Company

*Commercial Real Estate in the Baltimore Metropolitan Area*

**19 Ingleside Ave. Catonsville, MD 21228**

## MAP



**Jim Chivers**  
**Gold And Company, LLC**  
**5601 Newbury St.**  
**Baltimore, MD 21209**

**410.578.1300 (Office)**

**[www.goldcommercial.net](http://www.goldcommercial.net)**