



# **GOLD AND COMPANY, LLC**

**WWW.GOLDCOMMERCIAL.NET**

***Commercial Real Estate in the Baltimore Metropolitan Area***



**11425 Red Lion Rd. White Marsh, MD 21162**

## **Gold And Company, LLC**

**5601 Newbury St.  
Baltimore, MD 21209**

**Jim Chivers  
443.928.7522 cell  
jim@goldcommercial.net**

**Mitch Gold  
410.456.2492 cell  
mitch@goldcommercial.net**

**www.goldcommercial.net**

- **Baltimore County Contractors Property Available FOR SALE**
- **4,67 Acres Available**
- **Smaller Freestanding 2 Story Building and Drive-In Buildings**
- **ML Zoning—Baltimore County**
- **Fenced Lot w/ Fencing for Contractors Storage**
- **Near Pulaski Hwy and Allender Rd Intersection**
- **Combine with 11448 Pulaski for an additional 5.66 Acres**
- **Excellent Access to main Thoroughfares and Interstates**
- **Call for More Information**

This property offering is subject to change without notice. All information is deemed reliable but not guaranteed.



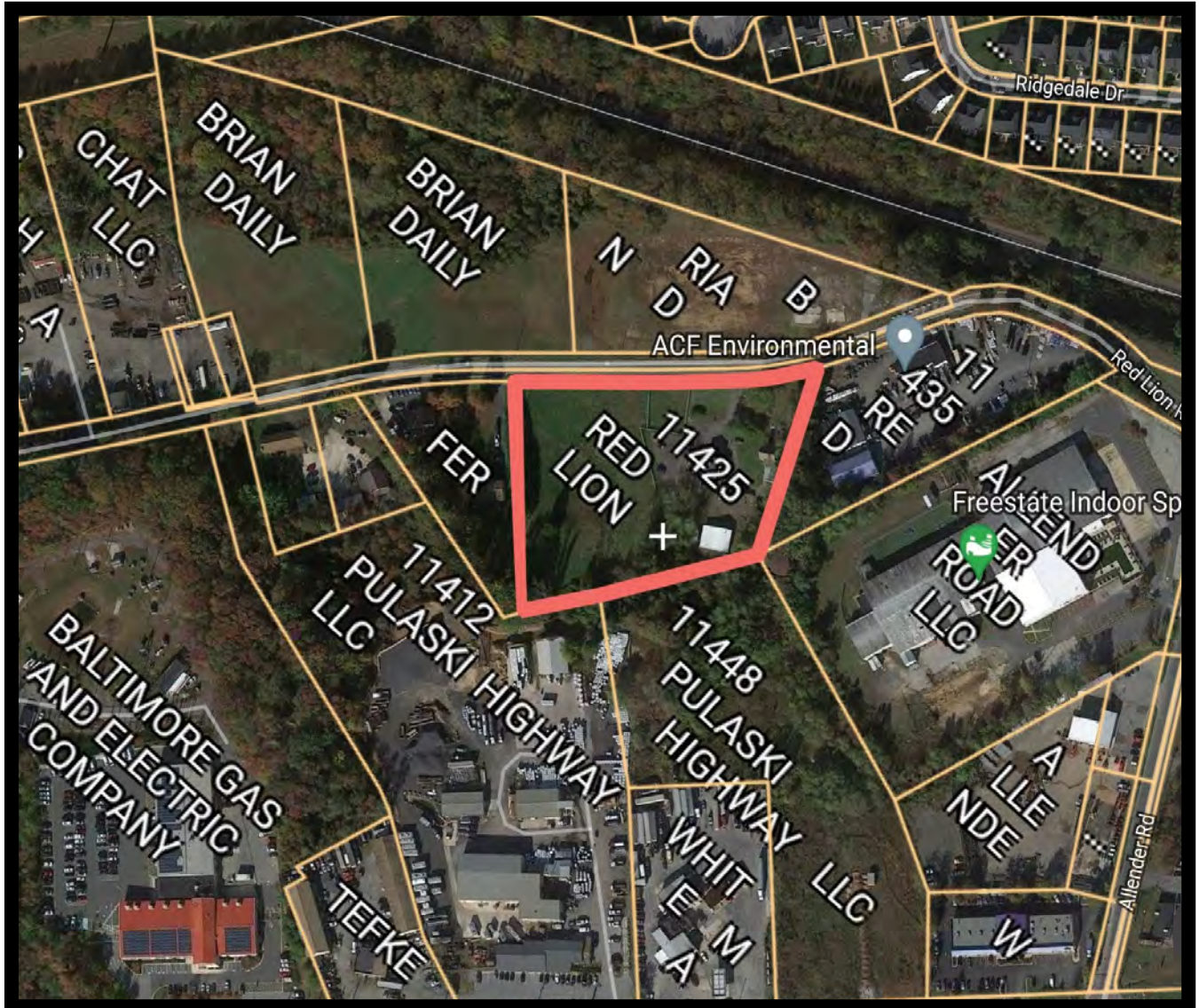


# Gold And Company

*Commercial Real Estate in the Baltimore Metropolitan Area*

## 11425 Red Lion Rd. White Marsh, MD

### Property Layout



**Jim Chivers / Mitch Gold**  
**Gold And Company, LLC**  
**5601 Newbury St.**  
**Baltimore, MD 21209**

**410.578.1300 (Office)**

**[www.goldcommercial.net](http://www.goldcommercial.net)**



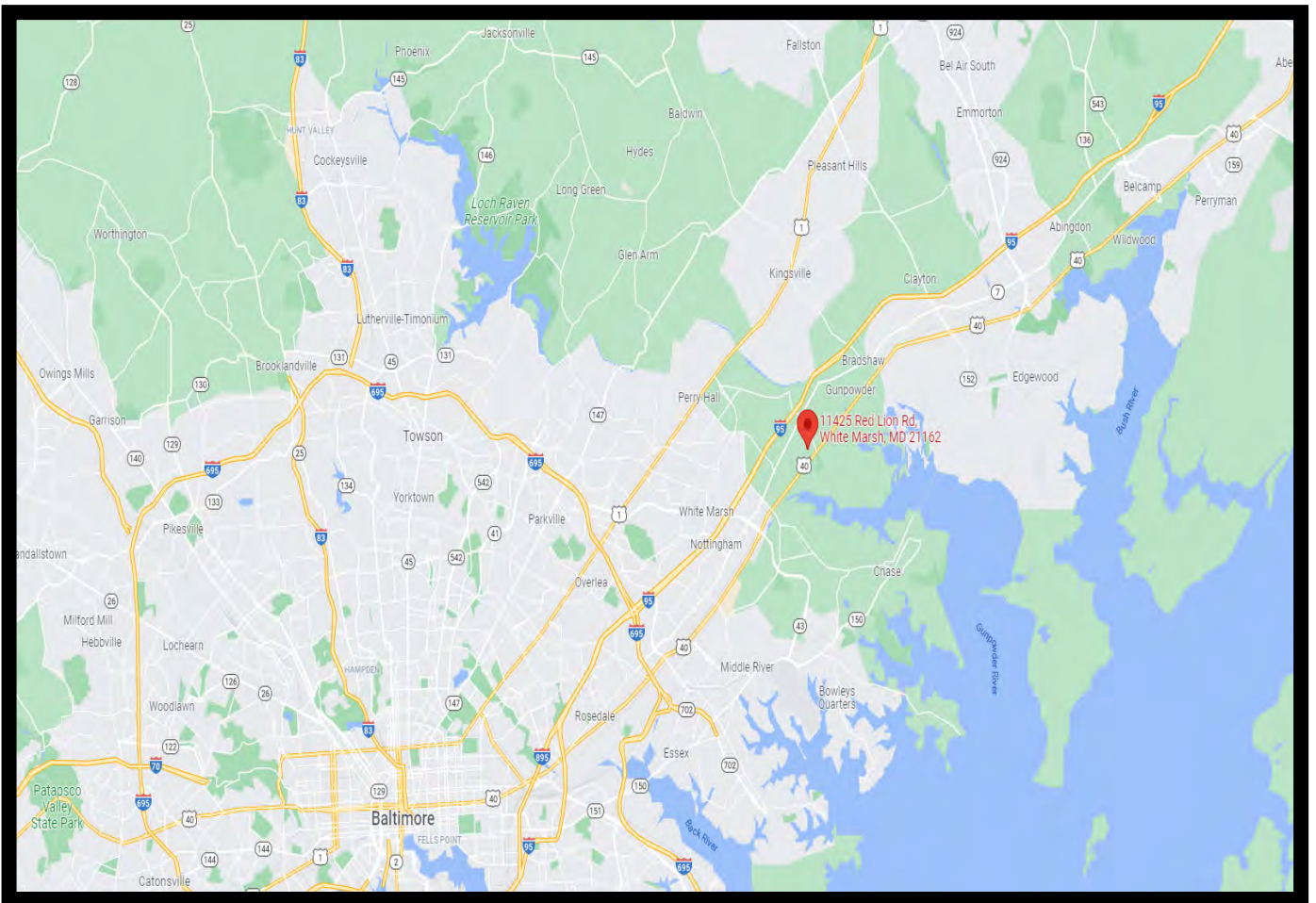


# Gold And Company

*Commercial Real Estate in the Baltimore Metropolitan Area*

**11425 Red Lion Rd. White Marsh, MD**

## MAP



**Jim Chivers / Mitch Gold**  
**Gold And Company, LLC**  
**5601 Newbury St.**  
**Baltimore, MD 21209**

**410.578.1300 (Office)**

**[www.goldcommercial.net](http://www.goldcommercial.net)**