



GOLD AND COMPANY, LLC

WWW.GOLDCOMMERCIAL.NET

Commercial Real Estate in the Baltimore Metropolitan Area



902 N Iris Avenue, Baltimore, MD 21225

Gold And Company, LLC

**5601 Newbury St.
Baltimore, MD 21209**

For More Information:

**Jim Chivers
Sr. Vice President
443.928.7522 cell
jim@goldcommercial.net**

**Will McCullough, SIOR
Vice President
410.292.2985 cell
will@goldcommercial.net**

www.goldcommercial.net

- **New Construction Warehouse FOR LEASE**
- **+/- 20,000 sf Industrial Building**
- **25' Clear Height**
- **45' x 50' Column Spacing**
- **Dock and Drive-in Loading**
- **Zoned I-2 (Heavy Industrial)**
- **Excellent Access I-95—East Baltimore City**
- **Proximity to Dundalk Marine Port**
- **Call For More Information**

This property offering is subject to change without notice. All information is deemed reliable but not guaranteed.



Gold And Company

Commercial Real Estate in the Baltimore Metropolitan Area

902 N Iris Avenue, Baltimore, MD 21225

Additional Aerials & Photos



Jim Chivers / Will McCullough
Gold And Company, LLC
5601 Newbury St.
Baltimore, MD 21209

410.578.1300 (Office)

www.goldcommercial.net

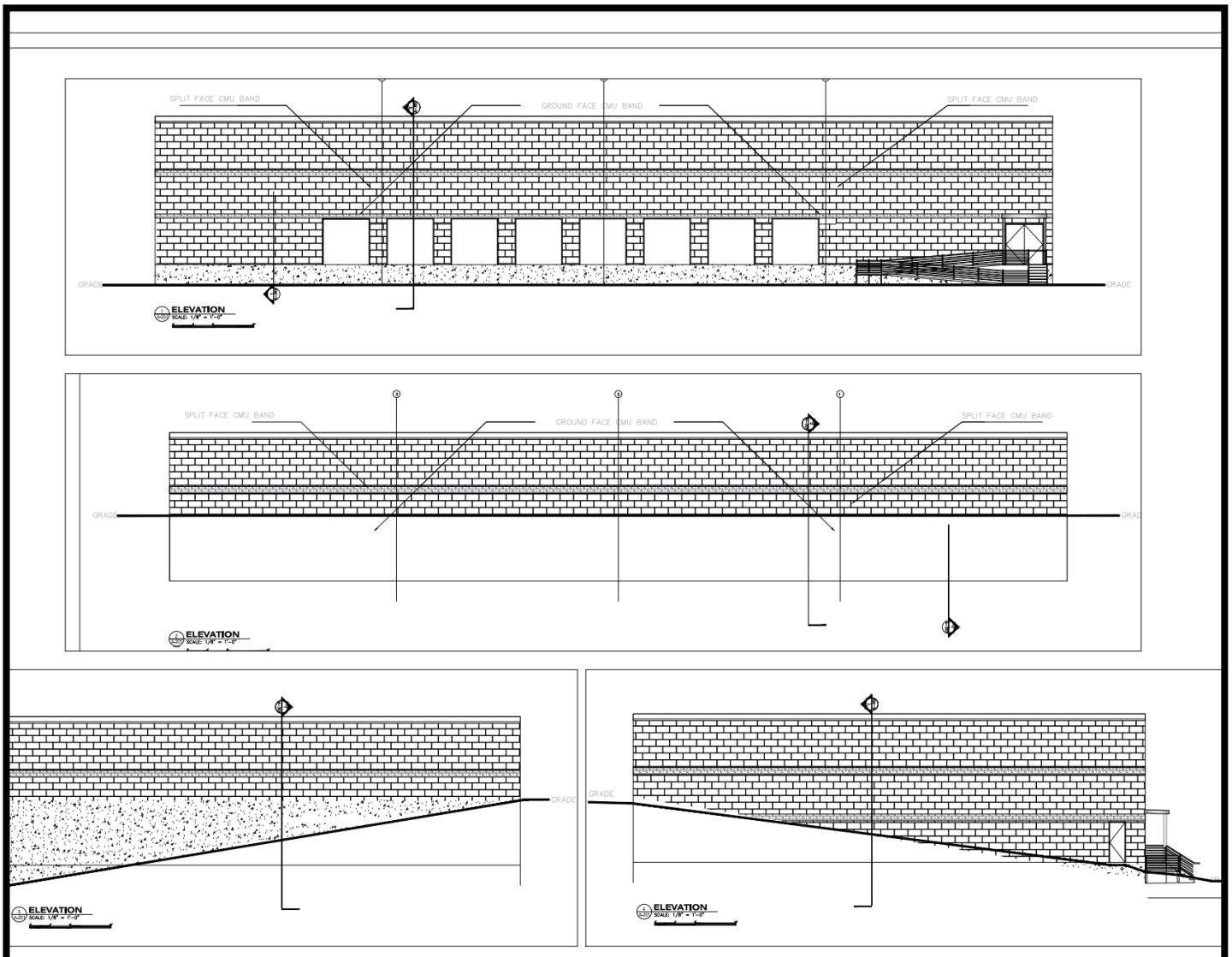


Gold And Company

Commercial Real Estate in the Baltimore Metropolitan Area

902 N Iris Avenue, Baltimore, MD 21225

Building Elevations



Jim Chivers / Will McCullough
Gold And Company, LLC
5601 Newbury St.
Baltimore, MD 21209

410.578.1300 (Office)

www.goldcommercial.net

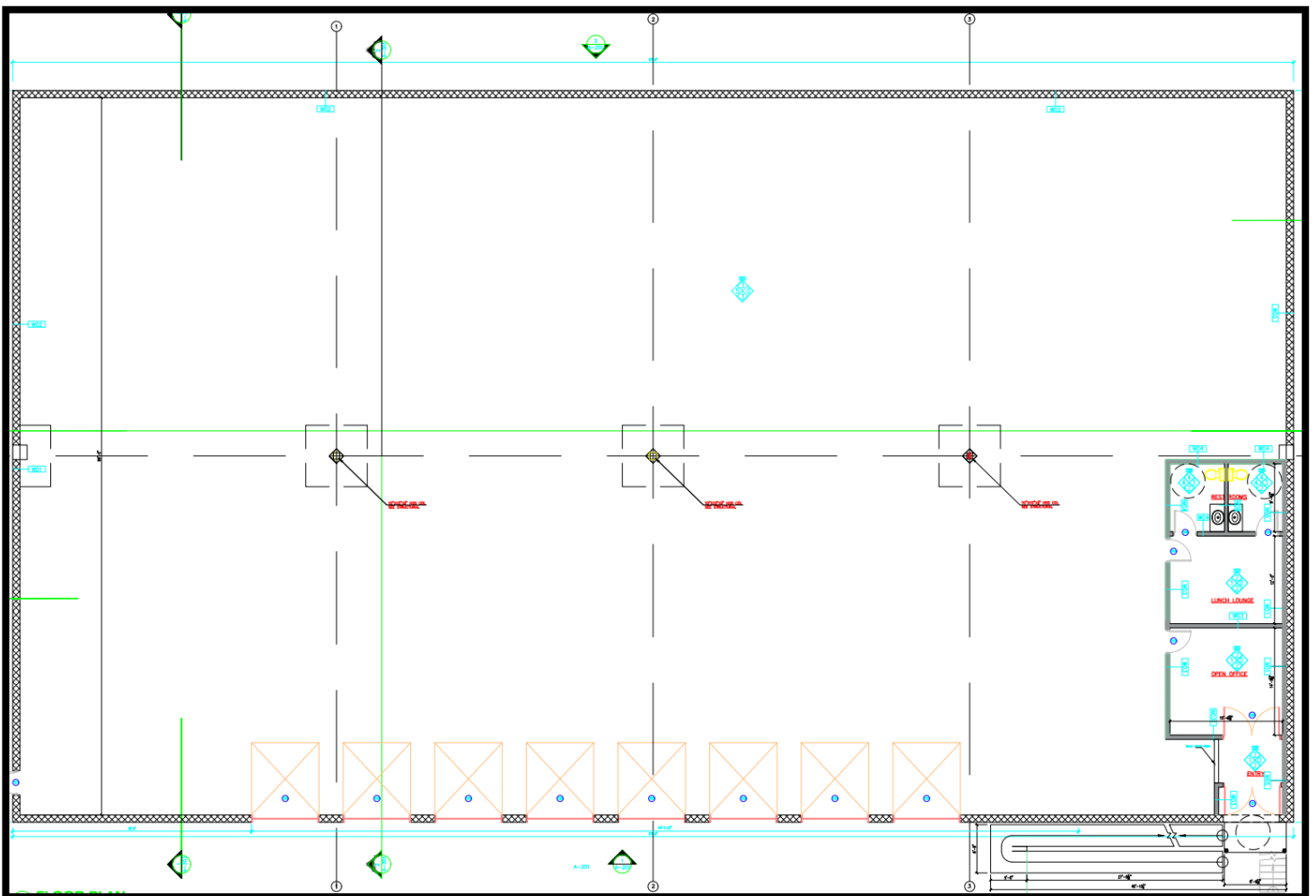


Gold And Company

Commercial Real Estate in the Baltimore Metropolitan Area

902 N Iris Avenue, Baltimore, MD 21225

Floor Plan



Jim Chivers / Will McCullough
Gold And Company, LLC
5601 Newbury St.
Baltimore, MD 21209

410.578.1300 (Office)

www.goldcommercial.net

