



GOLD AND COMPANY, LLC



Vision on Lombard – 301 West Lombard Street

Gold and Company, LLC

**5601 Newbury St.
Baltimore, MD 21209**

**Mitch Gold
410.456.2492
Mitch@goldcommercial.net**

**Alex Simone
443.845.4413
Alex@goldcommercial.net**

**Office: 410.578.1300
www.goldcommercial.net**

- **Premium Storefront Space by Oriole Park at Camden Yards**
- **3,960 sf +/- Commercial Kitchen, Restaurant and Bar**
- **Frontage on West Lombard St**
- **One Block from the University of Maryland Medical Center**
- **On-site Parking**
- **Ground Floor of Newly Renovated Apartments**



Gold and Company

Commercial Real Estate in the Baltimore Metropolitan Area

Vision on Lombard – 301 West Lombard Street



Mitch Gold / Alex Simone
Gold and Company, LLC
5601 Newbury St.
Baltimore, MD 21209

410.578.1300
www.goldcommercial.net



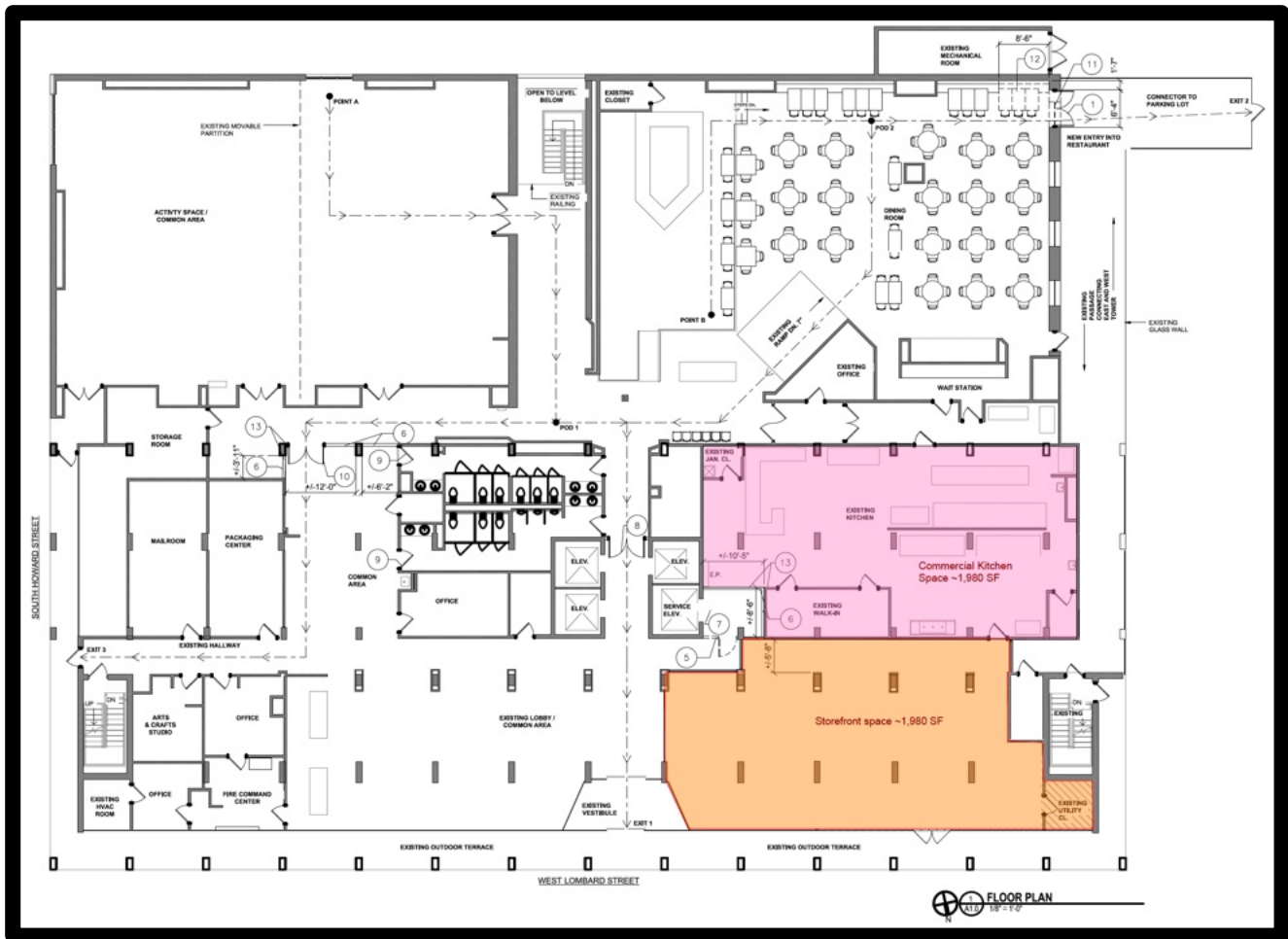
Est. 1999

Gold and Company

Commercial Real Estate in the Baltimore Metropolitan Area

Vision on Lombard – 301 West Lombard Street

Proposed New Floor Plan



Mitch Gold / Alex Simone
Gold and Company, LLC
5601 Newbury St.
Baltimore, MD 21209

410.578.1300
www.goldcommercial.net

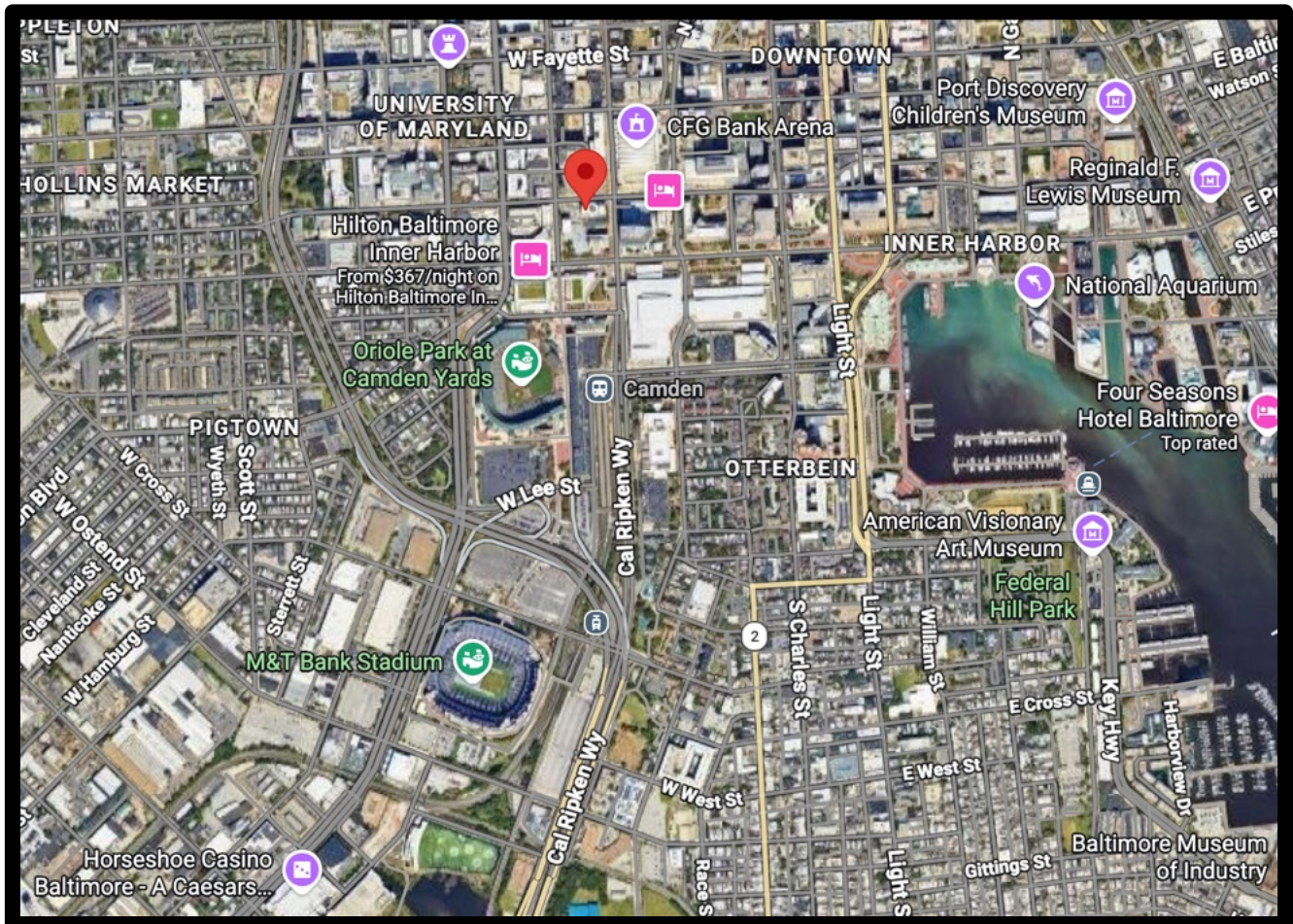


Est. 1999

Gold and Company

Commercial Real Estate in the Baltimore Metropolitan Area

301 West Lombard Street, Baltimore, MD 21201



Mitch Gold / Alex Simone
Gold and Company, LLC
5601 Newbury St.
Baltimore, MD 21209

410.578.1300
www.goldcommercial.net