



GOLD AND COMPANY, LLC

WWW.GOLDCOMMERCIAL.NET

Commercial Real Estate in the Baltimore Metropolitan Area



240 S. Kresson St. Baltimore, MD 21224

Gold And Company, LLC

**5601 Newbury St.
Baltimore, MD 21209**

**Jim Chivers
443.928.7522 cell
jim@goldcommercial.net**

**Mitch Gold
410.456.2492 cell
mitch@goldcommercial.net**

www.goldcommercial.net

- **Heavy Industrial Property Available FOR SALE**
- **+/- 8,000 sf New and Modern Fleet Maintenance Drive-Thru Building**
- **+/- 7,500 sf Cross Dock Warehouse**
- **2.19 Acres**
- **Fenced and Paved Lot**
- **I-2 Zoning—Heavy Industrial**
- **Located in a Qualified Enterprise, HUB, and Opportunity Zone**
- **East Baltimore Industrial Submarket**
- **Close to Dundalk Marine Port**
- **Excellent Access to main Thoroughfares and Interstates**
- **Call for More Information**

This property offering is subject to change without notice. All information is deemed reliable but not guaranteed.

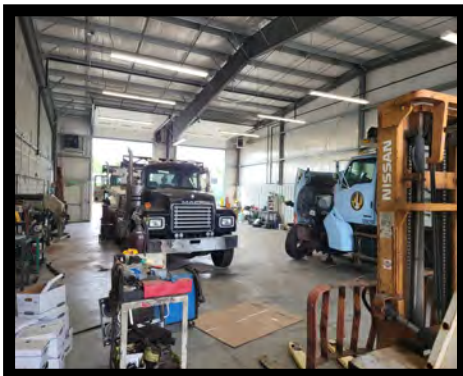


Gold And Company

Commercial Real Estate in the Baltimore Metropolitan Area

240 S. Kresson St. Baltimore, MD 21224

Additional Pictures



Jim Chivers / Mitch Gold
Gold And Company, LLC
5601 Newbury St.
Baltimore, MD 21209

410.578.1300 (Office)

www.goldcommercial.net

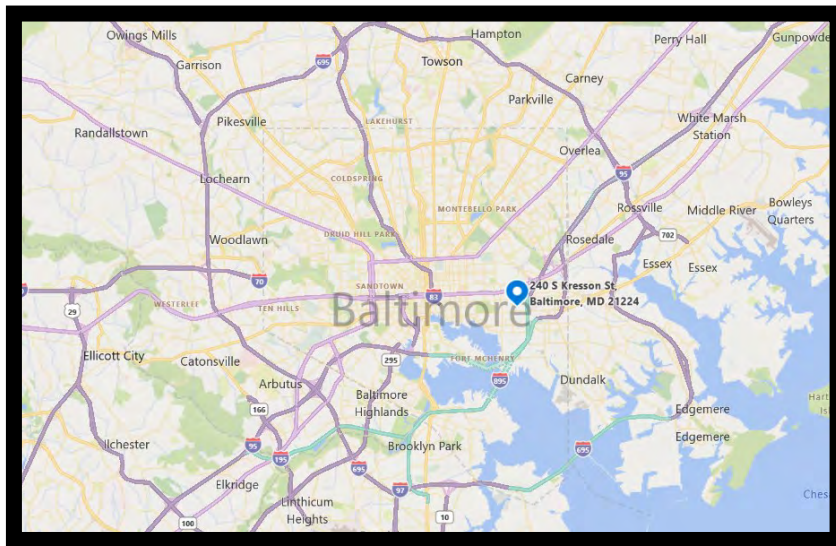
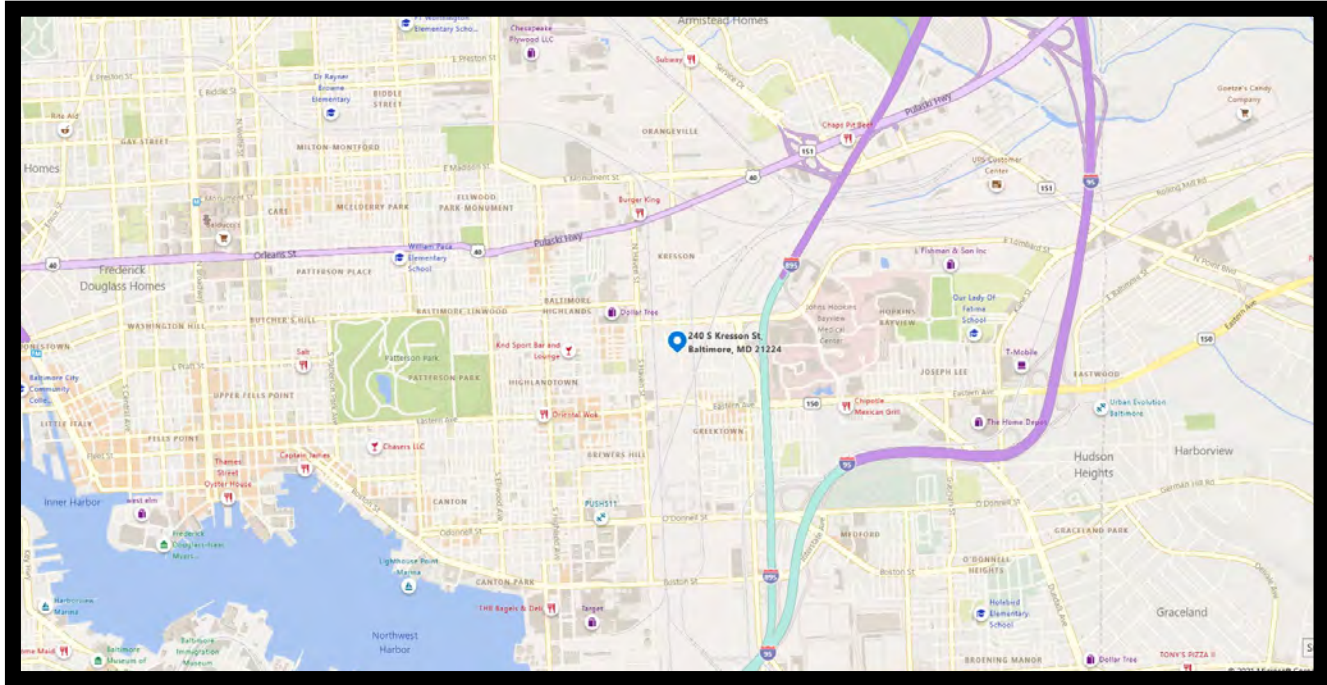


Gold And Company

Commercial Real Estate in the Baltimore Metropolitan Area

240 S. Kresson St. Baltimore, MD 21224

MAP



Jim Chivers / Mitch Gold
Gold And Company, LLC
5601 Newbury St.
Baltimore, MD 21209

410.578.1300 (Office)

www.goldcommercial.net