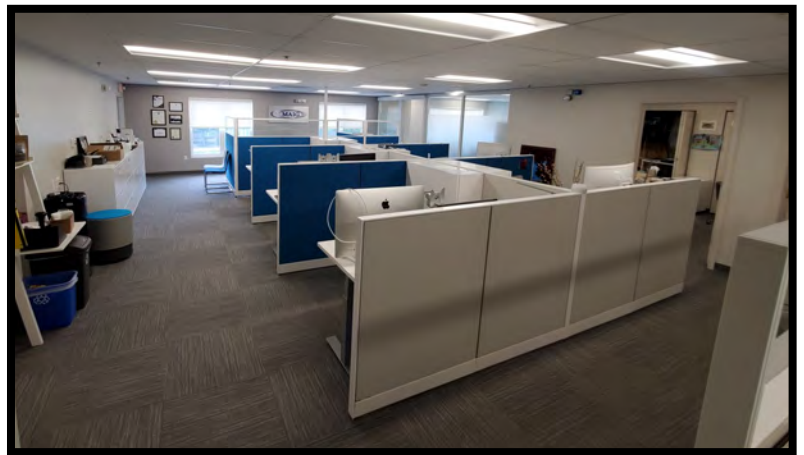
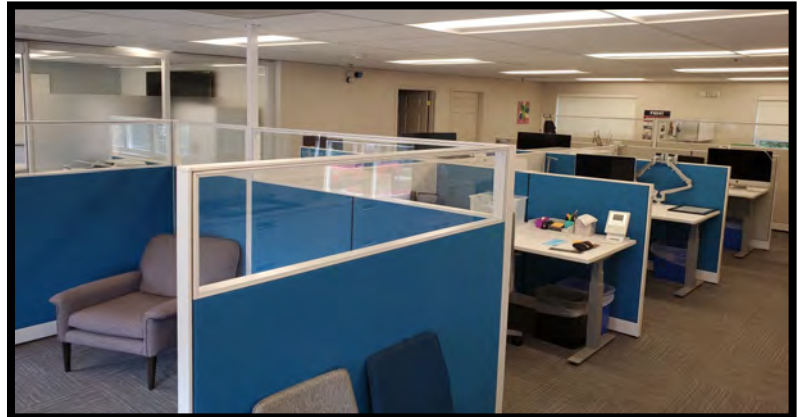




GOLD AND COMPANY, LLC

WWW.GOLDCOMMERCIAL.NET

Commercial Real Estate in the Baltimore Metropolitan Area



8174 Lark Brown Rd. Elkridge, MD 21075

Gold And Company, LLC

**5601 Newbury St.
Baltimore, MD 21209**

**Jim Chivers
443.928.7522 cell
jim@goldcommercial.net**

www.goldcommercial.net

- **Office Condo Available FOR SALE**
- **+/- 2,000 sf**
- **Unit 202**
- **Move-In Condition / Fully Built Out Office Space**
- **All New Mechanical Systems / HVAC**
- **Open Bullpen Layout w/ Executive Offices**
- **Conference Room and Kitchenette**
- **+/- 1 Mile from I-95 and many other Local Amenities**
- **Well Maintained Office / Condo Property**
- **Call For More Information**

This property offering is subject to change without notice. All information is deemed reliable but not guaranteed.

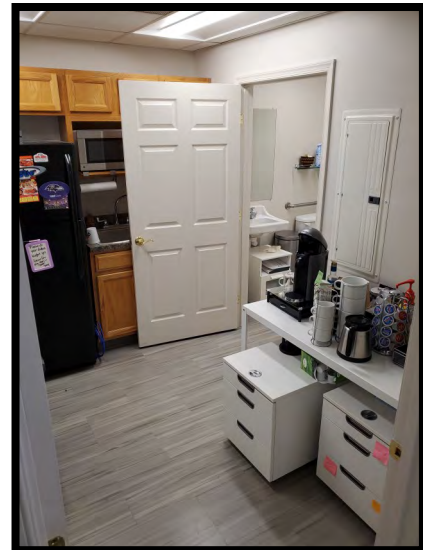
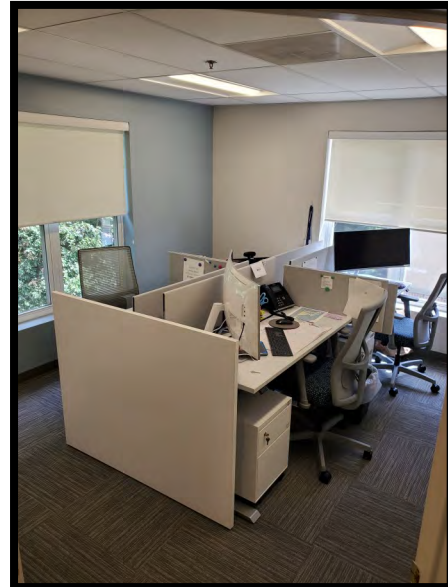
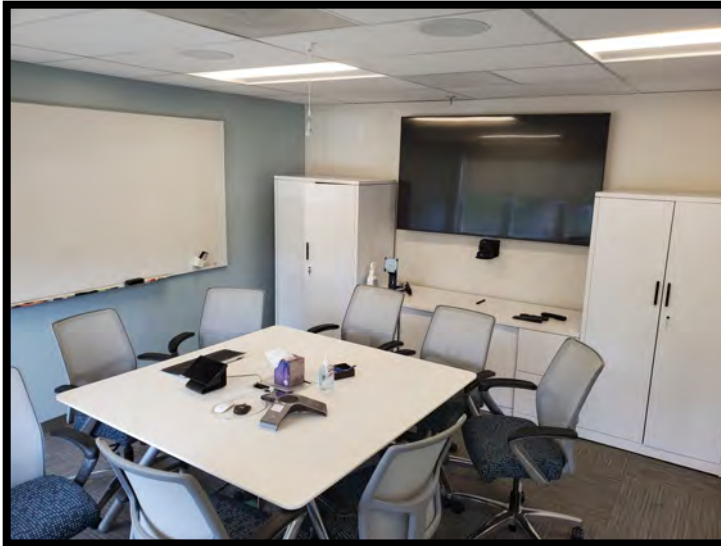


Gold And Company

Commercial Real Estate in the Baltimore Metropolitan Area

8174 Lark Brown Rd. Elkridge, MD

Additional Pictures



Jim Chivers
Gold And Company, LLC
5601 Newbury St.
Baltimore, MD 21209

410.578.1300 (Office)

www.goldcommercial.net



Gold And Company

Commercial Real Estate in the Baltimore Metropolitan Area

8174 Lark Brown Rd. Elkridge, MD 21075

Map Location



Jim Chivers / Alex Simone
Gold And Company, LLC
5601 Newbury St.
Baltimore, MD 21209

410.578.1300 (Office)

www.goldcommercial.net



Gold And Company

Commercial Real Estate in the Baltimore Metropolitan Area

8174 Lark Brown Rd. Elkridge, MD 21075

Birds Eye View



Jim Chivers
Gold And Company, LLC
5601 Newbury St.
Baltimore, MD 21209

410.578.1300 (Office)

www.goldcommercial.net